

Datasheet for ABIN184575
anti-SOCS1 antibody (C-Term)

11 Images

[Go to Product page](#)

Overview

Quantity:	100 µg
Target:	SOCS1
Binding Specificity:	C-Term
Reactivity:	Human, Mouse
Host:	Goat
Clonality:	Polyclonal
Conjugate:	This SOCS1 antibody is un-conjugated
Application:	ELISA, Immunohistochemistry (IHC), Immunofluorescence (IF), Flow Cytometry (FACS)

Product Details

Purpose:	SOCS1
Immunogen:	Peptide with sequence C-VLRDYLSSFPFQI, from the C Terminus of the protein sequence according to NP_003736.1.
Sequence:	VLRDYLSSFP FQI
Isotype:	IgG
Cross-Reactivity:	Cow, Dog, Human, Mouse, Pig, Rat
Purification:	Purified from goat serum by ammonium sulphate precipitation followed by antigen affinity chromatography using the immunizing peptide.
Grade:	Verified

Target Details

Target:	SOCS1
Alternative Name:	SOCS1 (SOCS1 Products)
Background:	SOCS1, JAB, CIS1, SSI1, TIP3, CISH1, Cish1, SSI-1, SOCS-1, suppressor of cytokine signaling 1, JAK binding protein, Tec-interacting protein 3, STAT induced SH3 protein 1, cytokine-inducible SH2 protein 1
Gene ID:	8651, 12703
NCBI Accession:	NP_003736
Pathways:	JAK-STAT Signaling , Interferon-gamma Pathway , TLR Signaling , Response to Growth Hormone Stimulus

Application Details

Application Notes:	Immunohistochemistry: Paraffin embedded Human Kidney. Recommended concentration: 8 µg/mL. Paraffin embedded Mouse Kidney. Recommended concentration: 5-10 µg/mL. Peptide ELISA: antibody detection limit dilution 1:4000.
Comment:	Immunofluorescence: Expression of the protein seen in the cytoplasm and nucleus of MCF7 cells. Recommended concentration: 10µg/ml. Flow Cytometry: Flow cytometric analysis of HEK293 cells. Recommended concentration: 1
Restrictions:	For Research Use only

Handling

Format:	Liquid
Concentration:	0.5 mg/mL
Buffer:	Supplied at 0.5 mg/mL in Tris saline, 0.02 % sodium azide, pH 7.3 with 0.5 % bovine serum albumin.
Preservative:	Sodium azide
Precaution of Use:	This product contains Sodium azide: a POISONOUS AND HAZARDOUS SUBSTANCE which should be handled by trained staff only.
Handling Advice:	Minimize freezing and thawing.
Storage:	-20 °C
Storage Comment:	Aliquot and store at -20°C, with minimal freeze/thawing. A working aliquot may be refrigerated

at 4°C for a few weeks and still remain viable.

Images

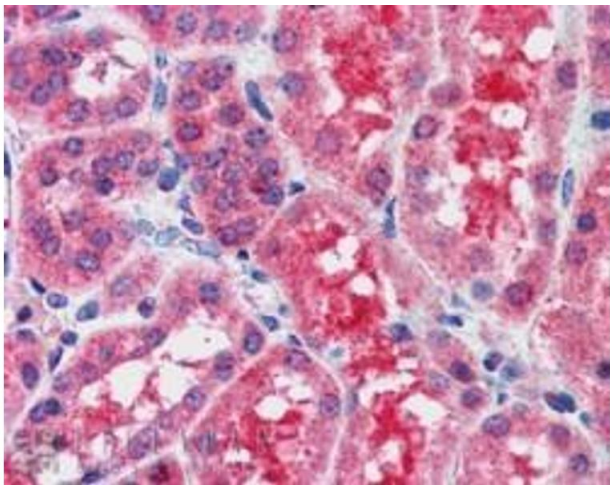
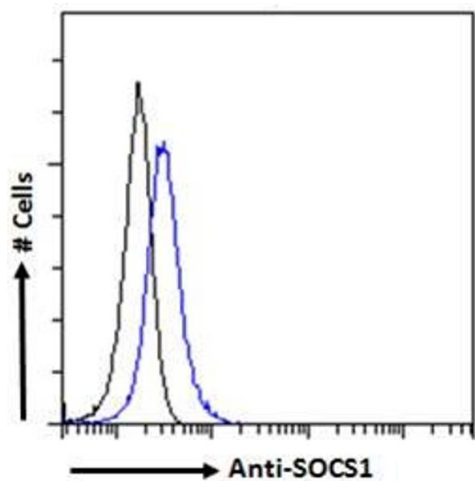


Image 1. ABIN184575 (2.5 µg/mL) staining of paraffin embedded Human Kidney. Steamed antigen retrieval with citrate buffer pH 6, AP-staining.



Western Blotting

Image 2. ABIN184575 (0.3µg/ml) staining of Human Splen (A), Pig Pancreas (B), (1ug/ml) Mouse Spleen (C) lysate and negative control HeLa (D) cell lysate (35µg protein in RIPA buffer). Detected by chemiluminescence.



Flow Cytometry

Image 3. ABIN184575 Flow cytometric analysis of paraformaldehyde fixed HEK293 cells (blue line), permeabilized with 0.5% Triton. Primary incubation 1hr (10ug/ml) followed by Alexa Fluor 488 secondary antibody (1ug/ml). IgG control: Unimmunized goat IgG (black line) f

Please check the [product details page](#) for more images. Overall 11 images are available for ABIN184575.