

Datasheet for ABIN184577  
**anti-ZCCHC11 antibody (C-Term)**

## 2 Images

[Go to Product page](#)

## Overview

Quantity:	100 µg
Target:	ZCCHC11
Binding Specificity:	C-Term
Reactivity:	Human
Host:	Goat
Clonality:	Polyclonal
Conjugate:	This ZCCHC11 antibody is un-conjugated
Application:	ELISA, Immunohistochemistry (IHC), Immunofluorescence (IF)

## Product Details

Purpose:	ZCCHC11 / PAPD3
Immunogen:	RERCPHPPRGNVSE
Sequence:	RERCPHPPRG NVSE
Isotype:	IgG
Specificity:	This antibody is expected to recognize all 3 reported isoforms (as represented by NP_001009881.1, NP_056084.1, NP_001009882.1)
Cross-Reactivity:	Cow, Dog, Human, Mouse, Rat
Purification:	Purified from goat serum by ammonium sulphate precipitation followed by antigen affinity chromatography using the immunizing peptide.
Grade:	Verified

## Target Details

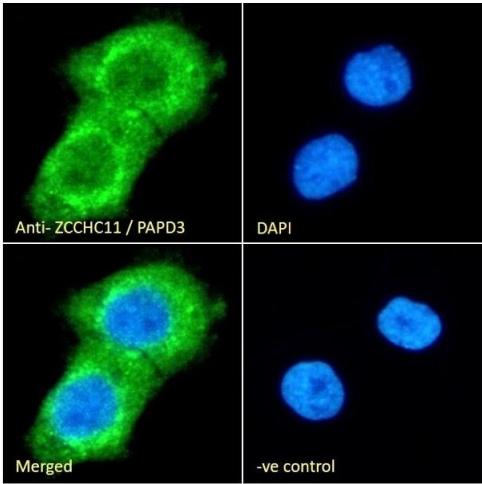
Target:	ZCCHC11
Alternative Name:	TUT4 ( <a href="#">ZCCHC11 Products</a> )
Background:	ZCCHC11, KIAA0191, zinc finger, CCHC domain containing 11, PAPD3, PAP associated domain containing 3
Gene ID:	23318
NCBI Accession:	<a href="#">NP_001009881</a> , <a href="#">NP_056084</a> , <a href="#">NP_001009882</a>
Pathways:	<a href="#">Stem Cell Maintenance</a>

## Application Details

Application Notes:	Immunohistochemistry: In paraffin embedded Human Lymph Node shows nuclear staining of select lymphocytes and staining of macrophages. Recommended concentration: 2-6 µg/mL. Peptide ELISA: antibody detection limit dilution 1:16000.
Comment:	<b>Immunofluorescence:</b> Strong expression of the protein seen in the cytoplasm of A431 cells. Recommended concentration: 10µg/ml.
Restrictions:	For Research Use only

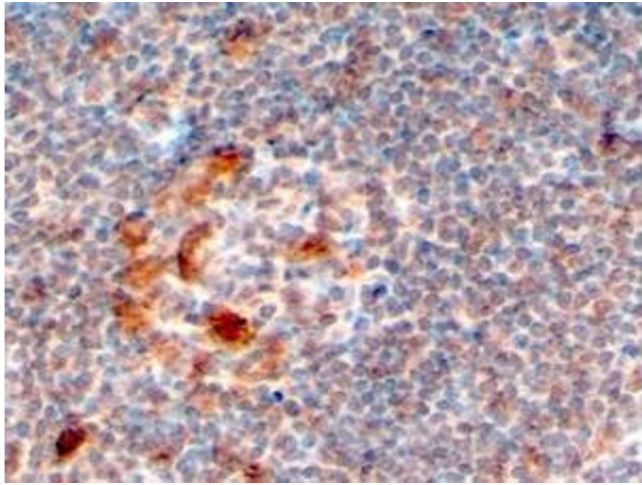
## Handling

Format:	Liquid
Concentration:	0.5 mg/mL
Buffer:	Supplied at 0.5 mg/mL in Tris saline, 0.02 % sodium azide, pH 7.3 with 0.5 % bovine serum albumin.
Preservative:	Sodium azide
Precaution of Use:	This product contains Sodium azide: a POISONOUS AND HAZARDOUS SUBSTANCE which should be handled by trained staff only.
Handling Advice:	Minimize freezing and thawing.
Storage:	-20 °C
Storage Comment:	Aliquot and store at -20°C, with minimal freeze/thawing. A working aliquot may be refrigerated at 4°C for a few weeks and still remain viable.



#### Immunofluorescence

**Image 1.** (ABIN184577) Immunofluorescence analysis of paraformaldehyde fixed A431 cells, permeabilized with 0.15 % Triton. Primary incubation 1hr (10 µg/mL) followed by Alexa Fluor 488 secondary antibody (2 µg/mL), showing cytoplasmic staining. The nuclear stain is DAPI (b



#### Immunohistochemistry

**Image 2.** ABIN184577 (4µg/ml) staining of paraffin embedded Human Lymph Node. Steamed antigen retrieval with citrate buffer pH 6, HRP-staining.