

Datasheet for ABIN184579  
**anti-SORL1 antibody (C-Term)**

3 Images

1 Publication

[Go to Product page](#)

## Overview

Quantity:	100 µg
Target:	SORL1
Binding Specificity:	C-Term
Reactivity:	Human
Host:	Goat
Clonality:	Polyclonal
Conjugate:	This SORL1 antibody is un-conjugated
Application:	ELISA, Immunofluorescence (IF)

## Product Details

Purpose:	SORL1 / LR11 (C Terminus)
Immunogen:	Peptide with sequence C-TGFSDDVPMVIA, from the C Terminus of the protein sequence according to NP_003096.1.
Sequence:	TGFSDDVPMV IA
Isotype:	IgG
Cross-Reactivity:	Cow, Dog, Human, Mouse, Rat
Purification:	Purified from goat serum by ammonium sulphate precipitation followed by antigen affinity chromatography using the immunizing peptide.
Grade:	Verified

## Target Details

Target:	SORL1
Alternative Name:	SORL1 ( <a href="#">SORL1 Products</a> )
Background:	SORL1, LR11, sortilin-related receptor, L(DLR class) A repeats-containing, LRP9, SORLA, gp250, SorLA-1, mosaic protein LR11, C11orf32, FLJ21930, FLJ39258, sortilin-related receptor containing LDLR class A repeats
Gene ID:	6653
NCBI Accession:	<a href="#">NP_003096</a>
Pathways:	<a href="#">Smooth Muscle Cell Migration</a>

## Application Details

Application Notes:	Peptide ELISA: antibody detection limit dilution 1:32000.
Comment:	<b>Immunofluorescence:</b> Strong expression of the protein seen in A431 and HepG2 cells. Recommended concentration: 10µg/ml.
Restrictions:	For Research Use only

## Handling

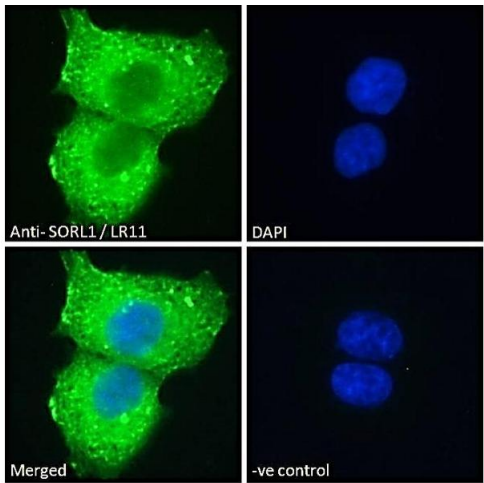
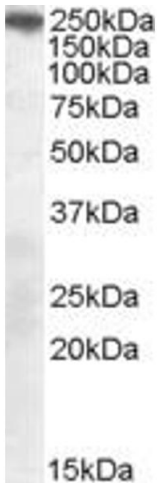
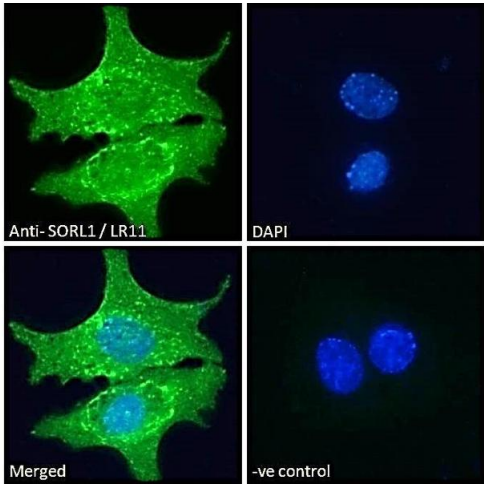
Format:	Liquid
Concentration:	0.5 mg/mL
Buffer:	Supplied at 0.5 mg/mL in Tris saline, 0.02 % sodium azide, pH 7.3 with 0.5 % bovine serum albumin.
Preservative:	Sodium azide
Precaution of Use:	This product contains Sodium azide: a POISONOUS AND HAZARDOUS SUBSTANCE which should be handled by trained staff only.
Handling Advice:	Minimize freezing and thawing.
Storage:	-20 °C
Storage Comment:	Aliquot and store at -20°C, with minimal freeze/thawing. A working aliquot may be refrigerated at 4°C for a few weeks and still remain viable.

## Publications

Product cited in:	Kim, Lee, Lee, Kim, Song, Huh, Lee, Kim, Kim, Hong, Shim, Chang: "Implication of mouse
-------------------	--

Vps26b-Vps29-Vps35 retromer complex in sortilin trafficking." in: **Biochemical and biophysical research communications**, Vol. 403, Issue 2, pp. 167-71, (2010) ([PubMed](#)).

Images



Immunofluorescence

**Image 1.** ABIN184579 Immunofluorescence analysis of paraformaldehyde fixed HepG2 cells, permeabilized with 0.15% Triton. Primary incubation 1hr (10ug/ml) followed by Alexa Fluor 488 secondary antibody (2ug/ml), showing cytoplasmic/endosome, membrane and nuclear staining. The nuclear stain is DAPI (blue). Negative control: Unimmunized goat IgG (10ug/ml) followed by Alexa Fluor 488 secondary antibody (2ug/ml).

**Image 2.** ABIN184579 (0.3µg/ml) staining of Mouse Brain lysate (35µg protein in RIPA buffer). Primary incubation was 1 hour. Detected by chemiluminescence.

Immunofluorescence

**Image 3.** ABIN184579 Immunofluorescence analysis of paraformaldehyde fixed A431 cells, permeabilized with 0.15% Triton. Primary incubation 1hr (10ug/ml) followed by Alexa Fluor 488 secondary antibody (2ug/ml), showing cytoplasmic with endosome staining. The nuclear stain is DAPI (blue). Negative control: Unimmunized goat IgG (10ug/ml) followed by Alexa Fluor 488 secondary antibody (2ug/ml).