

Datasheet for ABIN184581

anti-ALDH1A1 antibody (C-Term)

5 Images

2 Publications

[Go to Product page](#)

Overview

Quantity:	100 µg
Target:	ALDH1A1
Binding Specificity:	C-Term
Reactivity:	Human, Mouse, Rat
Host:	Goat
Clonality:	Polyclonal
Conjugate:	This ALDH1A1 antibody is un-conjugated
Application:	Western Blotting (WB), ELISA, Immunofluorescence (IF)

Product Details

Purpose:	ALDH1A1 (C Terminus)
Immunogen:	C-EVKTVTVKISQKNS
Sequence:	EVKTVTVKIS QKNS
Isotype:	IgG
Specificity:	This antibody may cross-react with ALDH1A2 (GeneID 8854) with one residue difference from this design and with ALDH2 (GeneID 217) with two residues difference from this design.
Cross-Reactivity:	Human, Mouse, Rat
Purification:	Purified from goat serum by ammonium sulphate precipitation followed by antigen affinity chromatography using the immunizing peptide.
Grade:	Verified

Target Details

Target:	ALDH1A1
Alternative Name:	ALDH1A1 (ALDH1A1 Products)
Background:	ALDH1A1, aldehyde dehydrogenase 1 family, member A1, ALDC, ALDH-E1, ALDH1, ALDH11, MGC2318, PUMB1, RALDH1, ALDH class 1, acetaldehyde dehydrogenase 1, aldehyde dehydrogenase 1, soluble, aldehyde dehydrogenase 1A1, aldehyde dehydrogenase, liver cytosolic
Gene ID:	216, 11668, 24188
NCBI Accession:	NP_000680
Pathways:	Dopaminergic Neurogenesis

Application Details

Application Notes:	Western Blot: Approx 55 kDa band observed in Human, Mouse and Rat Liver lysates (calculated MW of 54.9 kDa according to NP_000680.2). Recommended concentration: 0.1-0.3 µg/mL. Primary incubation was 1 hour. Peptide ELISA: antibody detection limit dilution 1:1000.
Comment:	Immunofluorescence: Strong expression of the protein seen in the cytoplasm of HepG2 cells. Recommended concentration: 10µg/ml. This antibody has been successfully used in IF on Human, PMID: 32157826.
Restrictions:	For Research Use only

Handling

Format:	Liquid
Concentration:	0.5 mg/mL
Buffer:	Supplied at 0.5 mg/mL in Tris saline, 0.02 % sodium azide, pH 7.3 with 0.5 % bovine serum albumin.
Preservative:	Sodium azide
Precaution of Use:	This product contains Sodium azide: a POISONOUS AND HAZARDOUS SUBSTANCE which should be handled by trained staff only.
Handling Advice:	Minimize freezing and thawing.
Storage:	-20 °C

Handling

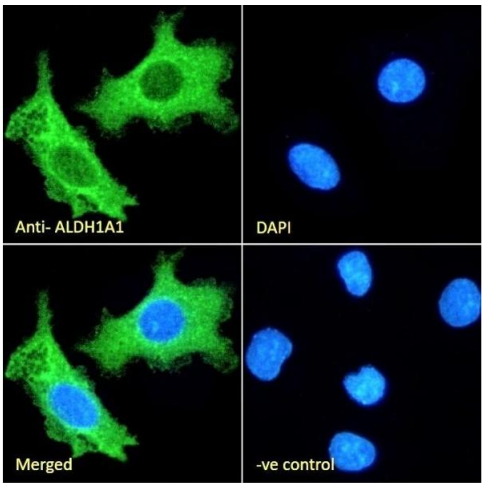
Storage Comment: Aliquot and store at -20°C, with minimal freeze/thawing. A working aliquot may be refrigerated at 4°C for a few weeks and still remain viable.

Publications

Product cited in: Etienne, Joanne, Catelain, Riveron, Bayer, Lafable, Punzon, Blot, Agbulut, Vilquin: "Aldehyde dehydrogenases contribute to skeletal muscle homeostasis in healthy, aging, and Duchenne muscular dystrophy patients." in: **Journal of cachexia, sarcopenia and muscle**, Vol. 11, Issue 4, pp. 1047-1069, (2020) ([PubMed](#)).

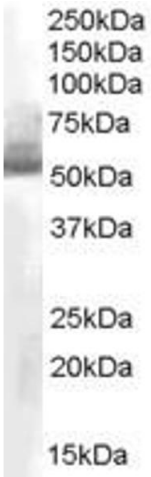
Amann, Hofmann, Freudenberger, Holland-Cunz, Eichmüller, Bazhin: "Expression and activity of alcohol and aldehyde dehydrogenases in melanoma cells and in melanocytes." in: **Journal of cellular biochemistry**, Vol. 113, Issue 3, pp. 792-9, (2012) ([PubMed](#)).

Images



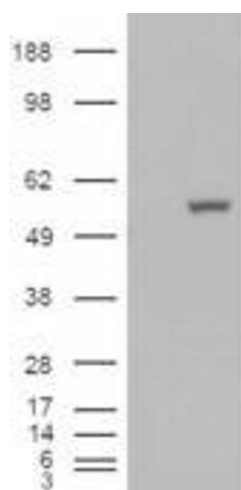
Immunofluorescence

Image 1. (ABIN184581) Immunofluorescence analysis of paraformaldehyde fixed HepG2 cells, permeabilized with 0.15 % Triton. Primary incubation 1hr (10 µg/mL) followed by Alexa Fluor 488 secondary antibody (2 µg/mL), showing cytoplasmic staining. The nuclear stain is DAPI (blue). Negative control: Unimmunized goat IgG (10 µg/mL) followed by Alexa Fluor 488 secondary antibody (2 µg/mL).



Western Blotting

Image 2. ABIN184581 staining (0.03µg/ml) of human liver lysate (RIPA buffer, 35µg total protein per lane). Primary incubated for 1 hour. Detected by western blot using chemiluminescence.



Western Blotting

Image 3. HEK293 overexpressing ALDH1A1 (ABIN5493687) and probed with ABIN184581 (mock transfection in first lane).

Please check the [product details page](#) for more images. Overall 5 images are available for ABIN184581.