

Datasheet for ABIN184583
anti-NCF1 antibody (C-Term)



[Go to Product page](#)

5 Images

Overview

| | |
|----------------------|--|
| Quantity: | 100 µg |
| Target: | NCF1 |
| Binding Specificity: | C-Term |
| Reactivity: | Human, Mouse, Pig |
| Host: | Goat |
| Clonality: | Polyclonal |
| Conjugate: | This NCF1 antibody is un-conjugated |
| Application: | Western Blotting (WB), ELISA, Immunohistochemistry (IHC), Immunofluorescence (IF), Flow Cytometry (FACS) |

Product Details

| | |
|-------------------|---|
| Purpose: | NCF1 / p47phox |
| Immunogen: | Peptide with sequence C-SESTKRKLASAV, from the C Terminus of the protein sequence according to NP_000256.3. |
| Sequence: | SESTKRKLAS AV |
| Isotype: | IgG |
| Cross-Reactivity: | Cow, Human, Mouse, Pig, Rat |
| Purification: | Purified from goat serum by ammonium sulphate precipitation followed by antigen affinity chromatography using the immunizing peptide. |
| Grade: | Verified |

Target Details

| | |
|-------------------|---|
| Target: | NCF1 |
| Alternative Name: | NCF1 (NCF1 Products) |
| Background: | NCF1, p47phox, FLJ79451, NCF1A, NOXO2, SH3PXD1A, neutrophil cytosolic factor 1, Neutrophil cytosolic factor-1 (47kD), neutrophil cytosolic factor 1 (47kD, chronic granulomatous disease, autosomal 1), NADPH oxidase organizer 2 |
| Gene ID: | 653361, 17969, 114553 |
| NCBI Accession: | NP_000256 |
| Pathways: | PI3K-Akt Signaling |

Application Details

| | |
|--------------------|---|
| Application Notes: | Immunohistochemistry: Paraffin embedded Human Colon, Neutrophils. Recommended concentration: 5 µg/mL. Western Blot: Approx 48 kDa band observed in lysates of cell lines Daudi, U251 and U937 and in Mouse Thymus, and approx, 50 kDa in Pig Spleen lysates (calculated MW of 44.7 kDa according to Human NP_000256.4, 46.0 kDa according to Mouse NP_001272966.1 and 45 Peptide ELISA: antibody detection limit dilution 1:20000. |
| Comment: | Immunofluorescence: Strong expression of the protein seen in the cytoplasm of HeLa cells. Recommended concentration: 10µg/ml. Flow Cytometry: Flow cytometric analysis of HeLa cells. Recommended concentration: 10ug/ml.< |
| Restrictions: | For Research Use only |

Handling

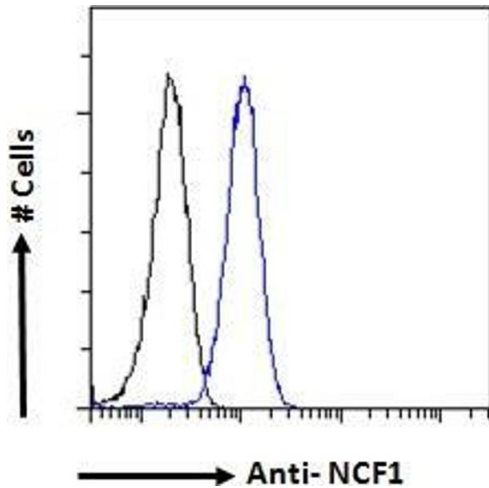
| | |
|--------------------|--|
| Format: | Liquid |
| Concentration: | 0.5 mg/mL |
| Buffer: | Supplied at 0.5 mg/mL in Tris saline, 0.02 % sodium azide, pH 7.3 with 0.5 % bovine serum albumin. |
| Preservative: | Sodium azide |
| Precaution of Use: | This product contains Sodium azide: a POISONOUS AND HAZARDOUS SUBSTANCE which should be handled by trained staff only. |
| Handling Advice: | Minimize freezing and thawing. |

Handling

Storage: -20 °C

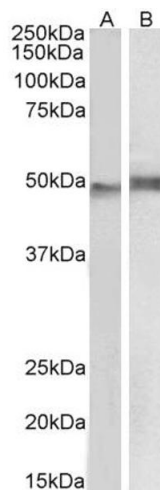
Storage Comment: Aliquot and store at -20°C, with minimal freeze/thawing. A working aliquot may be refrigerated at 4°C for a few weeks and still remain viable.

Images



Flow Cytometry

Image 1. ABIN184583 Flow cytometric analysis of paraformaldehyde fixed HeLa cells (blue line), permeabilized with 0.5% Triton. Primary incubation 1hr (10ug/ml) followed by Alexa Fluor 488 secondary antibody (1ug/ml). IgG control: Unimmunized goat IgG (black line) followed by Alexa Fluor 488 secondary antibody.



Western Blotting

Image 2. ABIN184583 (1µg/ml) staining of Mouse Thymus (A) and Pig Spleen (B) lysate (35µg protein in RIPA buffer). Detected by chemiluminescence.



Western Blotting

Image 3. ABIN184583 staining (0.2µg/ml) of U937 lysate (RIPA buffer, 30µg total protein per lane). Primary incubated for 1 hour. Detected by western blot using chemiluminescence.

Please check the [product details page](#) for more images. Overall 5 images are available for ABIN184583.