

Datasheet for ABIN184586
anti-MAX antibody (C-Term)[Go to Product page](#)

4 Images

Overview

Quantity:	100 µg
Target:	MAX
Binding Specificity:	C-Term
Reactivity:	Human
Host:	Goat
Clonality:	Polyclonal
Conjugate:	This MAX antibody is un-conjugated
Application:	Western Blotting (WB), ELISA, Immunohistochemistry (IHC), Immunofluorescence (IF)

Product Details

Purpose:	MAX
Immunogen:	Peptide with sequence C-EEPQSRKKLRMEAS, from the C Terminus of the protein sequence according to NP_002373.3, NP_660087.1.
Sequence:	EEPQSRKKLR MEAS
Isotype:	IgG
Specificity:	This antibody is expected to recognize both reported isoforms (NP_002373.3, NP_660087.1).
Cross-Reactivity:	Cow, Dog, Human, Mouse, Rat
Purification:	Purified from goat serum by ammonium sulphate precipitation followed by antigen affinity chromatography using the immunizing peptide.
Grade:	Verified

Target Details

Target:	MAX
Alternative Name:	MAX (MAX Products)
Background:	MAX, MAX protein, MGC10775, MGC11225, MGC18164, MGC34679, MGC36767, myc-associated factor X, helix-loop-helix zipper protein, MYC associated factor X, bHLHd4, bHLHd5, bHLHd6, bHLHd7, bHLHd8, orf1
Gene ID:	4149, 17187
NCBI Accession:	NP_002373 , NP_660087
Pathways:	Mitotic G1-G1/S Phases

Application Details

Application Notes:	Immunohistochemistry: Paraffin embedded Human Prostate. Recommended concentration: 10 µg/mL. Western Blot: Approx 22 kDa band observed in lysates of cell line Jurkat (calculated MW of 18.3 kDa according to NP_002373.3). Recommended concentration: 0.01-0.03 µg/mL. Primary incubation 1 hour at room temperature. Peptide ELISA: antibody detection limit dilution 1:32000.
Comment:	Immunofluorescence: Expression of the protein seen in the cytoplasm and nuclei of A431 and U251 cells. Recommended concentration: 10µg/ml. Additional validation: This antibody has been successfully used in the followin
Restrictions:	For Research Use only

Handling

Format:	Liquid
Concentration:	0.5 mg/mL
Buffer:	Supplied at 0.5 mg/mL in Tris saline, 0.02 % sodium azide, pH 7.3 with 0.5 % bovine serum albumin.
Preservative:	Sodium azide
Precaution of Use:	This product contains Sodium azide: a POISONOUS AND HAZARDOUS SUBSTANCE which should be handled by trained staff only.
Handling Advice:	Minimize freezing and thawing.

Handling

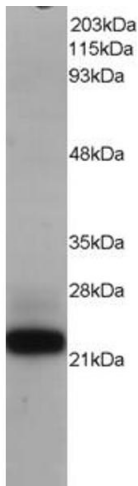
Storage:	-20 °C
Storage Comment:	Aliquot and store at -20°C, with minimal freeze/thawing. A working aliquot may be refrigerated at 4°C for a few weeks and still remain viable.

Images



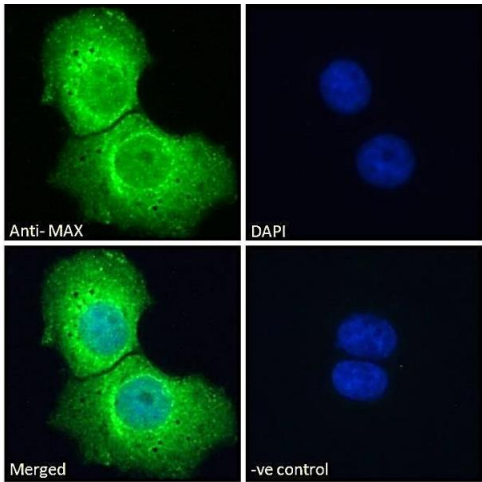
Western Blotting

Image 1. ABIN184586 (0.01µg/ml) staining of Jurkat lysate (35µg protein in RIPA buffer). Detected by chemiluminescence.



Western Blotting

Image 2. ABIN184586 staining (0.1µg/ml) of Jurkat lysate (RIPA buffer, 1.4E+05 cells per lane). Primary incubated for 12 hour. Detected by western blot using chemiluminescence.



Immunofluorescence

Image 3. ABIN184586 Immunofluorescence analysis of paraformaldehyde fixed A431 cells, permeabilized with 0.15% Triton. Primary incubation 1hr (10ug/ml) followed by Alexa Fluor 488 secondary antibody (2ug/ml), showing cytoplasmic and nuclear staining. The nuclear stain is DAPI (blue). Negative control: Unimmunized goat IgG (10ug/ml) followed by Alexa Fluor 488 secondary antibody (2ug/ml).

Please check the [product details page](#) for more images. Overall 4 images are available for ABIN184586.