

Datasheet for ABIN1845879  
**anti-PPY antibody (AA 1-95)**



[Go to Product page](#)

4 Images

## Overview

|                      |   |
|----------------------|---|
| Quantity:            | 100 µL  |
| Target:              | PPY   |
| Binding Specificity: | AA 1-95   |
| Reactivity:          | Human   |
| Host:                | Mouse   |
| Clonality:           | Monoclonal  |
| Conjugate:           | This PPY antibody is un-conjugated                  |
| Application:         | Western Blotting (WB), ELISA, Flow Cytometry (FACS) |

## Product Details

|               |   |
|---------------|---|
| Immunogen:    | Purified recombinant fragment of human PPY (AA: 1-95) expressed in E. Coli. |
| Isotype:      | IgG1  |
| Purification: | Purified antibody   |

## Target Details

|                   |  |
|-------------------|--|
| Target:           | PPY  |
| Alternative Name: | PPY ( <a href="#">PPY Products</a> )   |
| Background:       | This gene belongs to the NPY family and it encodes a protein that is synthesized as a 95 aa polypeptide precursor in the pancreatic islets of Langerhans. It is cleaved into two peptide products, the active hormone of 36 aa and an icosapeptide of unknown function. The hormone acts as a regulator of pancreatic and gastrointestinal functions and may be important in the |

## Target Details

regulation of food intake.

Molecular Weight: 10.4 kDa

Gene ID: 5539

UniProt: [P01298](#)

Pathways: [Feeding Behaviour](#)

## Application Details

Application Notes: Optimal working dilution should be determined by the investigator.

Restrictions: For Research Use only

## Handling

Format: Liquid

Concentration: 1.0 mg/mL

Buffer: PBS with 0.05 % sodium azide and 0.5 % protein stabilizer.

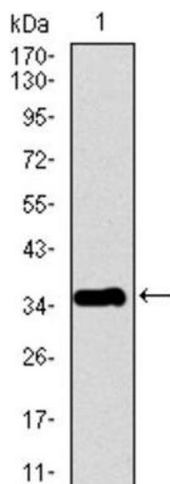
Preservative: Sodium azide

Precaution of Use: This product contains Sodium azide: a POISONOUS AND HAZARDOUS SUBSTANCE which should be handled by trained staff only.

Storage: -20 °C

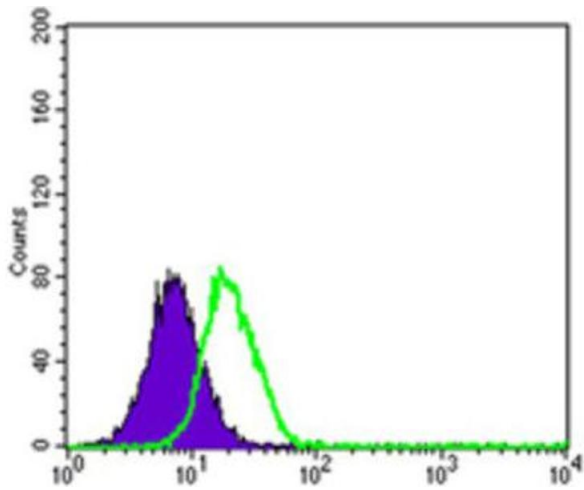
Storage Comment: Aliquot and store at -20 °C. Avoid repeated freeze/thaw cycles.

## Images



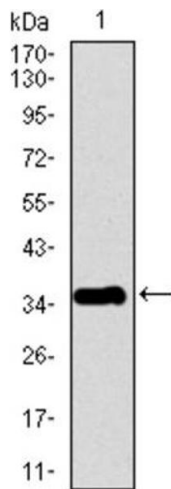
### Western Blotting

Image 1.



### Flow Cytometry

Image 2.



### Western Blotting

Image 3. Western blot analysis using PPY antibody against human PPY recombinant protein. (Expected MW is 35.9 kDa).

Please check the [product details page](#) for more images. Overall 4 images are available for ABIN1845879.