

Datasheet for ABIN184589
anti-ORC6 antibody (C-Term)

2 Images

[Go to Product page](#)

Overview

Quantity:	100 µg
Target:	ORC6
Binding Specificity:	C-Term
Reactivity:	Human
Host:	Goat
Clonality:	Polyclonal
Conjugate:	This ORC6 antibody is un-conjugated
Application:	Western Blotting (WB)

Product Details

Purpose:	ORC6L
Immunogen:	Peptide with sequence C-ENAASAQKATAE, from the C Terminus of the protein sequence according to NP_055136.1.
Sequence:	ENAASAQKAT AE
Isotype:	IgG
Cross-Reactivity:	Human
Purification:	Purified from goat serum by ammonium sulphate precipitation followed by antigen affinity chromatography using the immunizing peptide.
Grade:	Verified

Target Details

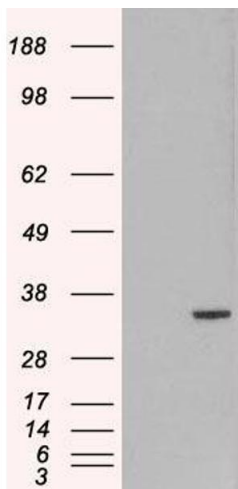
Target:	ORC6
Alternative Name:	ORC6L (ORC6 Products)
Background:	ORC6L, origin recognition complex, subunit 6 homolog-like (yeast), ORC6, origin recognition complex subunit 6, origin recognition complex, subunit 6-like (yeast), origin recognition complex, subunit 6 (yeast homolog)-like
Gene ID:	23594
NCBI Accession:	NP_055136
Pathways:	Mitotic G1-G1/S Phases , DNA Replication , M Phase , Synthesis of DNA

Application Details

Application Notes:	Western Blot: In transfected HEK293 transiently expressing ORC6L a band of approx. 33 kDa is observed. This band is not observed in the non-transfected HEK293. The calculated molecular size is 28.1 kDa according to NP_055136.1. Recommended concentration, 1
Restrictions:	For Research Use only

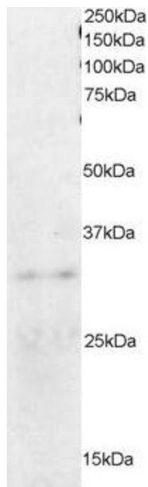
Handling

Format:	Liquid
Concentration:	0.5 mg/mL
Buffer:	Supplied at 0.5 mg/mL in Tris saline, 0.02 % sodium azide, pH 7.3 with 0.5 % bovine serum albumin.
Preservative:	Sodium azide
Precaution of Use:	This product contains Sodium azide: a POISONOUS AND HAZARDOUS SUBSTANCE which should be handled by trained staff only.
Handling Advice:	Minimize freezing and thawing.
Storage:	-20 °C
Storage Comment:	Aliquot and store at -20°C, with minimal freeze/thawing. A working aliquot may be refrigerated at 4°C for a few weeks and still remain viable.



Western Blotting

Image 1. HEK293 overexpressing ORC6L (ABIN5453564) and probed with (mock transfection in first lane).



Western Blotting

Image 2. ABIN184589 staining (0.2µg/ml) of HeLa lysate (RIPA buffer, 35µg total protein per lane). Primary incubated for 1 hour. Detected by western blot using chemiluminescence.