

Datasheet for ABIN184602
anti-B-Cell Linker antibody (C-Term)

4 Images

[Go to Product page](#)

Overview

Quantity:	100 µg
Target:	B-Cell Linker (BLNK)
Binding Specificity:	C-Term
Reactivity:	Human
Host:	Goat
Clonality:	Polyclonal
Conjugate:	This B-Cell Linker antibody is un-conjugated
Application:	Western Blotting (WB), ELISA, Flow Cytometry (FACS), Immunofluorescence (IF)

Product Details

Purpose:	BLNK / SLP-65
Immunogen:	Peptide with sequence C-KDSTRLKYAVKVS, from the C Terminus of the protein sequence according to NP_037446.1, NP_001107566.1.
Sequence:	KDSTRLKYAV KVS
Isotype:	IgG
Specificity:	This antibody is expected to recognize all reported isoforms.
Cross-Reactivity:	Cow, Dog, Human, Mouse, Pig, Rat
Purification:	Purified from goat serum by ammonium sulphate precipitation followed by antigen affinity chromatography using the immunizing peptide.
Grade:	Verified

Target Details

Target:	B-Cell Linker (BLNK)
Alternative Name:	BLNK (BLNK Products)
Background:	BLNK, SLP-65, B-cell linker, BASH, BLNK-s, Ly57, MGC111051, SLP65, B cell linker protein, B-cell adapter containing a SH2 domain protein, B-cell adapter containing a Src homology 2 domain protein, OTTHUMP00000020167, Src homology 2 domain-containing leuko
Gene ID:	29760, 17060
NCBI Accession:	NP_037446 , NP_001107566 , NP_001245369 , NP_001245370 , NP_001245371
Pathways:	BCR Signaling

Application Details

Application Notes:	Western Blot: Approx 70-75 kDa band observed in lysates of cell line Daudi (calculated MW of 50.5 kDa according to NP_037446.1). This molecular weight is routinely observed by other sources. Recommended concentration 0.3-1 µg/mL. Primary incubation 1 hour a Peptide ELISA: antibody detection limit dilution 1:32000.
Comment:	Immunofluorescence: Strong expression of the protein seen in the membranes of HepG2 cells. Recommended concentration: 10µg/ml. Flow Cytometry: Flow cytometric analysis of Daudi cells. Recommended concentration: 10ug/ml
Restrictions:	For Research Use only

Handling

Format:	Liquid
Concentration:	0.5 mg/mL
Buffer:	Supplied at 0.5 mg/mL in Tris saline, 0.02 % sodium azide, pH 7.3 with 0.5 % bovine serum albumin.
Preservative:	Sodium azide
Precaution of Use:	This product contains Sodium azide: a POISONOUS AND HAZARDOUS SUBSTANCE which should be handled by trained staff only.
Handling Advice:	Minimize freezing and thawing.
Storage:	-20 °C

Handling

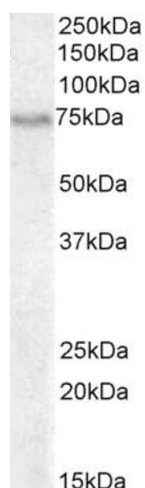
Storage Comment: Aliquot and store at -20°C, with minimal freeze/thawing. A working aliquot may be refrigerated at 4°C for a few weeks and still remain viable.

Images



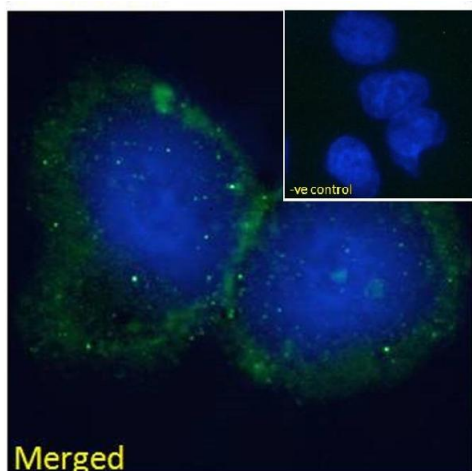
Western Blotting

Image 1. ABIN184602 staining (4µg/ml) of Daudi lysate (RIPA buffer, 30µg total protein per lane). Primary incubated for 1 hour. Detected by western blot using chemiluminescence.



Western Blotting

Image 2. ABIN184602 (0.3µg/ml) staining of Daudi cell lysate (35µg protein in RIPA buffer). Detected by chemiluminescence.



Immunofluorescence

Image 3. ABIN184602 Immunofluorescence analysis of paraformaldehyde fixed HepG2 cells, permeabilized with 0.15% Triton. Primary incubation 1hr (10ug/ml) followed by Alexa Fluor 488 secondary antibody (2ug/ml), showing some membrane staining. The nuclear stain is DAPI (blue). Negative control: Unimmunized goat IgG (10ug/ml) followed by Alexa Fluor 488 secondary antibody (2ug/ml).

Please check the [product details page](#) for more images. Overall 4 images are available for ABIN184602.