

Datasheet for ABIN1846090
anti-SQSTM1 antibody (AA 232-356)

6 Images

[Go to Product page](#)

Overview

Quantity:	100 µL
Target:	SQSTM1
Binding Specificity:	AA 232-356
Reactivity:	Human
Host:	Mouse
Clonality:	Monoclonal
Conjugate:	This SQSTM1 antibody is un-conjugated
Application:	Western Blotting (WB), Immunohistochemistry (IHC), ELISA, Flow Cytometry (FACS)

Product Details

Immunogen:	Purified recombinant fragment of human SQSTM1 (AA: 232-356) expressed in E. coli.
Isotype:	IgG1
Purification:	Purified antibody

Target Details

Target:	SQSTM1
Alternative Name:	SQSTM1 (SQSTM1 Products)
Background:	This gene encodes a multifunctional protein that binds ubiquitin and regulates activation of the nuclear factor kappa-B (NF-κB) signaling pathway. The protein functions as a scaffolding/adaptor protein in concert with TNF receptor-associated factor 6 to mediate activation of NF-κB in response to upstream signals. Alternatively spliced transcript variants

Target Details

encoding either the same or different isoforms have been identified for this gene. Mutations in this gene result in sporadic and familial Paget disease of bone.

Molecular Weight: 47.7 kDa

Pathways: [NF-kappaB Signaling](#), [Neurotrophin Signaling Pathway](#), [Autophagy](#)

Application Details

Application Notes: Optimal working dilution should be determined by the investigator.

Restrictions: For Research Use only

Handling

Format: Liquid

Concentration: 1.0 mg/mL

Buffer: PBS with 0.05 % sodium azide and 0.5 % protein stabilizer.

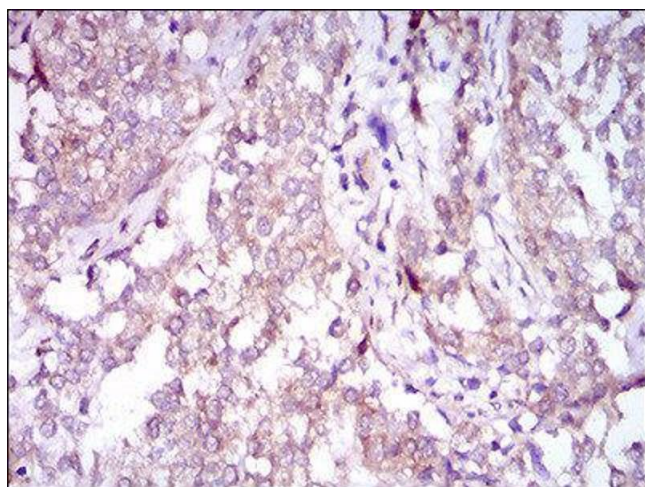
Preservative: Sodium azide

Precaution of Use: This product contains Sodium azide: a POISONOUS AND HAZARDOUS SUBSTANCE which should be handled by trained staff only.

Storage: -20 °C

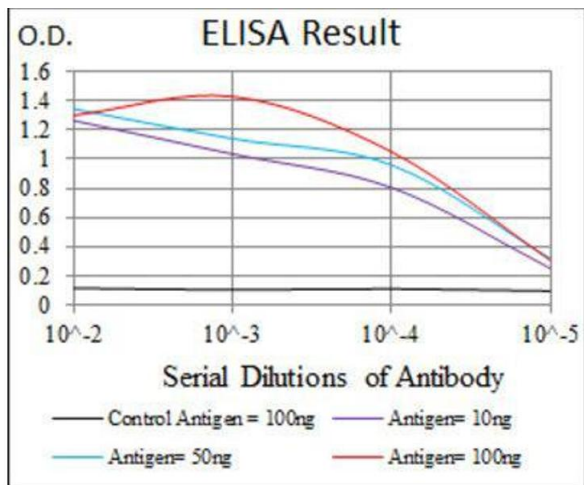
Storage Comment: Aliquot and store at -20 °C. Avoid repeated freeze/thaw cycles.

Images



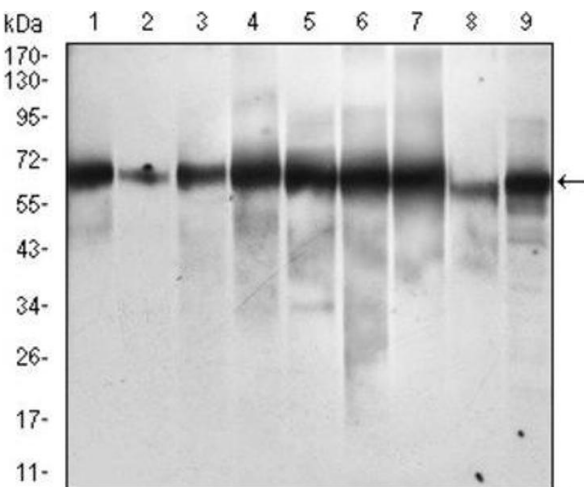
Immunohistochemistry

Image 1.



ELISA

Image 2.



Western Blotting

Image 3.

Please check the [product details page](#) for more images. Overall 6 images are available for ABIN1846090.