

Datasheet for ABIN184610

anti-STAP2 antibody (C-Term)

5 Images

4 Publications

[Go to Product page](#)

Overview

Quantity:	100 µg
Target:	STAP2
Binding Specificity:	C-Term
Reactivity:	Human
Host:	Goat
Clonality:	Polyclonal
Conjugate:	This STAP2 antibody is un-conjugated
Application:	Western Blotting (WB), ELISA

Product Details

Purpose:	STAP2 / BKS
Immunogen:	Peptide with sequence C-ELQKKLEKRRALEH, from the C Terminus of the protein sequence according to NP_060190.2, NP_001013863.1.
Sequence:	ELQKKLEKRR ALEH
Isotype:	IgG
Specificity:	This antibody is expected to recognise isoforms 1 (NP_060190.2) and isoform 2 (NP_001013863.1).
Cross-Reactivity:	Human
Purification:	Purified from goat serum by ammonium sulphate precipitation followed by antigen affinity chromatography using the immunizing peptide.

Product Details

Grade: Verified

Target Details

Target:	STAP2
Alternative Name:	STAP2 (STAP2 Products)
Background:	STAP2, BKS, STAP-2, FLJ20234, breast tumor kinase substrate, brk kinase substrate, signal-transducing adaptor protein-2, signal transducing adaptor family member 2
Gene ID:	55620
NCBI Accession:	NP_060190 , NP_001013863

Application Details

Application Notes:	Western Blot: Approx 48 kDa band observed in Human Heart lysates and 45 kDa band observed in Human Breast Lysates (calculated MW of 49.6 kDa according to NP_060190 and of NP_001013863.1). Recommended concentration: 0.5-1.5 µg/mL. Peptide ELISA: antibody detection limit dilution 1:128000.
Restrictions:	For Research Use only

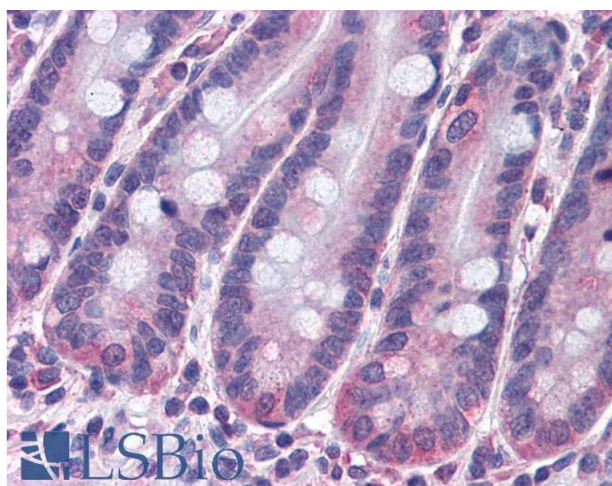
Handling

Format:	Liquid
Concentration:	0.5 mg/mL
Buffer:	Supplied at 0.5 mg/mL in Tris saline, 0.02 % sodium azide, pH 7.3 with 0.5 % bovine serum albumin.
Preservative:	Sodium azide
Precaution of Use:	This product contains Sodium azide: a POISONOUS AND HAZARDOUS SUBSTANCE which should be handled by trained staff only.
Handling Advice:	Minimize freezing and thawing.
Storage:	-20 °C
Storage Comment:	Aliquot and store at -20°C, with minimal freeze/thawing. A working aliquot may be refrigerated at 4°C for a few weeks and still remain viable.

Publications

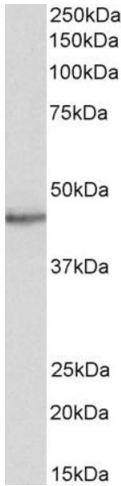
- Product cited in: Ikeda, Mizushima, Sekine, Yamamoto, Muromoto, Nanbo, Oritani, Yoshimura, Matsuda: "Involvement of STAP-2 in Brk-mediated phosphorylation and activation of STAT5 in breast cancer cells." in: **Cancer science**, Vol. 102, Issue 4, pp. 756-61, (2011) ([PubMed](#)).
- Ikeda, Sekine, Mizushima, Nakasuji, Miyasaka, Yamamoto, Muromoto, Nanbo, Oritani, Yoshimura, Matsuda: "Interactions of STAP-2 with Brk and STAT3 participate in cell growth of human breast cancer cells." in: **The Journal of biological chemistry**, Vol. 285, Issue 49, pp. 38093-103, (2010) ([PubMed](#)).
- Ikeda, Miyasaka, Sekine, Mizushima, Muromoto, Nanbo, Yoshimura, Matsuda: "STAP-2 is phosphorylated at tyrosine-250 by Brk and modulates Brk-mediated STAT3 activation." in: **Biochemical and biophysical research communications**, Vol. 384, Issue 1, pp. 71-5, (2009) ([PubMed](#)).
- Sekine, Ikeda, Tsuji, Yamamoto, Muromoto, Nanbo, Oritani, Yoshimura, Matsuda: "Signal-transducing adaptor protein-2 regulates stromal cell-derived factor-1 alpha-induced chemotaxis in T cells." in: **Journal of immunology (Baltimore, Md. : 1950)**, Vol. 183, Issue 12, pp. 7966-74, (2009) ([PubMed](#)).

Images



Immunohistochemistry

Image 1. ABIN184610 (3.75µg/ml) staining of paraffin embedded Human Small Intestine. Steamed antigen retrieval with citrate buffer pH 6, AP-staining. This data is from a previous batch, not on sale.



Western Blotting

Image 2. ABIN184610 (0.5µg/ml) staining of Human Heart lysate (35µg protein in RIPA buffer). Primary incubation was 1 hour. Detected by chemiluminescence.

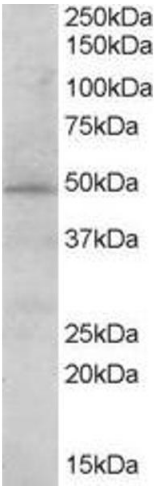


Image 3. ABIN184610 (0.03µg/ml) staining of human heart lysate (35µg protein in RIPA buffer). Primary incubation was 1 hour. Detected by chemiluminescence.

Please check the [product details page](#) for more images. Overall 5 images are available for ABIN184610.