

Datasheet for ABIN1846111
anti-KEAP1 antibody (AA 380-624)



[Go to Product page](#)

7 Images

Overview

Quantity:	100 µL
Target:	KEAP1
Binding Specificity:	AA 380-624
Reactivity:	Human
Host:	Mouse
Clonality:	Monoclonal
Conjugate:	This KEAP1 antibody is un-conjugated
Application:	Western Blotting (WB), ELISA, Immunohistochemistry (IHC), Flow Cytometry (FACS)

Product Details

Immunogen:	Purified recombinant fragment of human KEAP1 (AA: 380-624) expressed in E. coli.
Isotype:	IgG1
Purification:	Purified antibody

Target Details

Target:	KEAP1
Alternative Name:	KEAP1 (KEAP1 Products)
Background:	This gene encodes a protein containing KELCH-1 like domains, as well as a BTB/POZ domain. Kelch-like ECH-associated protein 1 interacts with NF-E2-related factor 2 in a redox-sensitive manner and the dissociation of the proteins in the cytoplasm is followed by transportation of NF-E2-related factor 2 to the nucleus. This interaction results in the expression

Target Details

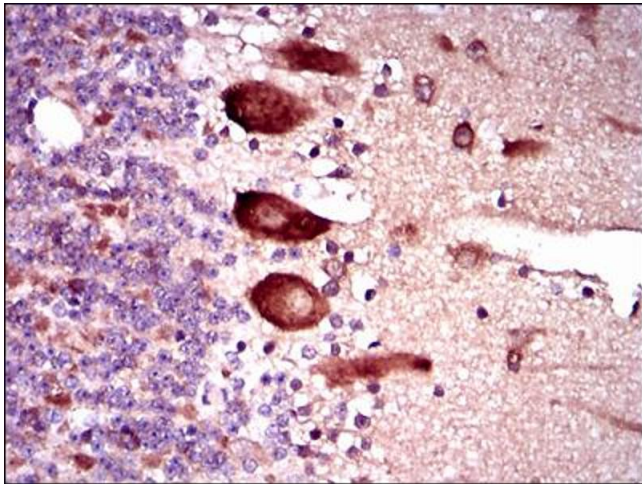
	of the catalytic subunit of gamma-glutamylcysteine synthetase. Two alternatively spliced transcript variants encoding the same isoform have been found for this gene.
Molecular Weight:	69.7 kDa
Gene ID:	9817
UniProt:	Q14145
Pathways:	Maintenance of Protein Location

Application Details

Application Notes:	Optimal working dilution should be determined by the investigator.
Restrictions:	For Research Use only

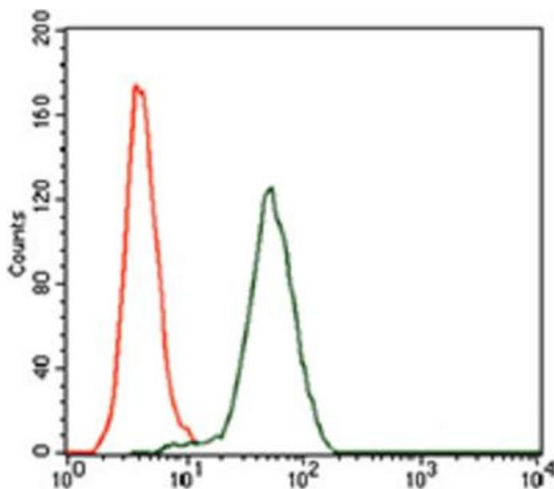
Handling

Format:	Liquid
Concentration:	1.0 mg/mL
Buffer:	PBS with 0.05 % sodium azide and 0.5 % protein stabilizer.
Preservative:	Sodium azide
Precaution of Use:	This product contains Sodium azide: a POISONOUS AND HAZARDOUS SUBSTANCE which should be handled by trained staff only.
Storage:	-20 °C
Storage Comment:	Aliquot and store at -20 °C. Avoid repeated freeze/thaw cycles.



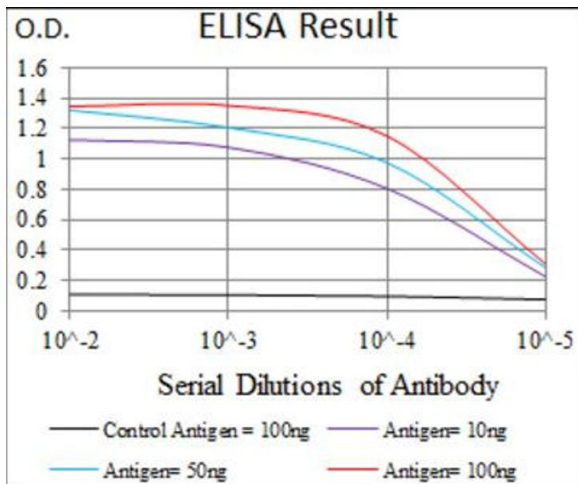
Flow Cytometry

Image 1. Flow cytometric analysis of HeLa cells using KEAP1 antibody (green) and negative control (red).



Immunohistochemistry

Image 2. Immunohistochemical analysis of paraffin-embedded cerebellum tissues using KEAP1 antibody with DAB staining.



ELISA

Image 3. Red: Control Antigen (100ng) ; Purple: Antigen (10ng) ; Green: Antigen (50ng) ; Blue: Antigen (100ng).

Please check the [product details page](#) for more images. Overall 7 images are available for ABIN1846111.