

Datasheet for ABIN1846128
anti-MAP2 antibody (AA 24-123)



[Go to Product page](#)

4 Images

Overview

Quantity:	100 µL
Target:	MAP2
Binding Specificity:	AA 24-123
Reactivity:	Human
Host:	Mouse
Clonality:	Monoclonal
Conjugate:	This MAP2 antibody is un-conjugated
Application:	Western Blotting (WB), ELISA, Flow Cytometry (FACS)

Product Details

Immunogen:	Purified recombinant fragment of human MAP2 (AA: 24-123) expressed in E. Coli.
Isotype:	IgG1
Purification:	Purified antibody

Target Details

Target:	MAP2
Alternative Name:	MAP2 (MAP2 Products)
Background:	This gene encodes a protein that belongs to the microtubule-associated protein family. The proteins of this family are thought to be involved in microtubule assembly, which is an essential step in neurogenesis. The exact function of this gene is still unknown. The products of similar genes in rat and mouse are neuron-specific cytoskeletal proteins that are enriched in dendrites,

Target Details

implicating a role in determining and stabilizing dendritic shape during neuron development. A number of alternatively spliced variants of this gene have been described, but the full length nature of some of them has not been determined.

Molecular Weight: 199 kDa

Gene ID: 4133

UniProt: [P11137](#)

Application Details

Application Notes: Optimal working dilution should be determined by the investigator.

Restrictions: For Research Use only

Handling

Format: Liquid

Concentration: 1.0 mg/mL

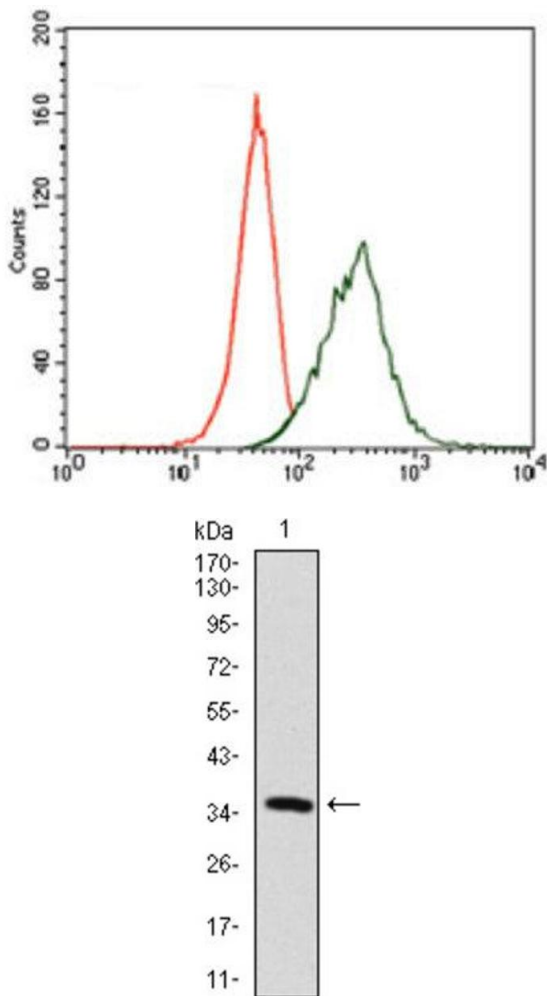
Buffer: PBS with 0.05 % sodium azide and 0.5 % protein stabilizer.

Preservative: Sodium azide

Precaution of Use: This product contains Sodium azide: a POISONOUS AND HAZARDOUS SUBSTANCE which should be handled by trained staff only.

Storage: -20 °C

Storage Comment: Aliquot and store at -20 °C. Avoid repeated freeze/thaw cycles.

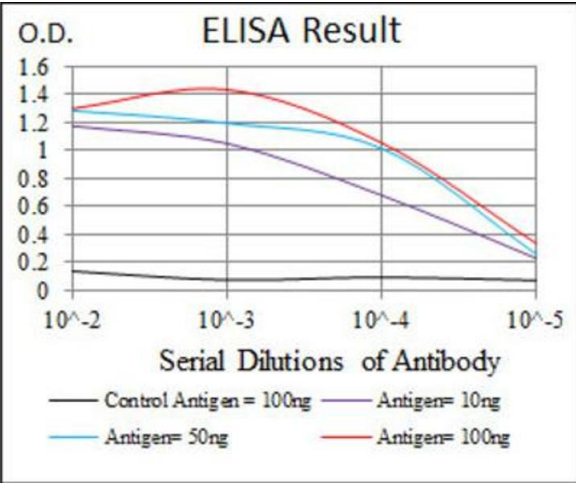


Flow Cytometry

Image 1.

Western Blotting

Image 2. Western blot analysis using MAP2 antibody against human MAP2 recombinant protein. (Expected MW is 36.1 kDa).



ELISA

Image 3. Red: Control Antigen (100ng) ; Purple: Antigen (10ng) ; Green: Antigen (50ng) ; Blue: Antigen (100ng).

Please check the [product details page](#) for more images. Overall 4 images are available for ABIN1846128.