

Datasheet for ABIN184613
anti-WRNIP1 antibody (C-Term)[Go to Product page](#)

1 Image

Overview

Quantity:	100 µg
Target:	WRNIP1
Binding Specificity:	C-Term
Reactivity:	Human
Host:	Goat
Clonality:	Polyclonal
Conjugate:	This WRNIP1 antibody is un-conjugated
Application:	Western Blotting (WB), ELISA, Immunohistochemistry (IHC)

Product Details

Purpose:	WHIP / WRNIP1
Immunogen:	Peptide with sequence EELRGVDFFKQRRRC, from the C Terminus of the protein sequence according to NP_064520.2, NP_569079.1.
Sequence:	EELRGVDFFK QRRRC
Isotype:	IgG
Specificity:	This antibody is expected to recognise isoform 1 (NP_064520.2) and isoform 2 (NP_569079.1).
Cross-Reactivity:	Cow, Dog, Human, Mouse, Rat
Purification:	Purified from goat serum by ammonium sulphate precipitation followed by antigen affinity chromatography using the immunizing peptide.
Grade:	Verified

Target Details

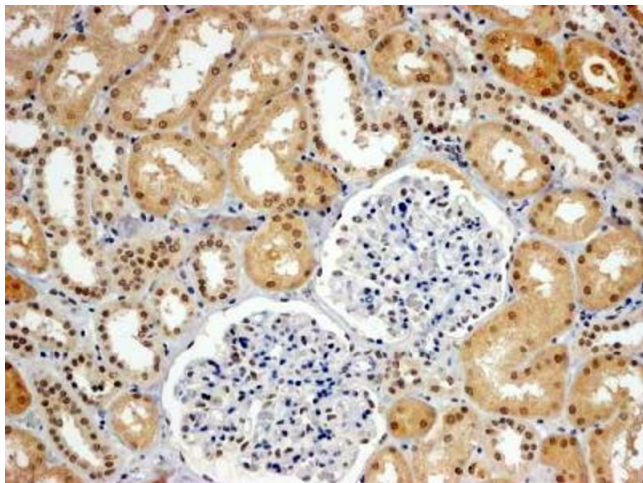
Target:	WRNIP1
Alternative Name:	WRNIP1 (WRNIP1 Products)
Background:	WHIP, Werner helicase interacting protein, FLJ22526, putative helicase RUVBL, Werner helicase interacting protein 1, RP11-420G6.2, bA420G6.2,
Gene ID:	56897
NCBI Accession:	NP_064520 , NP_569079

Application Details

Application Notes:	<p>Immunohistochemistry: In paraffin embedded Human Kidney shows nuclear staining, stronger in DCT compared to PCT. Recommended concentration, 4-6 µg/mL.</p> <p>Western Blot: Approx 90 kDa band observed in lysates of cell line Jurkat (calculated MW of 72.1 kDa according to NP_064520.2). The observed molecular weight corresponds to earlier findings in literature with different antibodies (Bish RA, Myers MP., J Biol</p> <p>Peptide ELISA: antibody detection limit dilution 1:32000.</p>
Restrictions:	For Research Use only

Handling

Format:	Liquid
Concentration:	0.5 mg/mL
Buffer:	Supplied at 0.5 mg/mL in Tris saline, 0.02 % sodium azide, pH 7.3 with 0.5 % bovine serum albumin.
Preservative:	Sodium azide
Precaution of Use:	This product contains Sodium azide: a POISONOUS AND HAZARDOUS SUBSTANCE which should be handled by trained staff only.
Handling Advice:	Minimize freezing and thawing.
Storage:	-20 °C
Storage Comment:	Aliquot and store at -20°C, with minimal freeze/thawing. A working aliquot may be refrigerated at 4°C for a few weeks and still remain viable.



Immunohistochemistry

Image 1. ABIN184613 (4µg/ml) staining of paraffin embedded Human Kidney. Steamed antigen retrieval with Tris/EDTA buffer pH 9, HRP-staining.