

Datasheet for ABIN184618  
**anti-SET/TAF-I antibody (N-Term)**

## 7 Images

[Go to Product page](#)

## Overview

Quantity:	100 µg
Target:	SET/TAF-I (SET)
Binding Specificity:	N-Term
Reactivity:	Human
Host:	Goat
Clonality:	Polyclonal
Conjugate:	This SET/TAF-I antibody is un-conjugated
Application:	Western Blotting (WB), Immunohistochemistry (IHC), ELISA

## Product Details

Purpose:	SET / I2 alpha PP2A
Immunogen:	Peptide with sequence SAPAAKVSKKELNS-C, from the N Terminus of the protein sequence according to NP_003002.2.
Sequence:	SAPAAKVSKK ELNS
Isotype:	IgG
Specificity:	This antibody is expected to recognize isoform 2 (NP_003002.2).
Cross-Reactivity:	Cow, Human
Purification:	Purified from goat serum by ammonium sulphate precipitation followed by antigen affinity chromatography using the immunizing peptide.
Grade:	Verified

## Target Details

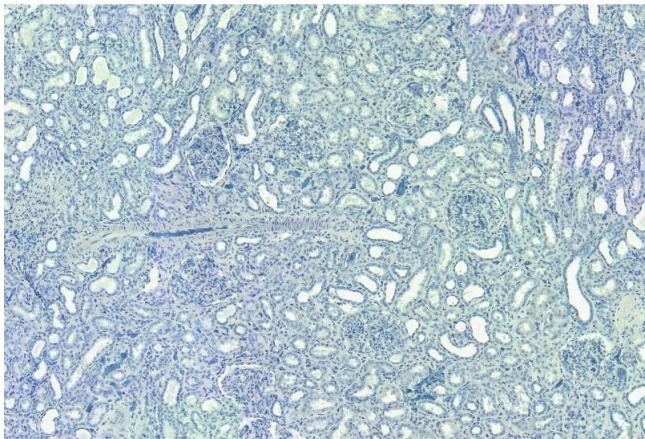
Target:	SET/TAF-I (SET)
Alternative Name:	SET ( <a href="#">SET Products</a> )
Background:	SET, SET nuclear oncogene, 2PP2A, I2PP2A, IGAAD, IPP2A2, PHAPII, TAF-I, TAF-IBETA, LA-DR-associated protein II, OTTHUMP00000022286, SET translocation (myeloid leukemia-associated), Template-Activating Factor-I, chromatin remodelling factor, inhibitor of g
Gene ID:	6418
NCBI Accession:	<a href="#">NP_003002</a>
Pathways:	<a href="#">Apoptosis</a>

## Application Details

Application Notes:	Immunohistochemistry: Paraffin embedded Human Kidney. Recommended concentration: 7 µg/mL.  Western Blot: Approx 38 kDa band observed in lysates of Human Kidney lysates and of cell lines Daudi and Molt4 (calculated MW of 32.1 kDa according to NP_003002.2). Recommended concentration: 0.3-1 µg/mL. Primary incubation was 1 hour.  Peptide ELISA: antibody detection limit dilution 1:128000.
Restrictions:	For Research Use only

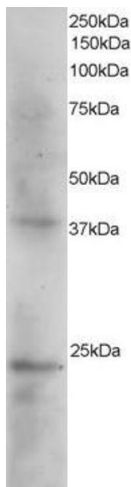
## Handling

Format:	Liquid
Concentration:	0.5 mg/mL
Buffer:	Supplied at 0.5 mg/mL in Tris saline, 0.02 % sodium azide, pH 7.3 with 0.5 % bovine serum albumin.
Preservative:	Sodium azide
Precaution of Use:	This product contains Sodium azide: a POISONOUS AND HAZARDOUS SUBSTANCE which should be handled by trained staff only.
Handling Advice:	Minimize freezing and thawing.
Storage:	-20 °C
Storage Comment:	Aliquot and store at -20°C, with minimal freeze/thawing. A working aliquot may be refrigerated at 4°C for a few weeks and still remain viable.



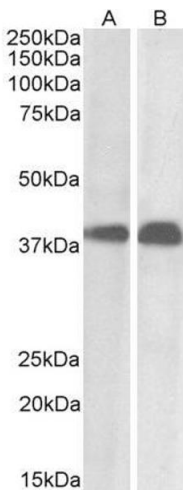
#### Immunohistochemistry

**Image 1.** (ABIN184618) Negative Control showing staining of paraffin embedded Human Kidney, with no primary antibody.



#### Western Blotting

**Image 2.** ABIN184618 staining (2µg/ml) of Human Kidney extracts (RIPA buffer, 35µg total protein per lane). Primary incubated for 1 hour. Detected by western blot using chemiluminescence.



#### Western Blotting

**Image 3.** ABIN184618 (0.01µg/ml) staining of Daudi (A) and Molt4 (B) cell lysate (35µg protein in RIPA buffer). Primary incubation was 1 hour. Detected by chemiluminescence.

Please check the [product details page](#) for more images. Overall 7 images are available for ABIN184618.