

Datasheet for ABIN184620  
**anti-FYN antibody (N-Term)**



[Go to Product page](#)

2 Images

## Overview

Quantity:	100 µg
Target:	FYN
Binding Specificity:	N-Term
Reactivity:	Human
Host:	Goat
Clonality:	Polyclonal
Conjugate:	This FYN antibody is un-conjugated
Application:	Western Blotting (WB), ELISA

## Product Details

Purpose:	FYN
Immunogen:	Peptide with sequence VQCKDKEATKLTE, from the N Terminus of the protein sequence according to NP_002028.1, NP_694592.1, NP_694593.1.
Sequence:	VQCKDKEATK LTE
Isotype:	IgG
Specificity:	This antibody is expected to recognise all three reported isoforms (as represented by NP_002028.1, NP_694592.1, NP_694593.1).
Cross-Reactivity:	Cow, Dog, Human, Mouse, Pig, Rat
Purification:	Purified from goat serum by ammonium sulphate precipitation followed by antigen affinity chromatography using the immunizing peptide.

## Product Details

Grade: Verified

## Target Details

Target:	FYN
Alternative Name:	FYN ( <a href="#">FYN Products</a> )
Background:	FYN, SLK, SYN, MGC45350, FYN oncogene related to SRC, FGR, YES, src-like kinase, c-syn protooncogene, tyrosine kinase p59fyn(T), src/yes-related novel gene, OKT3-induced calcium influx regulator, proto-oncogene tyrosine-protein kinase fyn, RP1-66H14.1, OT
Gene ID:	2534, 14360, 25150
NCBI Accession:	<a href="#">NP_002028</a> , <a href="#">NP_694592</a> , <a href="#">NP_694593</a>
Pathways:	<a href="#">JAK-STAT Signaling</a> , <a href="#">TCR Signaling</a> , <a href="#">Fc-epsilon Receptor Signaling Pathway</a> , <a href="#">EGFR Signaling Pathway</a> , <a href="#">Neurotrophin Signaling Pathway</a> , <a href="#">Feeding Behaviour</a> , <a href="#">CXCR4-mediated Signaling Events</a> , <a href="#">Signaling Events mediated by VEGFR1 and VEGFR2</a> , <a href="#">Activated T Cell Proliferation</a> , <a href="#">Thromboxane A2 Receptor Signaling</a>

## Application Details

Application Notes:	Western Blot: Approx 55 kDa band observed in lysates of cell lines A431 and Jurkat (calculated MW of 54.5 kDa according to NP_694593.1). Recommended for use at 0.3-1 µg/mL. Peptide ELISA: antibody detection limit dilution 1:32000.
Restrictions:	For Research Use only

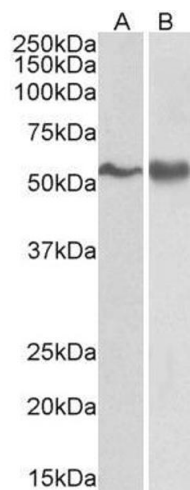
## Handling

Format:	Liquid
Concentration:	0.5 mg/mL
Buffer:	Supplied at 0.5 mg/mL in Tris saline, 0.02 % sodium azide, pH 7.3 with 0.5 % bovine serum albumin.
Preservative:	Sodium azide
Precaution of Use:	This product contains Sodium azide: a POISONOUS AND HAZARDOUS SUBSTANCE which should be handled by trained staff only.
Handling Advice:	Minimize freezing and thawing.

Handling

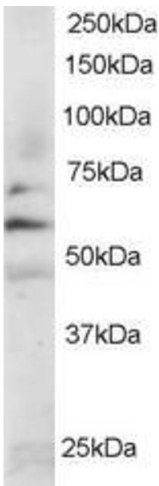
Storage:	-20 °C
Storage Comment:	Aliquot and store at -20°C, with minimal freeze/thawing. A working aliquot may be refrigerated at 4°C for a few weeks and still remain viable.

Images



**Western Blotting**

**Image 1.** ABIN184620 (0.3µg/ml) staining of A431 (A) and Jurkat lysate (B) (35µg protein in RIPA buffer). Primary incubation was 1 hour. Detected by chemiluminescence.



**Western Blotting**

**Image 2.** ABIN184620 staining 0.2µg/ml of Jurkat lysate (RIPA buffer, 35µg total protein per lane). Primary incubated for 1 hour. Detected by western blot using chemiluminescence.