

Datasheet for ABIN184621
anti-SH3GLB1 antibody (C-Term)

5 Images

[Go to Product page](#)

Overview

Quantity:	100 µg
Target:	SH3GLB1
Binding Specificity:	C-Term
Reactivity:	Human, Mouse, Rat
Host:	Goat
Clonality:	Polyclonal
Conjugate:	This SH3GLB1 antibody is un-conjugated
Application:	Western Blotting (WB), ELISA, Immunohistochemistry (IHC), Flow Cytometry (FACS)

Product Details

Purpose:	BIF-1 / SH3GLB1
Immunogen:	Peptide with sequence C-QKGKVPITYLELLN, from the C Terminus of the protein sequence according to NP_057093.1.
Sequence:	QKGKVPITYL ELLN
Isotype:	IgG
Cross-Reactivity:	Cow, Dog, Human, Mouse, Rat
Purification:	Purified from goat serum by ammonium sulphate precipitation followed by antigen affinity chromatography using the immunizing peptide.
Grade:	Verified

Target Details

Target:	SH3GLB1
Alternative Name:	SH3GLB1 (SH3GLB1 Products)
Background:	SH3GLB1, Bif-1, SH3-domain GRB2-like endophilin B1, CGI-61, KIAA0491, endophilin B1, Bax-interacting factor 1, SH3-containing protein SH3GLB1, SH3-domain, GRB2-like, endophilin B1, SH3-containing protein SH3GLB1 CGI-61 protein endophilin B1, dJ612B15.2
Gene ID:	51100, 54673
NCBI Accession:	NP_057093
Pathways:	Autophagy

Application Details

Application Notes:	Immunohistochemistry: Paraffin embedded Human Colon. Recommended concentration: 2.5 µg/mL. Western Blot: Approx 40 kDa band observed in lysates of cell lines HEK293 and NIH3T3, and approx. 38 kDa in lysates of cell lines A431, RAW264.7 and KNRK (calculated MW of 40.8 kDa according to Human NP_057093.1, Mouse NP_062337.1 and Rat NP_001011929.1). Peptide ELISA: antibody detection limit dilution 1:32000.
Comment:	Flow Cytometry: Flow cytometric analysis of A431 cells. Recommended concentration: 10ug/ml.
Restrictions:	For Research Use only

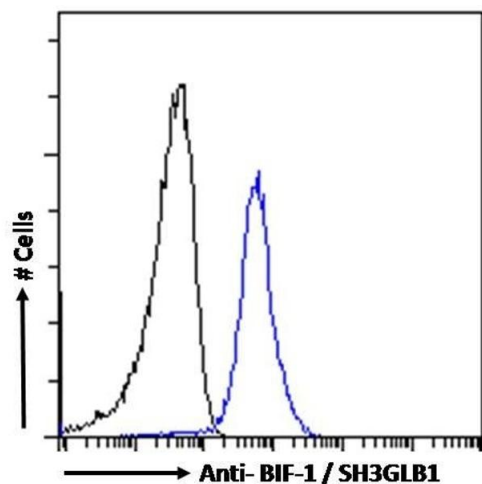
Handling

Format:	Liquid
Concentration:	0.5 mg/mL
Buffer:	Supplied at 0.5 mg/mL in Tris saline, 0.02 % sodium azide, pH 7.3 with 0.5 % bovine serum albumin.
Preservative:	Sodium azide
Precaution of Use:	This product contains Sodium azide: a POISONOUS AND HAZARDOUS SUBSTANCE which should be handled by trained staff only.
Handling Advice:	Minimize freezing and thawing.
Storage:	-20 °C

Handling

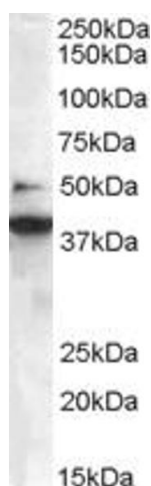
Storage Comment: Aliquot and store at -20°C, with minimal freeze/thawing. A working aliquot may be refrigerated at 4°C for a few weeks and still remain viable.

Images



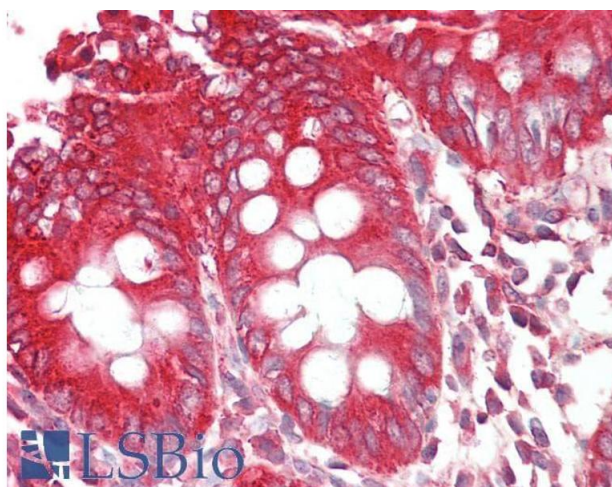
Flow Cytometry

Image 1. (ABIN184621)-P1 Flow cytometric analysis of paraformaldehyde fixed A431 cells (blue line), permeabilized with 0.5 % Triton. Primary incubation 1hr (10 µg/mL) followed by Alexa Fluor 488 secondary antibody (1 µg/mL). IgG control: Unimmunized goat IgG (black line)



Western Blotting

Image 2. ABIN184621 staining (0.3µg/ml) of Jurkat lysate (RIPA buffer, 35µg total protein per lane). Primary incubated for 1 hour. Detected by chemiluminescence.



Immunohistochemistry

Image 3. ABIN184621 (2.5µg/ml) staining of paraffin embedded Human Colon. Steamed antigen retrieval with citrate buffer pH 6, AP-staining.

Please check the [product details page](#) for more images. Overall 5 images are available for ABIN184621.