

Datasheet for ABIN184623

## anti-MTA1 antibody (Internal Region)



[Go to Product page](#)

### 3 Images

#### Overview

Quantity:	100 µg
Target:	MTA1
Binding Specificity:	Internal Region
Reactivity:	Human
Host:	Goat
Clonality:	Polyclonal
Conjugate:	This MTA1 antibody is un-conjugated
Application:	Western Blotting (WB), ELISA, Immunohistochemistry (IHC)

#### Product Details

Purpose:	MTA1
Immunogen:	Peptide with sequence C-PGDVFYMPKE, from the internal region (near the C Terminus) of the protein sequence according to AAA78935.1.
Sequence:	PGDVFYMPKE
Isotype:	IgG
Specificity:	Immunizing peptide was designed based on NP_004680.1. The version changed to NP_004680.2 and no longer matches with the peptide.
Cross-Reactivity:	Human
Purification:	Purified from goat serum by ammonium sulphate precipitation followed by antigen affinity chromatography using the immunizing peptide.

## Product Details

Grade: Verified

## Target Details

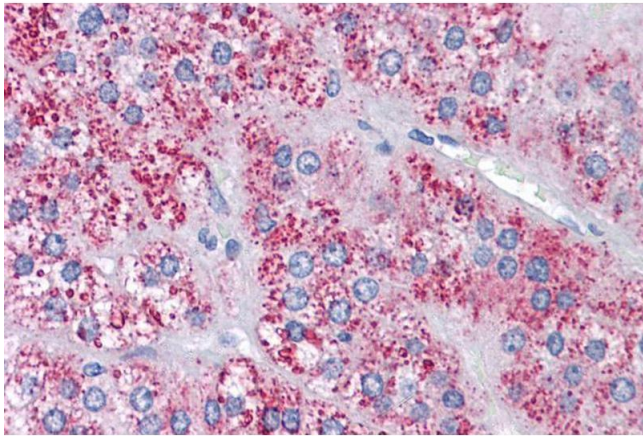
Target:	MTA1
Alternative Name:	MTA1 ( <a href="#">MTA1 Products</a> )
Background:	MTA1, metastasis associated 1, metastasis associated gene 1, metastasis associated gene 1 protein, metastasis associated protein
Gene ID:	9112
Pathways:	<a href="#">Chromatin Binding</a>

## Application Details

Application Notes:	Immunohistochemistry: Paraffin embedded Human Testis and Adrenal Gland. Recommended concentration: 3.75 µg/mL. Western Blot: Approx 75 kDa band observed in Human Placenta lysates (calculated MW of 80.8 kDa according to NP_004680.1). Recommended concentration: 0.03-0.1 µg/mL. Peptide ELISA: antibody detection limit dilution 1:16000.
Restrictions:	For Research Use only

## Handling

Format:	Liquid
Concentration:	0.5 mg/mL
Buffer:	Supplied at 0.5 mg/mL in Tris saline, 0.02 % sodium azide, pH 7.3 with 0.5 % bovine serum albumin.
Preservative:	Sodium azide
Precaution of Use:	This product contains Sodium azide: a POISONOUS AND HAZARDOUS SUBSTANCE which should be handled by trained staff only.
Handling Advice:	Minimize freezing and thawing.
Storage:	-20 °C
Storage Comment:	Aliquot and store at -20°C, with minimal freeze/thawing. A working aliquot may be refrigerated at 4°C for a few weeks and still remain viable.



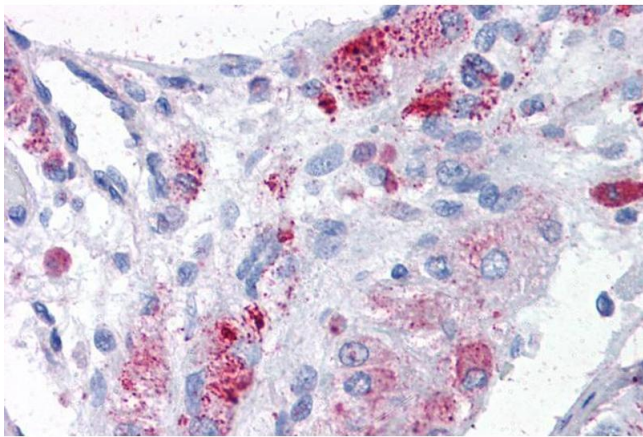
#### Immunohistochemistry

**Image 1.** ABIN184623 (3.75µg/ml) staining of paraffin embedded Human Adrenal Gland. Steamed antigen retrieval with citrate buffer pH 6, AP-staining.



#### Western Blotting

**Image 2.** ABIN184623 staining (0.03µg/ml) of Human Placenta lysate (RIPA buffer, 35µg total protein per lane). Primary incubated for 1 hour. Detected by chemiluminescence.



#### Immunohistochemistry

**Image 3.** ABIN184623 (3.75µg/ml) staining of paraffin embedded Human Testis. Steamed antigen retrieval with citrate buffer pH 6, AP-staining.