

Datasheet for ABIN184625  
**anti-BAG2 antibody (C-Term)**[Go to Product page](#)

## 2 Images

## Overview

Quantity:	100 µg
Target:	BAG2
Binding Specificity:	C-Term
Reactivity:	Human, Pig
Host:	Goat
Clonality:	Polyclonal
Conjugate:	This BAG2 antibody is un-conjugated
Application:	Western Blotting (WB), ELISA

## Product Details

Purpose:	BAG2
Immunogen:	Peptide with sequence CSKTLQQNAESRFN, from the C Terminus of the protein sequence according to NP_004273.1.
Sequence:	CSKTLQQNAE SRFN
Isotype:	IgG
Cross-Reactivity:	Cow, Human, Pig
Purification:	Purified from goat serum by ammonium sulphate precipitation followed by antigen affinity chromatography using the immunizing peptide.
Grade:	Verified

## Target Details

Target:	BAG2
Alternative Name:	BAG2 ( <a href="#">BAG2 Products</a> )
Background:	BAG2, BCL2-associated athanogene 2, BAG-2, BAG-family molecular chaperone regulator-2, RP3-496N17.2, KIAA0576, MGC149462, dJ417I1.2, dJ417I1.2 (BAG-family molecular chaperone regulator 2)
Gene ID:	9532
NCBI Accession:	<a href="#">NP_004273</a>

## Application Details

Application Notes:	Western Blot: Approx 25 kDa band observed in Human HeLa lysates (calculated MW of 23.7 kDa according to NP_004273.1). Recommended concentration: 0.1-0.3 µg/mL. Peptide ELISA: antibody detection limit dilution 1:8000.
Restrictions:	For Research Use only

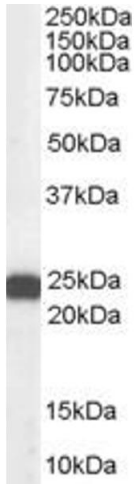
## Handling

Format:	Liquid
Concentration:	0.5 mg/mL
Buffer:	Supplied at 0.5 mg/mL in Tris saline, 0.02 % sodium azide, pH 7.3 with 0.5 % bovine serum albumin.
Preservative:	Sodium azide
Precaution of Use:	This product contains Sodium azide: a POISONOUS AND HAZARDOUS SUBSTANCE which should be handled by trained staff only.
Handling Advice:	Minimize freezing and thawing.
Storage:	-20 °C
Storage Comment:	Aliquot and store at -20°C, with minimal freeze/thawing. A working aliquot may be refrigerated at 4°C for a few weeks and still remain viable.



**Western Blotting**

**Image 1.** ABIN184625 (0.3µg/ml) staining of Pig Testis lysate (35µg protein in RIPA buffer). Primary incubation was 1 hour. Detected by chemiluminescence.



**Image 2.** ABIN184625 (0.3µg/ml) staining of Hela lysate (35µg protein in RIPA buffer). Primary incubation was 1 hour. Detected by chemiluminescence.