

Datasheet for ABIN184630
anti-DOCK1 antibody (C-Term)[Go to Product page](#)

1 Image

Overview

Quantity:	100 µg
Target:	DOCK1
Binding Specificity:	C-Term
Reactivity:	Human
Host:	Goat
Clonality:	Polyclonal
Conjugate:	This DOCK1 antibody is un-conjugated
Application:	Western Blotting (WB)

Product Details

Purpose:	DOCK1
Immunogen:	C-TTRKQTSVDSGIVQ
Sequence:	TTRKQTSVDS GIVQ
Isotype:	IgG
Cross-Reactivity:	Cow, Dog, Human, Mouse, Pig, Rat
Purification:	Purified from goat serum by ammonium sulphate precipitation followed by antigen affinity chromatography using the immunizing peptide.
Grade:	Verified

Target Details

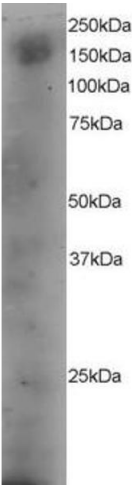
Target:	DOCK1
Alternative Name:	DOCK1 (DOCK1 Products)
Background:	DOCK1, DOCK180, dedicator of cyto-kinesis 1, RP11-82L9.1, ced5
Gene ID:	1793, 330662
NCBI Accession:	NP_001371
Pathways:	Signaling of Hepatocyte Growth Factor Receptor

Application Details

Application Notes:	Western Blot: Approx 150-200 kDa band seen in A431 cell lysate. Recommended for use at 3-4 µg/mL.
Restrictions:	For Research Use only

Handling

Format:	Liquid
Concentration:	0.5 mg/mL
Buffer:	Supplied at 0.5 mg/mL in Tris saline, 0.02 % sodium azide, pH 7.3 with 0.5 % bovine serum albumin.
Preservative:	Sodium azide
Precaution of Use:	This product contains Sodium azide: a POISONOUS AND HAZARDOUS SUBSTANCE which should be handled by trained staff only.
Handling Advice:	Minimize freezing and thawing.
Storage:	-20 °C
Storage Comment:	Aliquot and store at -20°C, with minimal freeze/thawing. A working aliquot may be refrigerated at 4°C for a few weeks and still remain viable.



Western Blotting

Image 1. ABIN184630 staining (4µg/ml) of A431 lysate (RIPA buffer, 35µg total protein per lane). Primary incubated for 12 hour. Detected by western blot using chemiluminescence.