

Datasheet for ABIN1846306
anti-Surfactant Protein C antibody (AA 60-180)



[Go to Product page](#)

4 Images

Overview

Quantity:	100 µL
Target:	Surfactant Protein C (SFTPC)
Binding Specificity:	AA 60-180
Reactivity:	Human
Host:	Mouse
Clonality:	Monoclonal
Conjugate:	This Surfactant Protein C antibody is un-conjugated
Application:	Western Blotting (WB), ELISA

Product Details

Immunogen:	Purified recombinant fragment of human SFTPC (AA: 60-180) expressed in E. Coli.
Isotype:	IgG1
Purification:	Purified antibody

Target Details

Target:	Surfactant Protein C (SFTPC)
Alternative Name:	SFTPC (SFTPC Products)
Background:	<p>This gene encodes the pulmonary-associated surfactant protein C (SPC), an extremely hydrophobic surfactant protein essential for lung function and homeostasis after birth. Pulmonary surfactant is a surface-active lipoprotein complex composed of 90% lipids and 10% proteins which include plasma proteins and apolipoproteins SPA, SPB, SPC and SPD. The</p>

Target Details

surfactant is secreted by the alveolar cells of the lung and maintains the stability of pulmonary tissue by reducing the surface tension of fluids that coat the lung. Multiple mutations in this gene have been identified, which cause pulmonary surfactant metabolism dysfunction type 2, also called pulmonary alveolar proteinosis due to surfactant protein C deficiency, and are associated with interstitial lung disease in older infants, children, and adults.

Molecular Weight: 21 kDa

Gene ID: 6440

UniProt: [P11686](#)

Application Details

Application Notes: Optimal working dilution should be determined by the investigator.

Restrictions: For Research Use only

Handling

Format: Liquid

Concentration: 1.0 mg/mL

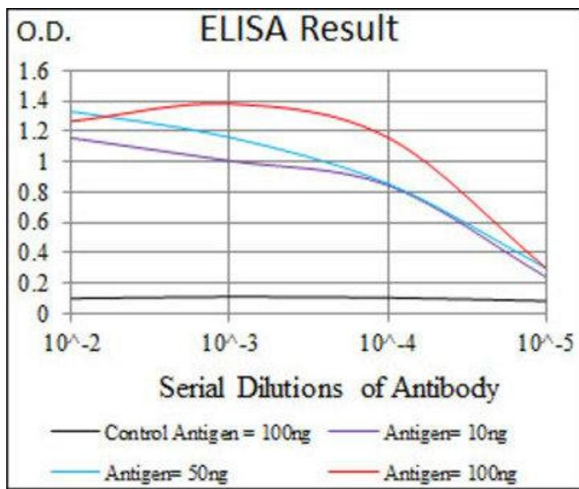
Buffer: PBS with 0.05 % sodium azide and 0.5 % protein stabilizer.

Preservative: Sodium azide

Precaution of Use: This product contains Sodium azide: a POISONOUS AND HAZARDOUS SUBSTANCE which should be handled by trained staff only.

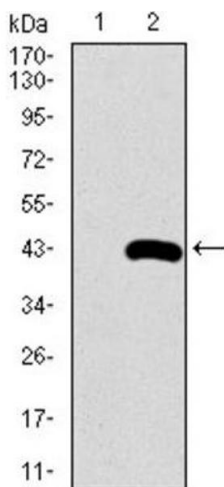
Storage: -20 °C

Storage Comment: Aliquot and store at -20 °C. Avoid repeated freeze/thaw cycles.



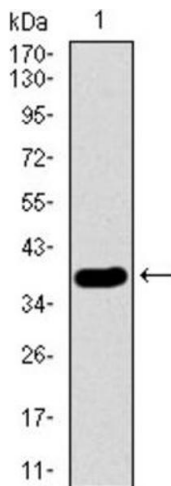
ELISA

Image 1.



Western Blotting

Image 2.



Western Blotting

Image 3. Western blot analysis using SFTPC antibody against HEK293 (1) and SFTPC (AA: 60-180) -hlgGfc transfected HEK293 (2) cell lysate.

Please check the [product details page](#) for more images. Overall 4 images are available for ABIN1846306.