

Datasheet for ABIN1846316
anti-Cadherin 5 antibody (AA 29-223)



[Go to Product page](#)

4 Images

Overview

Quantity:	100 µL
Target:	Cadherin 5 (CDH5)
Binding Specificity:	AA 29-223
Reactivity:	Human, Rat
Host:	Mouse
Clonality:	Monoclonal
Conjugate:	This Cadherin 5 antibody is un-conjugated
Application:	Western Blotting (WB), ELISA, Flow Cytometry (FACS)

Product Details

Immunogen:	Purified recombinant fragment of human CDH5 (AA: 29-223) expressed in E. coli.
Isotype:	IgG1
Purification:	Purified antibody

Target Details

Target:	Cadherin 5 (CDH5)
Alternative Name:	CDH5 (CDH5 Products)
Background:	This gene is a classical cadherin from the cadherin superfamily and is located in a six-cadherin cluster in a region on the long arm of chromosome 16 that is involved in loss of heterozygosity events in breast and prostate cancer. The encoded protein is a calcium-dependent cell-cell adhesion glycoprotein comprised of five extracellular cadherin repeats, a transmembrane

Target Details

region and a highly conserved cytoplasmic tail. Functioning as a classic cadherin by imparting to cells the ability to adhere in a homophilic manner, the protein may play an important role in endothelial cell biology through control of the cohesion and organization of the intercellular junctions. An alternative splice variant has been described but its full length sequence has not been determined.

Molecular Weight: 87.5 kDa

Gene ID: 1003, 307618

Pathways: [Cell-Cell Junction Organization, Signaling Events mediated by VEGFR1 and VEGFR2](#)

Application Details

Application Notes: Optimal working dilution should be determined by the investigator.

Restrictions: For Research Use only

Handling

Format: Liquid

Concentration: 1.0 mg/mL

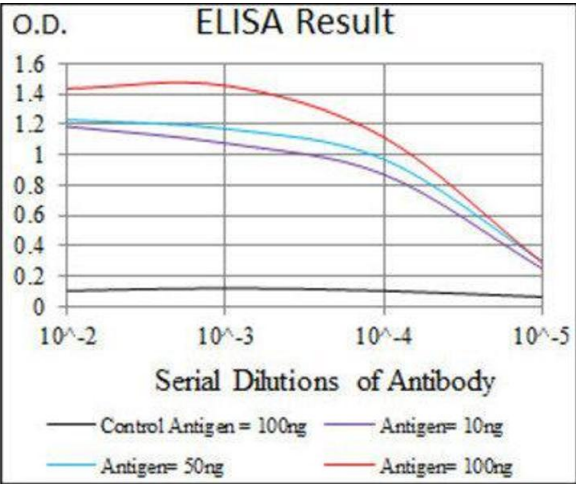
Buffer: PBS with 0.05 % sodium azide and 0.5 % protein stabilizer.

Preservative: Sodium azide

Precaution of Use: This product contains Sodium azide: a POISONOUS AND HAZARDOUS SUBSTANCE which should be handled by trained staff only.

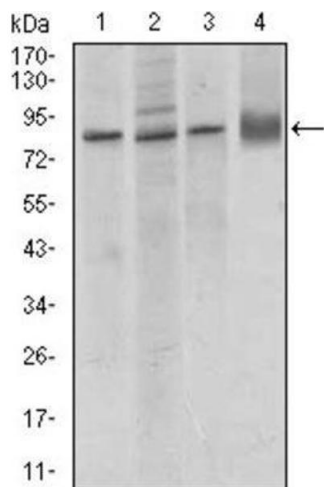
Storage: -20 °C

Storage Comment: Aliquot and store at -20 °C. Avoid repeated freeze/thaw cycles.



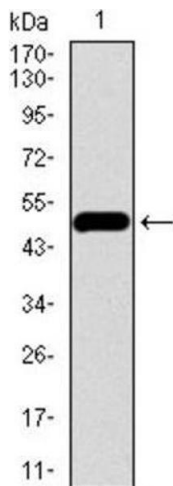
ELISA

Image 1.



Western Blotting

Image 2.



Western Blotting

Image 3.

Please check the [product details page](#) for more images. Overall 4 images are available for ABIN1846316.