

Datasheet for ABIN1846321  
**anti-PHC1 antibody (AA 758-1004)**



[Go to Product page](#)

4 Images

## Overview

Quantity:	100 µL
Target:	PHC1
Binding Specificity:	AA 758-1004
Reactivity:	Human
Host:	Mouse
Clonality:	Monoclonal
Conjugate:	This PHC1 antibody is un-conjugated
Application:	Western Blotting (WB), ELISA, Flow Cytometry (FACS)

## Product Details

Immunogen:	Purified recombinant fragment of human PHC1 (AA: 758-1004) expressed in E. coli.
Isotype:	IgG1
Purification:	Purified antibody

## Target Details

Target:	PHC1
Alternative Name:	PHC1 ( <a href="#">PHC1 Products</a> )
Background:	This gene is a homolog of the Drosophila polyhomeotic gene, which is a member of the Polycomb group of genes. The gene product is a component of a multimeric protein complex that contains EDR2 and the vertebrate Polycomb protein BMH1. The gene product, the EDR2 protein, and the Drosophila polyhomeotic protein share 2 highly conserved domains, named

## Target Details

homology domains I and II. These domains are involved in protein-protein interactions and may mediate heterodimerization of the protein encoded by this gene and the EDR2 protein.

Molecular Weight: 105.5 kDa

Gene ID: 1911

UniProt: [P78364](#)

## Application Details

Application Notes: Optimal working dilution should be determined by the investigator.

Restrictions: For Research Use only

## Handling

Format: Liquid

Concentration: 1.0 mg/mL

Buffer: PBS with 0.05 % sodium azide and 0.5 % protein stabilizer.

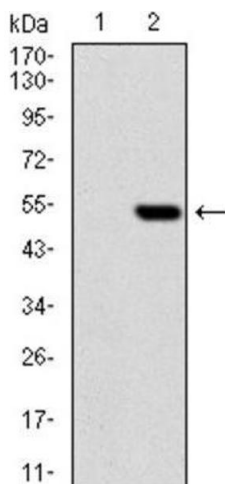
Preservative: Sodium azide

Precaution of Use: This product contains Sodium azide: a POISONOUS AND HAZARDOUS SUBSTANCE which should be handled by trained staff only.

Storage: -20 °C

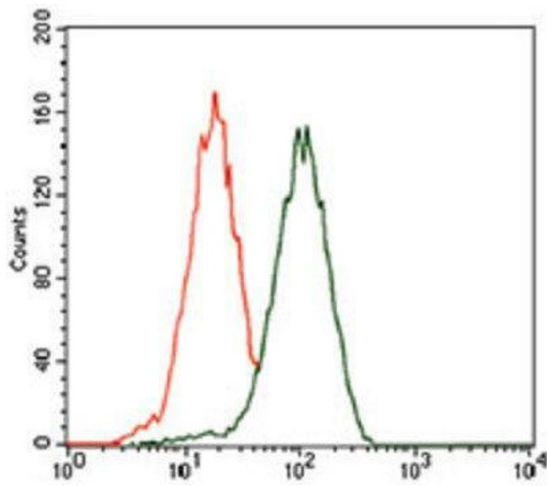
Storage Comment: Aliquot and store at -20 °C. Avoid repeated freeze/thaw cycles.

## Images



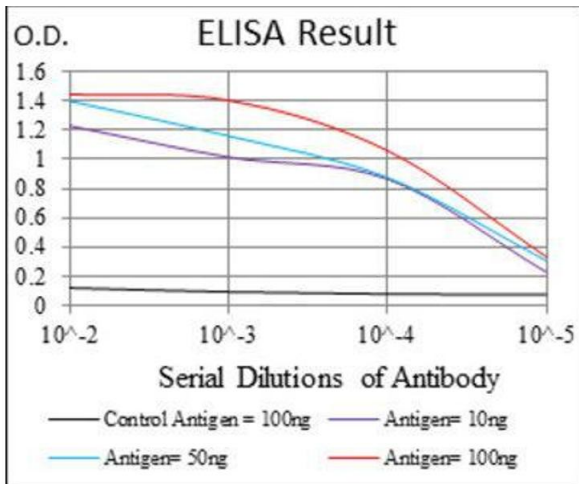
### Western Blotting

Image 1.



### Flow Cytometry

Image 2.



### ELISA

Image 3.

Please check the [product details page](#) for more images. Overall 4 images are available for ABIN1846321.