

Datasheet for ABIN184635  
**anti-MTMR9 antibody (C-Term)**

## 4 Images

[Go to Product page](#)

## Overview

Quantity:	100 µg
Target:	MTMR9
Binding Specificity:	C-Term
Reactivity:	Human, Rat
Host:	Goat
Clonality:	Polyclonal
Conjugate:	This MTMR9 antibody is un-conjugated
Application:	Immunohistochemistry (IHC), ELISA, Immunofluorescence (IF), Flow Cytometry (FACS)

## Product Details

Purpose:	MTMR9 (C Terminus)
Immunogen:	Peptide with sequence C-AELETEDGMQESP, from the C Terminus of the protein sequence according to NP_056273.2.
Sequence:	AELETEDGMQ ESP
Isotype:	IgG
Cross-Reactivity:	Human, Mouse, Rat
Purification:	Purified from goat serum by ammonium sulphate precipitation followed by antigen affinity chromatography using the immunizing peptide.
Grade:	Verified

## Target Details

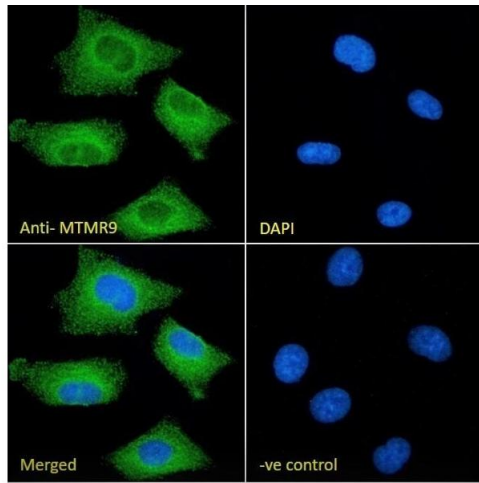
Target:	MTMR9
Alternative Name:	MTMR9 ( <a href="#">MTMR9 Products</a> )
Background:	MTMR9, myotubularin related protein 9, MTMR8, C8orf9, LIP-STYX, DKFZP434K171, DKFZp434K171, myotubularin related protein 8, MGC126672, myotubularin-related protein 9, myotubularin-related protein 9 variant
Gene ID:	66036
NCBI Accession:	<a href="#">NP_056273</a>

## Application Details

Application Notes:	Immunohistochemistry: In paraffin embedded Rat Spleen shows staining of cytoplasm in select cells. Recommended concentration: 5-10 µg/mL. This product has also been successfully used on Rat Hypothalamus.  Peptide ELISA: antibody detection limit dilution 1:8000.
Comment:	<b>Immunofluorescence:</b> Strong expression of the protein seen in the cytoplasm and Endoplasmic reticulum of A549 and U2OS cells. Recommended concentration: 10µg/ml. <b>Flow Cytometry:</b> Flow cytometric analysis of A549 cells. R
Restrictions:	For Research Use only

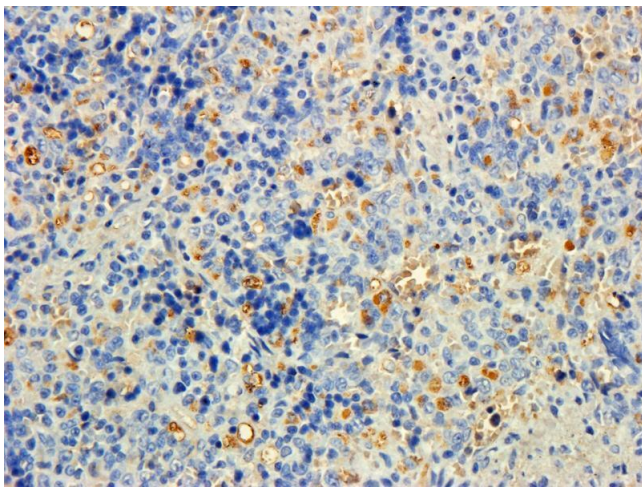
## Handling

Format:	Liquid
Concentration:	0.5 mg/mL
Buffer:	Supplied at 0.5 mg/mL in Tris saline, 0.02 % sodium azide, pH 7.3 with 0.5 % bovine serum albumin.
Preservative:	Sodium azide
Precaution of Use:	This product contains Sodium azide: a POISONOUS AND HAZARDOUS SUBSTANCE which should be handled by trained staff only.
Handling Advice:	Minimize freezing and thawing.
Storage:	-20 °C
Storage Comment:	Aliquot and store at -20°C, with minimal freeze/thawing. A working aliquot may be refrigerated at 4°C for a few weeks and still remain viable.



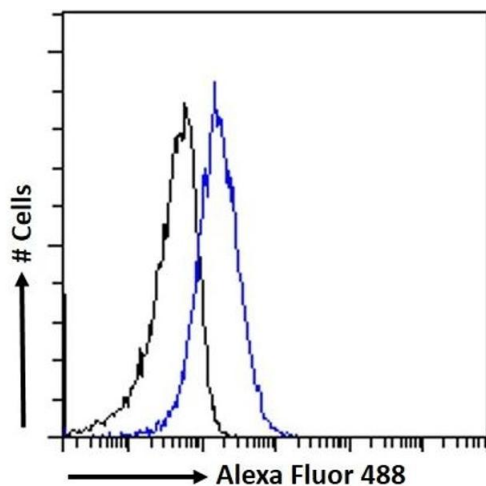
### Immunofluorescence

**Image 1.** (ABIN184635) Immunofluorescence analysis of paraformaldehyde fixed A549 cells, permeabilized with 0.15 % Triton. Primary incubation 1hr (10 µg/mL) followed by Alexa Fluor 488 secondary antibody (2 µg/mL), showing cytoplasmic and Endoplasmic reticulum staining. The nuclear stain is DAPI (blue). Negative control: Unimmunized goat IgG (10 µg/mL) followed by Alexa Fluor 488 secondary antibody (2 µg/mL).



### Immunohistochemistry

**Image 2.** ABIN184635 (5ug/ml) staining of paraffin embedded Rat Spleen. Steamed antigen retrieval with citrate buffer pH 6, DAB-staining.



### Flow Cytometry

**Image 3.** (ABIN184635) Flow cytometric analysis of paraformaldehyde fixed A549 cells (blue line), permeabilized with 0.5 % Triton. Primary incubation 1hr (10 µg/mL) followed by Alexa Fluor 488 secondary antibody (1 µg/mL). IgG control: Unimmunized goat IgG (black line) followed by Alexa Fluor 488 secondary antibody.

Please check the [product details page](#) for more images. Overall 4 images are available for ABIN184635.