

Datasheet for ABIN184636
anti-MTM1 antibody (C-Term)

5 Images

[Go to Product page](#)

Overview

Quantity:	100 µg
Target:	MTM1
Binding Specificity:	C-Term
Reactivity:	Human, Mouse
Host:	Goat
Clonality:	Polyclonal
Conjugate:	This MTM1 antibody is un-conjugated
Application:	Western Blotting (WB), ELISA, Immunohistochemistry (IHC)

Product Details

Purpose:	MTM1
Immunogen:	Peptide with sequence C-SSPSQMMPHVQTHF, from the C Terminus of the protein sequence according to NP_000243.1.
Sequence:	SSPSQMMPHV QTHF
Isotype:	IgG
Cross-Reactivity:	Cow, Dog, Human, Mouse
Purification:	Purified from goat serum by ammonium sulphate precipitation followed by antigen affinity chromatography using the immunizing peptide.
Grade:	Verified

Target Details

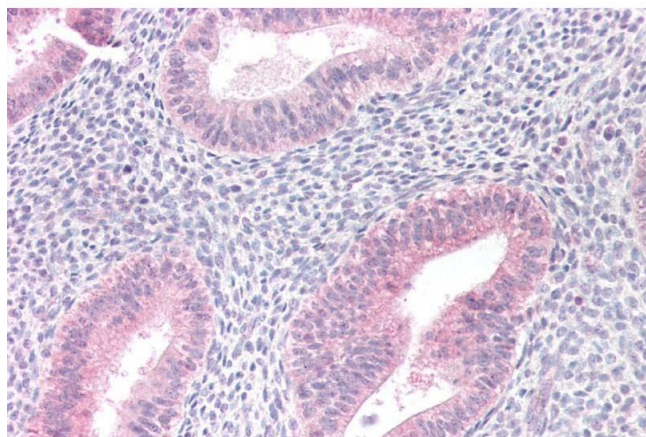
Target:	MTM1
Alternative Name:	MTM1 (MTM1 Products)
Background:	MTM1, myotubular myopathy 1, CNM, MTMX, XLMTM, myotubularin, myotubularin 1
Gene ID:	4534
NCBI Accession:	NP_000243
Pathways:	Inositol Metabolic Process , Skeletal Muscle Fiber Development

Application Details

Application Notes:	Immunohistochemistry: Paraffin embedded Human Uterus. Recommended concentration: 10 µg/mL. Western Blot: Approx 70 kDa band observed in lysates of Human and Mouse Skeletal Muscle and of cell line HepG2 (calculated MW of 69.9 kDa according to NP_000243.1 and 69.6 kDa according to Mouse NP_001157662.1). Recommended concentration: 1-3 µg/mL. Primary Peptide ELISA: antibody detection limit dilution 1:16000.
Restrictions:	For Research Use only

Handling

Format:	Liquid
Concentration:	0.5 mg/mL
Buffer:	Supplied at 0.5 mg/mL in Tris saline, 0.02 % sodium azide, pH 7.3 with 0.5 % bovine serum albumin.
Preservative:	Sodium azide
Precaution of Use:	This product contains Sodium azide: a POISONOUS AND HAZARDOUS SUBSTANCE which should be handled by trained staff only.
Handling Advice:	Minimize freezing and thawing.
Storage:	-20 °C
Storage Comment:	Aliquot and store at -20°C, with minimal freeze/thawing. A working aliquot may be refrigerated at 4°C for a few weeks and still remain viable.

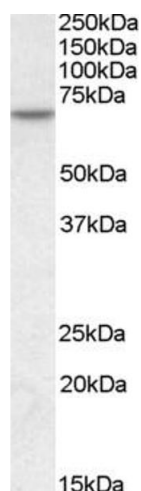


Immunohistochemistry

Image 1. ABIN184636 (10µg/ml) staining of paraffin embedded Human Uterus. Steamed antigen retrieval with citrate buffer pH 6, AP-staining.



Image 2. ABIN184636 (0.3 µg/mL) staining of HepG2 lysate (35 µg protein in RIPA buffer). Primary incubation was 1 hour. Detected by chemiluminescence.



Western Blotting

Image 3. ABIN184636 (1µg/ml) staining of Human Skeletal Muscle lysate (35µg protein in RIPA buffer). Detected by chemiluminescence.

Please check the [product details page](#) for more images. Overall 5 images are available for ABIN184636.