

Datasheet for ABIN1846367
anti-WHSC2 antibody (AA 280-511)[Go to Product page](#)

7 Images

Overview

Quantity:	100 µL
Target:	WHSC2
Binding Specificity:	AA 280-511
Reactivity:	Human, Rat
Host:	Mouse
Clonality:	Monoclonal
Conjugate:	This WHSC2 antibody is un-conjugated
Application:	Western Blotting (WB), ELISA, Immunohistochemistry (IHC), Flow Cytometry (FACS), Immunofluorescence (fixed cells) (IF/ICC)

Product Details

Immunogen:	Purified recombinant fragment of human WHSC2 (AA: 280-511) expressed in E. coli.
Isotype:	IgG2b
Purification:	Purified antibody

Target Details

Target:	WHSC2
Alternative Name:	WHSC2 (WHSC2 Products)
Background:	This gene is expressed ubiquitously with higher levels in fetal than in adult tissues. It encodes a protein sharing 93% sequence identity with the mouse protein. Wolf-Hirschhorn syndrome (WHS) is a malformation syndrome associated with a hemizygous deletion of the distal short

Target Details

arm of chromosome 4. This gene is mapped to the 165 kb WHS critical region, and may play a role in the phenotype of the WHS or Pitt-Rogers-Danks syndrome. The encoded protein is found to be capable of reacting with HLA-A2-restricted and tumor-specific cytotoxic T lymphocytes, suggesting a target for use in specific immunotherapy for a large number of cancer patients. This protein has also been shown to be a member of the NELF (negative elongation factor) protein complex that participates in the regulation of RNA polymerase II transcription elongation.

Molecular Weight: 57.3 kDa

Gene ID: 7469

Pathways: [Chromatin Binding](#)

Application Details

Application Notes: Optimal working dilution should be determined by the investigator.

Restrictions: For Research Use only

Handling

Format: Liquid

Concentration: 1.0 mg/mL

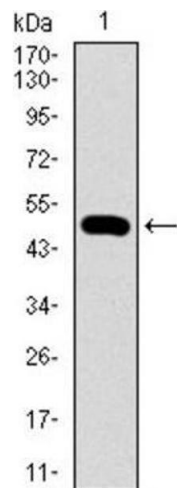
Buffer: PBS with 0.05 % sodium azide and 0.5 % protein stabilizer.

Preservative: Sodium azide

Precaution of Use: This product contains Sodium azide: a POISONOUS AND HAZARDOUS SUBSTANCE which should be handled by trained staff only.

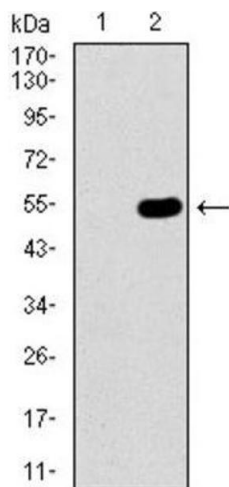
Storage: -20 °C

Storage Comment: Aliquot and store at -20 °C. Avoid repeated freeze/thaw cycles.



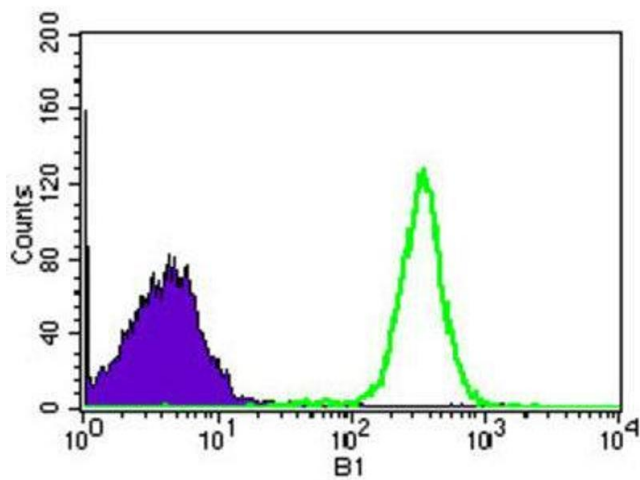
Western Blotting

Image 1.



Western Blotting

Image 2.



Flow Cytometry

Image 3.

Please check the [product details page](#) for more images. Overall 7 images are available for ABIN1846367.