

Datasheet for ABIN184638
anti-DUSP1 antibody (C-Term)

5 Images

[Go to Product page](#)

Overview

Quantity:	100 µg
Target:	DUSP1
Binding Specificity:	C-Term
Reactivity:	Human
Host:	Goat
Clonality:	Polyclonal
Conjugate:	This DUSP1 antibody is un-conjugated
Application:	Western Blotting (WB), ELISA, Immunohistochemistry (IHC)

Product Details

Purpose:	DUSP1
Immunogen:	Peptide with sequence SYLQSPITTSPSC, from the C Terminus of the protein sequence according to NP_004408.1.
Sequence:	SYLQSPITTS PSC
Isotype:	IgG
Cross-Reactivity:	Cow, Dog, Human, Mouse, Rat
Purification:	Purified from goat serum by ammonium sulphate precipitation followed by antigen affinity chromatography using the immunizing peptide.
Grade:	Verified

Target Details

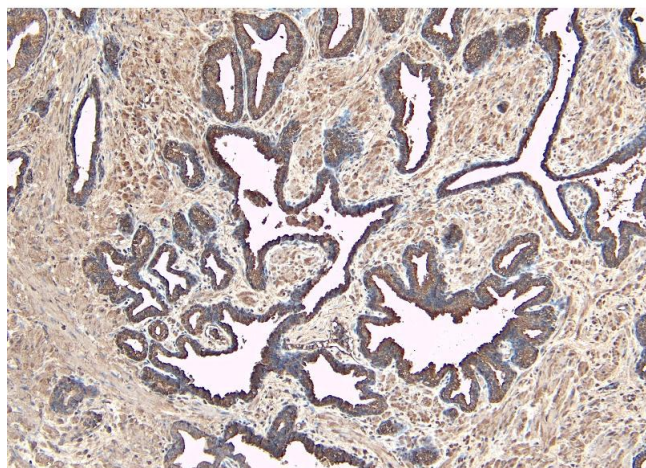
Target:	DUSP1
Alternative Name:	DUSP1 (DUSP1 Products)
Background:	DUSP1, dual specificity phosphatase 1, HVH1, CL100, MKP-1, PTPN10, serine/threonine specific protein phosphatase, MKP1
Gene ID:	1843, 19252
NCBI Accession:	NP_004408

Application Details

Application Notes:	Immunohistochemistry: Paraffin embedded Human Prostate. Recommended concentration: 8 µg/mL. Western Blot: Approx 40 kDa band observed in lysates of HeLa (calculated MW of 39.3 kDa according to NP_004408.1). Recommended concentration: 1-3 µg/mL. Primary incubation was 1 hour. Preliminary testing was unsuccessful on Rat Lung for this particular batch. Peptide ELISA: antibody detection limit dilution 1:64000.
Restrictions:	For Research Use only

Handling

Format:	Liquid
Concentration:	0.5 mg/mL
Buffer:	Supplied at 0.5 mg/mL in Tris saline, 0.02 % sodium azide, pH 7.3 with 0.5 % bovine serum albumin.
Preservative:	Sodium azide
Precaution of Use:	This product contains Sodium azide: a POISONOUS AND HAZARDOUS SUBSTANCE which should be handled by trained staff only.
Handling Advice:	Minimize freezing and thawing.
Storage:	-20 °C
Storage Comment:	Aliquot and store at -20°C, with minimal freeze/thawing. A working aliquot may be refrigerated at 4°C for a few weeks and still remain viable.



Immunohistochemistry

Image 1. ABIN184638 (8µg/ml) staining of paraffin embedded Human Prostate. Heat induced antigen retrieval with citrate buffer pH 6, HRP-staining.

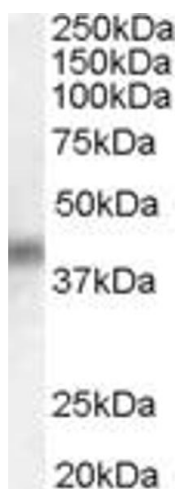
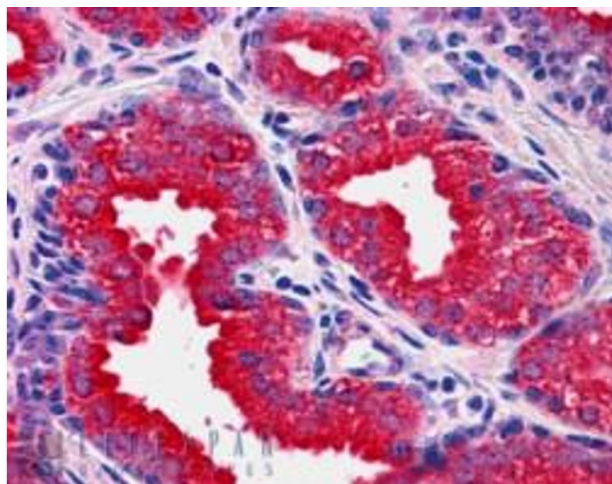


Image 2. ABIN184638 (0.3µg/ml) staining of HeLa lysate (35µg protein in RIPA buffer). Primary incubation was 1 hour. Detected by chemiluminescence.



Immunohistochemistry

Image 3. ABIN184638 (3.8µg/ml) staining of paraffin embedded Human Prostate. Steamed antigen retrieval with citrate buffer pH 6, AP-staining.

Please check the [product details page](#) for more images. Overall 5 images are available for ABIN184638.