

Datasheet for ABIN1846382

anti-CCL2 antibody

10 Images

[Go to Product page](#)

Overview

Quantity:	100 µL
Target:	CCL2
Reactivity:	Human, Mouse, Monkey
Host:	Mouse
Clonality:	Monoclonal
Conjugate:	This CCL2 antibody is un-conjugated
Application:	Western Blotting (WB), Immunohistochemistry (IHC), ELISA, Immunofluorescence (fixed cells) (IF/ICC), Flow Cytometry (FACS)

Product Details

Immunogen:	Purified recombinant fragment of human CCL2 expressed in E. Coli.
Isotype:	IgG1
Purification:	Purified antibody

Target Details

Target:	CCL2
Alternative Name:	CCL2 (CCL2 Products)
Background:	<p>This gene is one of several cytokine genes clustered on the q-arm of chromosome 17. Cytokines are a family of secreted proteins involved in immunoregulatory and inflammatory processes. The protein encoded by this gene is structurally related to the CXC subfamily of cytokines. Members of this subfamily are characterized by two cysteines separated by a single</p>

Target Details

amino acid. This cytokine displays chemotactic activity for monocytes and basophils but not for neutrophils or eosinophils. It has been implicated in the pathogenesis of diseases characterized by monocytic infiltrates, like psoriasis, rheumatoid arthritis and atherosclerosis. It binds to chemokine receptors CCR2 and CCR4.

Molecular Weight: 11 kDa

Gene ID: 6347

UniProt: [P13500](#)

Pathways: [Cellular Response to Molecule of Bacterial Origin](#), [Positive Regulation of Immune Effector Process](#), [ER-Nucleus Signaling](#), [Unfolded Protein Response](#), [The Global Phosphorylation Landscape of SARS-CoV-2 Infection](#)

Application Details

Application Notes: Optimal working dilution should be determined by the investigator.

Restrictions: For Research Use only

Handling

Format: Liquid

Concentration: 1.0 mg/mL

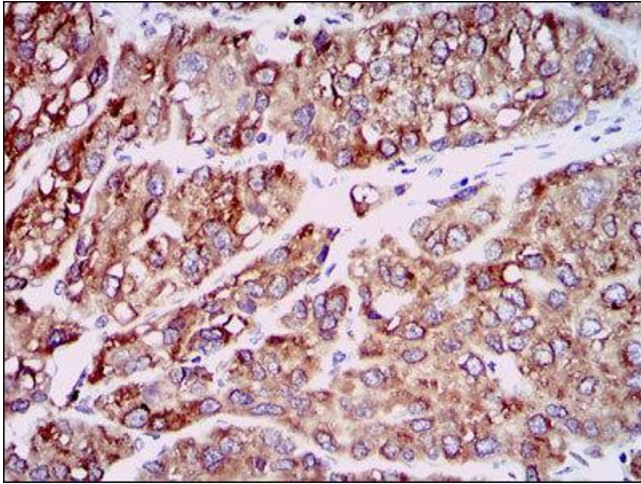
Buffer: PBS with 0.05 % sodium azide and 0.5 % protein stabilizer.

Preservative: Sodium azide

Precaution of Use: This product contains Sodium azide: a POISONOUS AND HAZARDOUS SUBSTANCE which should be handled by trained staff only.

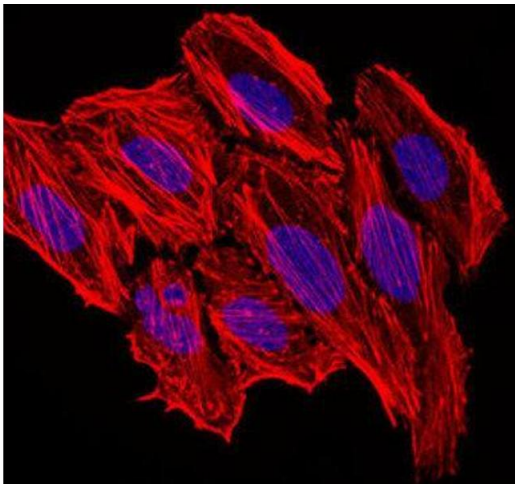
Storage: -20 °C

Storage Comment: Aliquot and store at -20 °C. Avoid repeated freeze/thaw cycles.



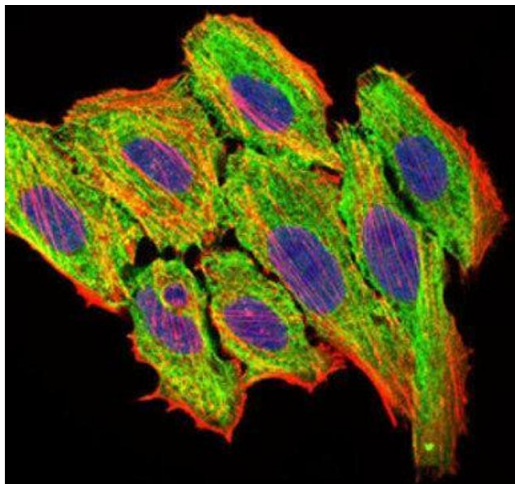
Immunohistochemistry

Image 1.



Immunocytochemistry

Image 2.



Immunocytochemistry

Image 3.

Please check the [product details page](#) for more images. Overall 10 images are available for ABIN1846382.