

Datasheet for ABIN1846411

**anti-RPA1 antibody****8** Images[Go to Product page](#)

## Overview

Quantity:	100 µL
Target:	RPA1
Reactivity:	Human, Monkey
Host:	Mouse
Clonality:	Monoclonal
Conjugate:	This RPA1 antibody is un-conjugated
Application:	Western Blotting (WB), ELISA, Immunohistochemistry (IHC), Flow Cytometry (FACS), Immunofluorescence (fixed cells) (IF/ICC)

## Product Details

Immunogen:	Purified recombinant fragment of human RPA1 expressed in E. Coli.
Isotype:	IgG1
Purification:	Purified antibody

## Target Details

Target:	RPA1
Alternative Name:	RPA1 ( <a href="#">RPA1 Products</a> )
Background:	This gene Plays an essential role in several cellular processes in DNA metabolism including replication, recombination and DNA repair. Binds and subsequently stabilizes single-stranded DNA intermediates and thus prevents complementary DNA from reannealing.
Molecular Weight:	68.1 kDa

## Target Details

Gene ID:	6117
UniProt:	<a href="#">O95602</a>
Pathways:	<a href="#">Telomere Maintenance</a> , <a href="#">DNA Damage Repair</a> , <a href="#">Mitotic G1-G1/S Phases</a> , <a href="#">DNA Replication</a> , <a href="#">Chromatin Binding</a> , <a href="#">Synthesis of DNA</a>

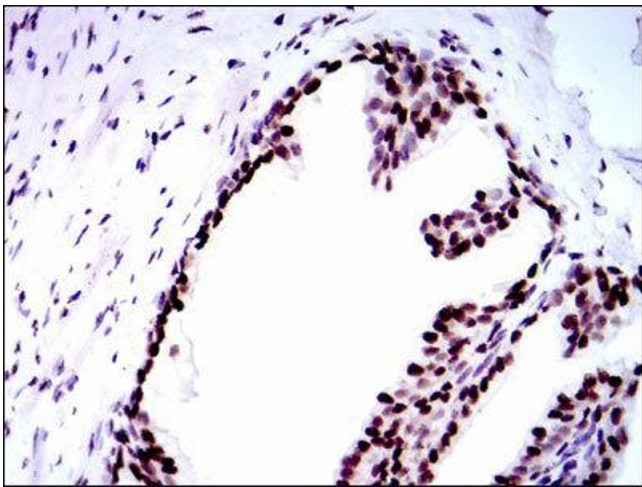
## Application Details

Application Notes:	Optimal working dilution should be determined by the investigator.
Restrictions:	For Research Use only

## Handling

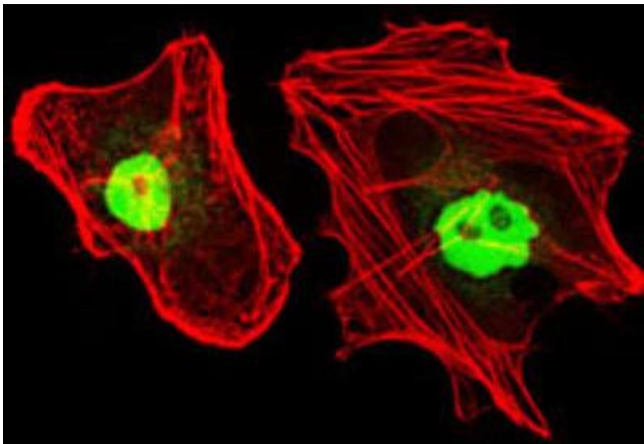
Format:	Liquid
Concentration:	1.0 mg/mL
Buffer:	PBS with 0.05 % sodium azide and 0.5 % protein stabilizer.
Preservative:	Sodium azide
Precaution of Use:	This product contains Sodium azide: a POISONOUS AND HAZARDOUS SUBSTANCE which should be handled by trained staff only.
Storage:	-20 °C
Storage Comment:	Aliquot and store at -20 °C. Avoid repeated freeze/thaw cycles.

## Images



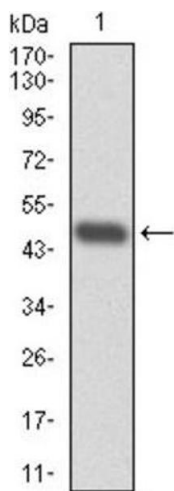
### Immunohistochemistry

Image 1.



**Immunocytochemistry**

**Image 2.**



**Western Blotting**

**Image 3.**

Please check the [product details page](#) for more images. Overall 8 images are available for ABIN1846411.