

Datasheet for ABIN184642
anti-DOK3 antibody (C-Term)[Go to Product page](#)

4 Images

Overview

Quantity:	100 µg
Target:	DOK3
Binding Specificity:	C-Term
Reactivity:	Human
Host:	Goat
Clonality:	Polyclonal
Conjugate:	This DOK3 antibody is un-conjugated
Application:	Western Blotting (WB), ELISA

Product Details

Purpose:	DOK3
Immunogen:	TRERRKGPAPCDRP
Sequence:	TRERRKGPAP CDRP
Isotype:	IgG
Cross-Reactivity:	Cow, Human, Mouse, Rat
Purification:	Purified from goat serum by ammonium sulphate precipitation followed by antigen affinity chromatography using the immunizing peptide.
Grade:	Verified

Target Details

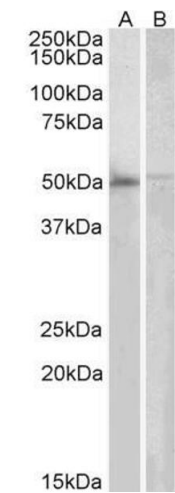
Target:	DOK3
Alternative Name:	DOK3 (DOK3 Products)
Background:	DOK3, Docking Protein 3, FLJ22570, FLJ39939, DOKL, FLJ39939, Dok-like protein
Gene ID:	79930, 27261
NCBI Accession:	NP_079148

Application Details

Application Notes:	Western Blot: Approx 50 kDa band observed in Human Bone marrow and Human Peripheral Blood Mononucleocytes lysates (calculated MW of 50.3 kDa according to NP_079148.2). Recommended concentration: 2-6 µg/mL. Peptide ELISA: antibody detection limit dilution 1:128000.
Restrictions:	For Research Use only

Handling

Format:	Liquid
Concentration:	0.5 mg/mL
Buffer:	Supplied at 0.5 mg/mL in Tris saline, 0.02 % sodium azide, pH 7.3 with 0.5 % bovine serum albumin.
Preservative:	Sodium azide
Precaution of Use:	This product contains Sodium azide: a POISONOUS AND HAZARDOUS SUBSTANCE which should be handled by trained staff only.
Handling Advice:	Minimize freezing and thawing.
Storage:	-20 °C
Storage Comment:	Aliquot and store at -20°C, with minimal freeze/thawing. A working aliquot may be refrigerated at 4°C for a few weeks and still remain viable.



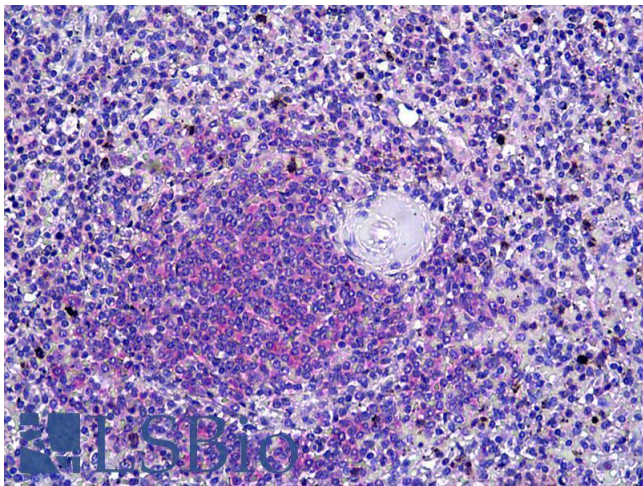
Western Blotting

Image 1. ABIN184642 (2µg/ml) staining of Human Bone Marrow (A) and PBL (B) lysates (35µg protein in RIPA buffer). Primary incubation was 1 hour. Detected by chemiluminescence.



Western Blotting

Image 2. ABIN184642 staining (1µg/ml) of Human PBMC lysate (RIPA buffer, 35µg total protein per lane). Primary incubated for 1 hour. Detected by western blot using chemiluminescence.



Immunohistochemistry

Image 3. ABIN184642 (6.125µg/ml) staining of paraffin embedded Human Spleen. Steamed antigen retrieval with citrate buffer Ph 6, AP-staining. This data is from a previous batch, not on sale.

Please check the [product details page](#) for more images. Overall 4 images are available for ABIN184642.