

Datasheet for ABIN184646 anti-PPP2CB antibody (C-Term)



[Go to Product page](#)

5 Images

Overview

| | |
|----------------------|--|
| Quantity: | 100 µg |
| Target: | PPP2CB |
| Binding Specificity: | C-Term |
| Reactivity: | Human, Mouse, Rat, Pig |
| Host: | Goat |
| Clonality: | Polyclonal |
| Conjugate: | This PPP2CB antibody is un-conjugated |
| Application: | Western Blotting (WB), ELISA, Immunohistochemistry (IHC) |

Product Details

| | |
|-------------------|---|
| Purpose: | PPP2CA / PPP2CB |
| Immunogen: | Peptide with sequence C-EPHVTRRTPDYFL, from the C Terminus of the protein sequence according to NP_002706.1, NP_004147.1. |
| Sequence: | EPHVTRRTPD YFL |
| Isotype: | IgG |
| Specificity: | Two variants NP_001009552.1 and NP_004147.1 represent identical protein. |
| Cross-Reactivity: | Cow, Dog, Human, Mouse, Pig, Rat |
| Purification: | Purified from goat serum by ammonium sulphate precipitation followed by antigen affinity chromatography using the immunizing peptide. |
| Grade: | Verified |

Target Details

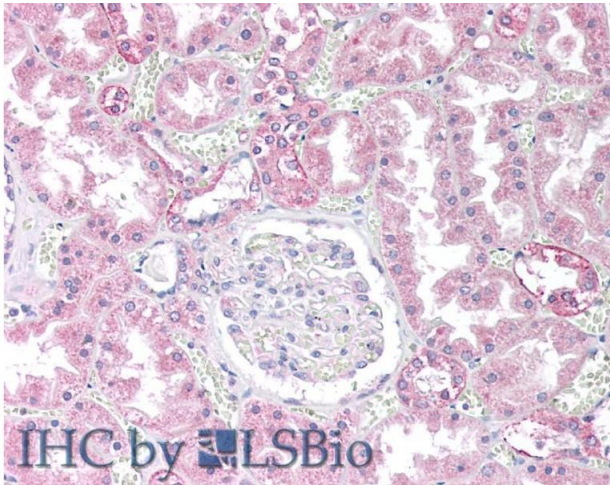
| | |
|-------------------|---|
| Target: | PPP2CB |
| Alternative Name: | PPP2CA / PPP2CB (PPP2CB Products) |
| Background: | PPP2CA, protein phosphatase 2 (formerly 2A), catalytic subunit, alpha isoform, PP2Ac, PP2CA, RP-C, PP2A-alpha, protein phosphatase 2, catalytic subunit, alpha isoform, replication protein C, serine/threonine protein phosphatase 2A, catalytic subunit, alph |
| Gene ID: | 5515, 5516, 19052 |
| NCBI Accession: | NP_002706 , NP_004147 |
| Pathways: | Mitotic G1-G1/S Phases , Hepatitis C , Toll-Like Receptors Cascades |

Application Details

| | |
|--------------------|--|
| Application Notes: | Immunohistochemistry: Paraffin embedded Human Kidney and Thyroid. Recommended concentration: 10 µg/mL. Western Blot: Approx 36 kDa band observed in Human Cerebellum and in Mouse, Rat and Pig Brain lysates (calculated MW of 35.6 kDa according to Human NP_002706.1). Recommended concentration: 1-3 µg/mL. Primary incubation was 1 hour. Peptide ELISA: antibody detection limit dilution 1:128000. |
| Restrictions: | For Research Use only |

Handling

| | |
|--------------------|--|
| Format: | Liquid |
| Concentration: | 0.5 mg/mL |
| Buffer: | Supplied at 0.5 mg/mL in Tris saline, 0.02 % sodium azide, pH 7.3 with 0.5 % bovine serum albumin. |
| Preservative: | Sodium azide |
| Precaution of Use: | This product contains Sodium azide: a POISONOUS AND HAZARDOUS SUBSTANCE which should be handled by trained staff only. |
| Handling Advice: | Minimize freezing and thawing. |
| Storage: | -20 °C |
| Storage Comment: | Aliquot and store at -20°C, with minimal freeze/thawing. A working aliquot may be refrigerated at 4°C for a few weeks and still remain viable. |

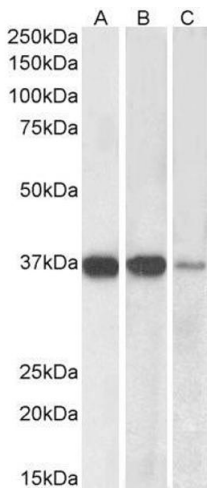


Immunohistochemistry

Image 1. ABIN184646 (10µg/ml) staining of paraffin embedded Human Kidney. Steamed antigen retrieval with citrate buffer pH 6, AP-staining.



Image 2. ABIN184646 (0.05µg/ml) staining of Human Cerebellum lysate (35µg protein in RIPA buffer). Primary incubation was 1 hour. Detected by chemiluminescence.



Western Blotting

Image 3. ABIN184646 (0.03µg/ml) staining of Mouse (A), Rat (B) and Pig (C) Brain lysate (35µg protein in RIPA buffer). Detected by chemiluminescence.

Please check the [product details page](#) for more images. Overall 5 images are available for ABIN184646.