

Datasheet for ABIN1846463
anti-MEF2C antibody (AA 1-125)



[Go to Product page](#)

10 Images

Overview

Quantity:	100 µL
Target:	MEF2C
Binding Specificity:	AA 1-125
Reactivity:	Human, Mouse
Host:	Mouse
Clonality:	Monoclonal
Conjugate:	This MEF2C antibody is un-conjugated
Application:	Western Blotting (WB), ELISA, Immunohistochemistry (IHC), Flow Cytometry (FACS)

Product Details

Immunogen:	Purified recombinant fragment of human MEF2C (AA: 1-125) expressed in E. Coli.
Isotype:	IgG1
Purification:	Purified antibody

Target Details

Target:	MEF2C
Alternative Name:	MEF2C (MEF2C Products)
Background:	This locus encodes a member of the MADS box transcription enhancer factor 2 (MEF2) family of proteins, which play a role in myogenesis. The encoded protein, MEF2 polypeptide C, has both trans-activating and DNA binding activities. This protein may play a role in maintaining the differentiated state of muscle cells. Mutations and deletions at this locus have been associated

Target Details

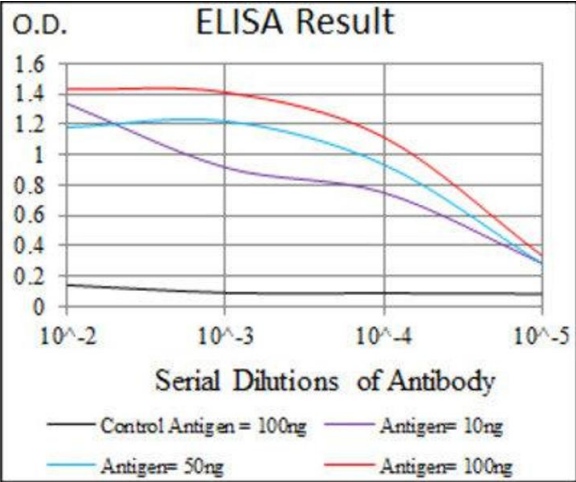
	with severe mental retardation, stereotypic movements, epilepsy, and cerebral malformation. Alternatively spliced transcript variants have been described.
Molecular Weight:	51.2 kDa
Gene ID:	4208
UniProt:	Q06413
Pathways:	Neurotrophin Signaling Pathway , Activation of Innate immune Response , Cellular Response to Molecule of Bacterial Origin , Carbohydrate Homeostasis , Chromatin Binding , Regulation of Muscle Cell Differentiation , Skeletal Muscle Fiber Development , Toll-Like Receptors Cascades , BCR Signaling

Application Details

Application Notes:	Optimal working dilution should be determined by the investigator.
Restrictions:	For Research Use only

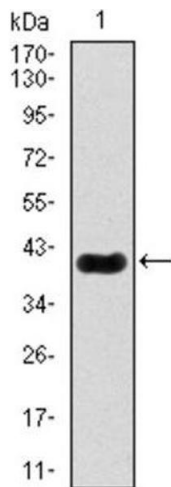
Handling

Format:	Liquid
Concentration:	1.0 mg/mL
Buffer:	PBS with 0.05 % sodium azide and 0.5 % protein stabilizer.
Preservative:	Sodium azide
Precaution of Use:	This product contains Sodium azide: a POISONOUS AND HAZARDOUS SUBSTANCE which should be handled by trained staff only.
Storage:	-20 °C
Storage Comment:	Aliquot and store at -20 °C. Avoid repeated freeze/thaw cycles.



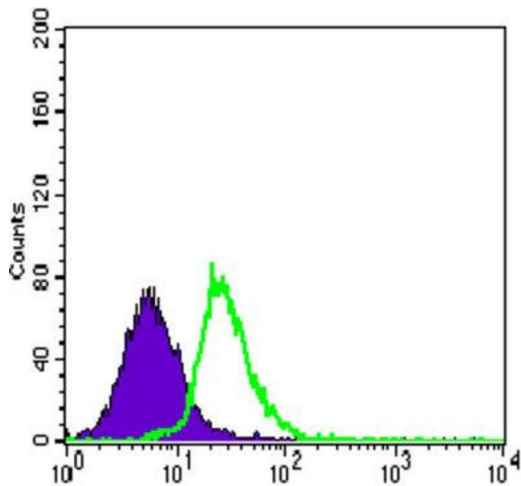
ELISA

Image 1.



Western Blotting

Image 2.



Flow Cytometry

Image 3.

Please check the [product details page](#) for more images. Overall 10 images are available for ABIN1846463.