

Datasheet for ABIN1846469
anti-WDR66 antibody (AA 1-250)



[Go to Product page](#)

4 Images

Overview

Quantity:	100 µL
Target:	WDR66
Binding Specificity:	AA 1-250
Reactivity:	Human
Host:	Mouse
Clonality:	Monoclonal
Conjugate:	This WDR66 antibody is un-conjugated
Application:	ELISA, Western Blotting (WB), Flow Cytometry (FACS)

Product Details

Immunogen:	Purified recombinant fragment of human WDR66 (AA: 1-250) expressed in E. coli.
Isotype:	IgG1
Purification:	Purified antibody

Target Details

Target:	WDR66
Alternative Name:	WDR66 (WDR66 Products)
Background:	This protein encoded by this gene belongs to the WD repeat-containing family of proteins, which function in the formation of protein-protein complexes in a variety of biological pathways. This family member appears to function in the determination of mean platelet volume (MPV), and polymorphisms in this gene have been associated with variance in

Target Details

	MPV.Alternative splicing of this gene results in multiple transcript variants.
Molecular Weight:	130 kDa
Gene ID:	144406
UniProt:	Q8TBY9

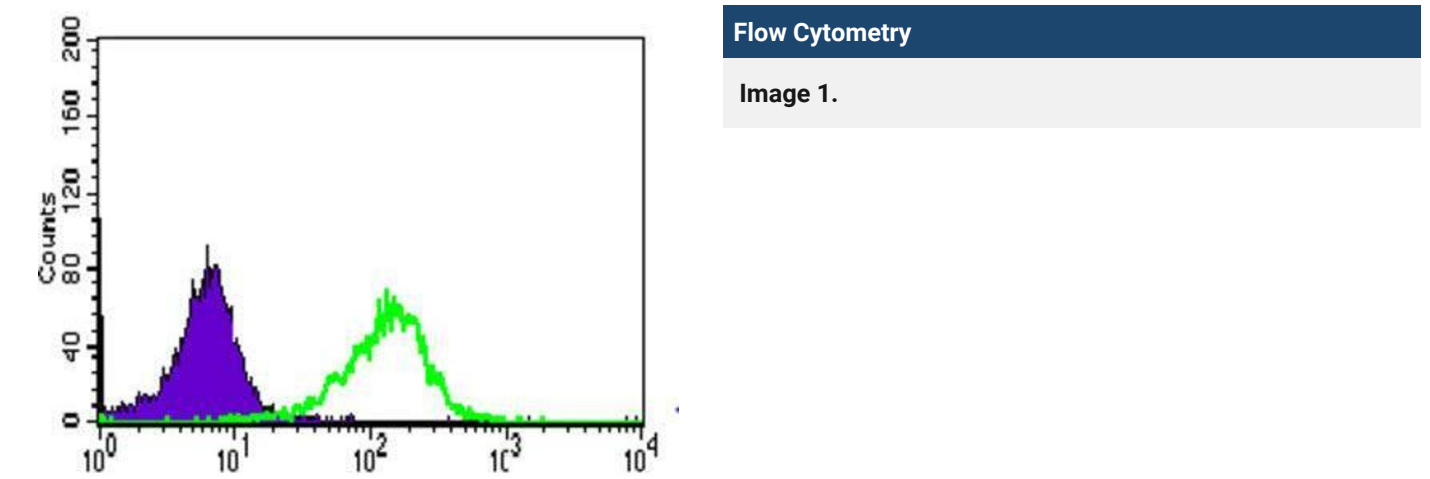
Application Details

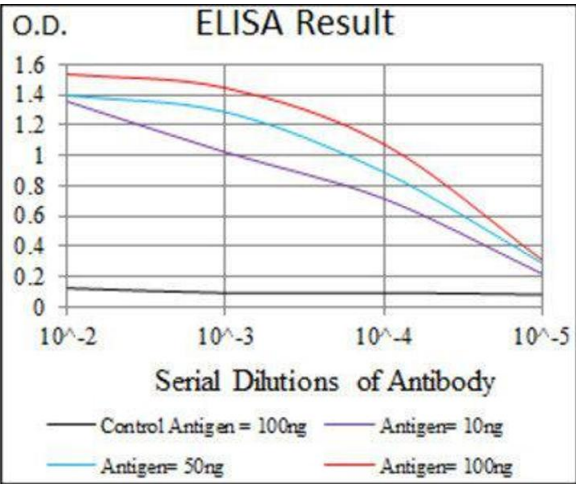
Application Notes:	Optimal working dilution should be determined by the investigator.
Restrictions:	For Research Use only

Handling

Format:	Liquid
Concentration:	1.0 mg/mL
Buffer:	PBS with 0.05 % sodium azide and 0.5 % protein stabilizer.
Preservative:	Sodium azide
Precaution of Use:	This product contains Sodium azide: a POISONOUS AND HAZARDOUS SUBSTANCE which should be handled by trained staff only.
Storage:	-20 °C
Storage Comment:	Aliquot and store at -20 °C. Avoid repeated freeze/thaw cycles.

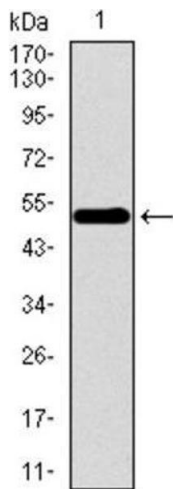
Images





ELISA

Image 2.



Western Blotting

Image 3.

Please check the [product details page](#) for more images. Overall 4 images are available for ABIN1846469.