

Datasheet for ABIN184647
anti-PPP2R5E antibody (C-Term)[Go to Product page](#)

2 Images

Overview

Quantity:	100 µg
Target:	PPP2R5E
Binding Specificity:	C-Term
Reactivity:	Mouse, Human, Rat
Host:	Goat
Clonality:	Polyclonal
Conjugate:	This PPP2R5E antibody is un-conjugated
Application:	Western Blotting (WB), ELISA

Product Details

Purpose:	PPP2R5E
Immunogen:	Peptide with sequence C-LKRGLRRDGIPT, from the C Terminus of the protein sequence according to NP_006237.1.
Sequence:	LKRGLRRDGI IPT
Isotype:	IgG
Cross-Reactivity:	Cow, Dog, Human, Mouse, Rat
Purification:	Purified from goat serum by ammonium sulphate precipitation followed by antigen affinity chromatography using the immunizing peptide.
Grade:	Verified

Target Details

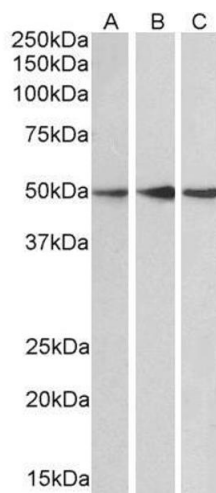
Target:	PPP2R5E
Alternative Name:	PPP2R5E (PPP2R5E Products)
Background:	PPP2R5E, protein phosphatase 2, regulatory subunit B (B56), epsilon isoform, PP2A, B subunit, B' epsilon isoform, PP2A, B subunit, R5 epsilon isoform, PP2A, B subunit, B56 epsilon isoform, PP2A, B subunit, PR61 epsilon isoform, Serine/threonine protein ph
Gene ID:	5529
NCBI Accession:	NP_006237
Pathways:	PI3K-Akt Signaling

Application Details

Application Notes:	Western Blot: Approx 50 kDa band observed in Human (Cerebellum), Mouse and Rat Brain lysates (calculated MW of 54.7 kDa according to Human NP_001269108.1 and Mouse NP_036154.1 and 50.4 kDa according to Rat NP_001100210.1). Recommended concentration: 0.1-0.3 Peptide ELISA: antibody detection limit dilution 1:16000.
Restrictions:	For Research Use only

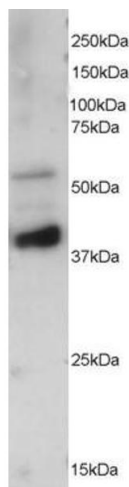
Handling

Format:	Liquid
Concentration:	0.5 mg/mL
Buffer:	Supplied at 0.5 mg/mL in Tris saline, 0.02 % sodium azide, pH 7.3 with 0.5 % bovine serum albumin.
Preservative:	Sodium azide
Precaution of Use:	This product contains Sodium azide: a POISONOUS AND HAZARDOUS SUBSTANCE which should be handled by trained staff only.
Handling Advice:	Minimize freezing and thawing.
Storage:	-20 °C
Storage Comment:	Aliquot and store at -20°C, with minimal freeze/thawing. A working aliquot may be refrigerated at 4°C for a few weeks and still remain viable.



Western Blotting

Image 1. ABIN184647 (0.1µg/ml) staining of Human Cerebellum (A), Mouse (B) and Rat (C) Brain lysate (35µg protein in RIPA buffer). Primary incubation was 1 hour. Detected by chemiluminescence.



Western Blotting

Image 2. ABIN184647 staining (0.5µg/ml) of mouse brain extracts (RIPA buffer, 35µg total protein per lane). Primary incubated for 1 hour. Detected by western blot using chemiluminescence.