



Datasheet for ABIN184648

anti-PPP2R5D antibody (C-Term)[Go to Product page](#)

5 Images

Overview

Quantity:	100 µg
Target:	PPP2R5D
Binding Specificity:	C-Term
Reactivity:	Human, Mouse, Rat
Host:	Goat
Clonality:	Polyclonal
Conjugate:	This PPP2R5D antibody is un-conjugated
Application:	Western Blotting (WB), ELISA, Immunofluorescence (IF), Flow Cytometry (FACS)

Product Details

Purpose:	PPP2R5D
Immunogen:	Peptide with sequence C-KRAEEFLTASQEAL, from the C Terminus of the protein sequence according to NP_006236.1, NP_851307.1, NP_851308.1.
Sequence:	KRAEEFLTAS QEAL
Isotype:	IgG
Specificity:	This antibody is expected to recognise reported isoforms (NP_006236.1 (iso 1), NP_851307.1, (iso 2) NP_851308.1) (iso 3) and NP_001257405.1 (iso 4).
Cross-Reactivity:	Cow, Dog, Human, Mouse, Pig, Rat
Purification:	Purified from goat serum by ammonium sulphate precipitation followed by antigen affinity chromatography using the immunizing peptide.

Product Details

Grade: Verified

Target Details

Target: PPP2R5D

Alternative Name: PPP2R5D ([PPP2R5D Products](#))

Background: PPP2R5D, MGC2134, MGC8949, protein phosphatase 2, regulatory subunit B (B56), delta isoform, PP2A, B subunit, B' delta isoform, PP2A, B subunit, R5 delta isoform, PP2A, B subunit, B56 delta isoform, PP2A, B subunit, PR61 delta isoform, Serine/threonine pr

Gene ID: 5528

NCBI Accession: [NP_006236](#), [NP_851307](#), [NP_851308](#)

Pathways: [PI3K-Akt Signaling](#), [Activation of Innate immune Response](#), [Toll-Like Receptors Cascades](#)

Application Details

Application Notes: Western Blot: Approx 70 kDa band observed in lysates of cell lines A431, HepG2 and Jurkat, and in Human Cerebellum lysates, approx. 65-70 kDa in lysates of cell line NIH3T3, and approx. 75 kDa in Rat Brain lysates, (calculated MW of 70 kDa according to Huma Peptide ELISA: antibody detection limit dilution 1:20000.

Comment: **Immunofluorescence:** Strong expression of the protein seen in the cytoplasm and nuclei of U2OS cells. Recommended concentration: 10µg/ml.

Flow Cytometry: Flow cytometric analysis of A431 cells. Recommended concentration

Restrictions: For Research Use only

Handling

Format: Liquid

Concentration: 0.5 mg/mL

Buffer: Supplied at 0.5 mg/mL in Tris saline, 0.02 % sodium azide, pH 7.3 with 0.5 % bovine serum albumin.

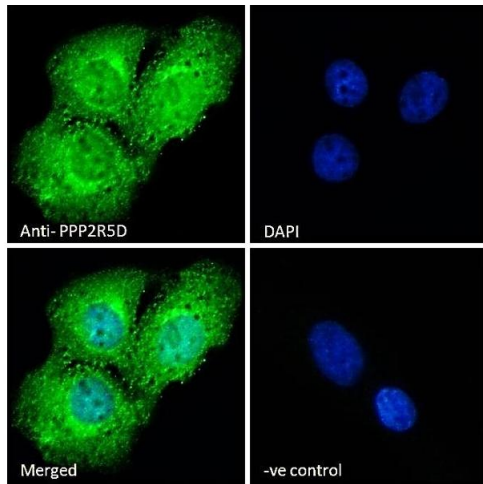
Preservative: Sodium azide

Precaution of Use: This product contains Sodium azide: a POISONOUS AND HAZARDOUS SUBSTANCE which should be handled by trained staff only.

Handling

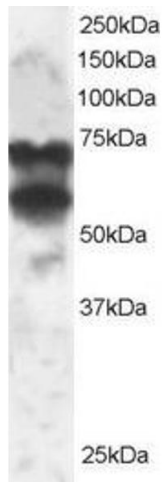
Handling Advice:	Minimize freezing and thawing.
Storage:	-20 °C
Storage Comment:	Aliquot and store at -20°C, with minimal freeze/thawing. A working aliquot may be refrigerated at 4°C for a few weeks and still remain viable.

Images



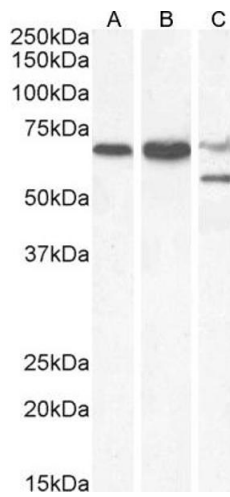
Immunofluorescence

Image 1. (ABIN184648) Immunofluorescence analysis of paraformaldehyde fixed U2OS cells, permeabilized with 0.15 % Triton. Primary incubation 1hr (10 µg/mL) followed by Alexa Fluor 488 secondary antibody (2 µg/mL), showing cytoplasmic and nuclear staining. The nuclear stai



Western Blotting

Image 2. ABIN184648 staining (2µg/ml) of 293 lysate (RIPA buffer, 30µg total protein per lane). Primary incubated for 1 hour. Detected by western blot using chemiluminescence.



Western Blotting

Image 3. (ABIN184648) (0.1 µg/mL) staining of A431 (A), Jurkat (B) and HepG2 (C) cell lysate (35 µg protein in RIPA buffer). Detected by chemiluminescence.

Please check the [product details page](#) for more images. Overall 5 images are available for ABIN184648.