

Datasheet for ABIN184649
anti-PPP2R5A antibody (C-Term)

3 Images

[Go to Product page](#)

Overview

Quantity:	100 µg
Target:	PPP2R5A
Binding Specificity:	C-Term
Reactivity:	Human
Host:	Goat
Clonality:	Polyclonal
Conjugate:	This PPP2R5A antibody is un-conjugated
Application:	Western Blotting (WB), ELISA, Immunohistochemistry (IHC)

Product Details

Purpose:	PPP2R5A
Immunogen:	Peptide with sequence C-AYNMHSILSNTSAE, from the C Terminus of the protein sequence according to NP_006234.1.
Sequence:	AYNMHSILSN TSAE
Isotype:	IgG
Cross-Reactivity:	Cow, Dog, Human, Pig, Rat
Purification:	Purified from goat serum by ammonium sulphate precipitation followed by antigen affinity chromatography using the immunizing peptide.
Grade:	Verified

Target Details

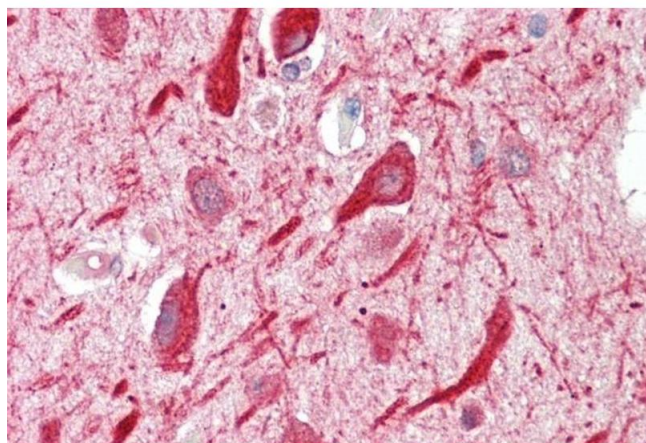
Target:	PPP2R5A
Alternative Name:	PPP2R5A (PPP2R5A Products)
Background:	PPP2R5A, protein phosphatase 2, regulatory subunit B (B56), alpha isoform, MGC131915 , PP2A, B subunit, B' alpha isoform, PP2A, B subunit, B56 alpha isoform, PP2A, B subunit, PR61 alpha isoform, PP2A, B subunit, R5 alpha isoform, serine/threonine protein
Gene ID:	5525
NCBI Accession:	NP_006234
Pathways:	PI3K-Akt Signaling

Application Details

Application Notes:	Immunohistochemistry: Paraffin embedded Human Heart and Brain (Cortex). Recommended concentration: 5 µg/mL. Western Blot: Approx 55 kDa band observed in human heart and skeletal muscle lysate (calculated MW of 56.2 kDa according to NP_006234.1). Recommended for use at 0.5-2 µg/mL. Peptide ELISA: antibody detection limit dilution 1:32000.
Restrictions:	For Research Use only

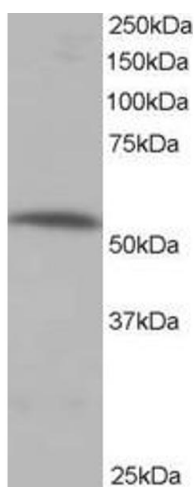
Handling

Format:	Liquid
Concentration:	0.5 mg/mL
Buffer:	Supplied at 0.5 mg/mL in Tris saline, 0.02 % sodium azide, pH 7.3 with 0.5 % bovine serum albumin.
Preservative:	Sodium azide
Precaution of Use:	This product contains Sodium azide: a POISONOUS AND HAZARDOUS SUBSTANCE which should be handled by trained staff only.
Handling Advice:	Minimize freezing and thawing.
Storage:	-20 °C
Storage Comment:	Aliquot and store at -20°C, with minimal freeze/thawing. A working aliquot may be refrigerated at 4°C for a few weeks and still remain viable.



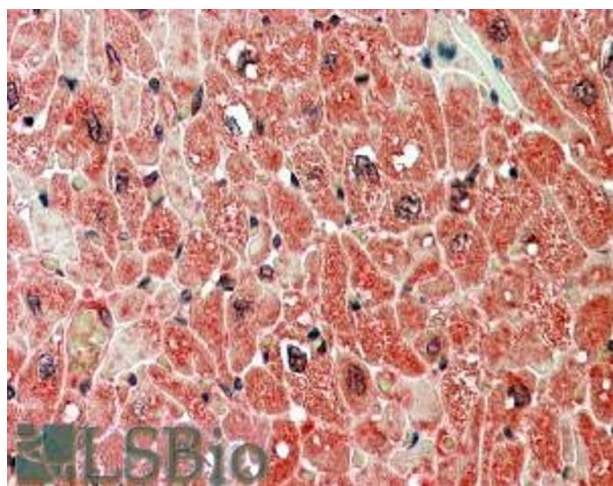
Immunohistochemistry

Image 1. ABIN184649 (5 µg/mL) staining of paraffin embedded Human Cortex. Steamed antigen retrieval with citrate buffer pH 6, AP-staining.



Western Blotting

Image 2. ABIN184649 staining (0.5 µg/ml) of human muscle lysate (RIPA buffer, 35 µg total protein per lane). Primary incubated for 1 hour. Detected by western blot using chemiluminescence.



Immunohistochemistry

Image 3. ABIN184649 (5 µg/ml) staining of paraffin embedded Human Heart. Steamed antigen retrieval with citrate buffer pH 6, AP-staining.