

Datasheet for ABIN184650  
**anti-DUSP16 antibody (N-Term)**[Go to Product page](#)

## 1 Image

## Overview

Quantity:	100 µg
Target:	DUSP16
Binding Specificity:	N-Term
Reactivity:	Human
Host:	Goat
Clonality:	Polyclonal
Conjugate:	This DUSP16 antibody is un-conjugated
Application:	ELISA, Immunohistochemistry (IHC)

## Product Details

Purpose:	DUSP16
Immunogen:	Peptide with sequence AHEMIGTQIVTER-C, from the N Terminus of the protein sequence according to NP_085143.1.
Sequence:	AHEMIGTQIV TER
Isotype:	IgG
Cross-Reactivity:	Cow, Dog, Human, Mouse, Rat
Purification:	Purified from goat serum by ammonium sulphate precipitation followed by antigen affinity chromatography using the immunizing peptide.
Grade:	Verified

## Target Details

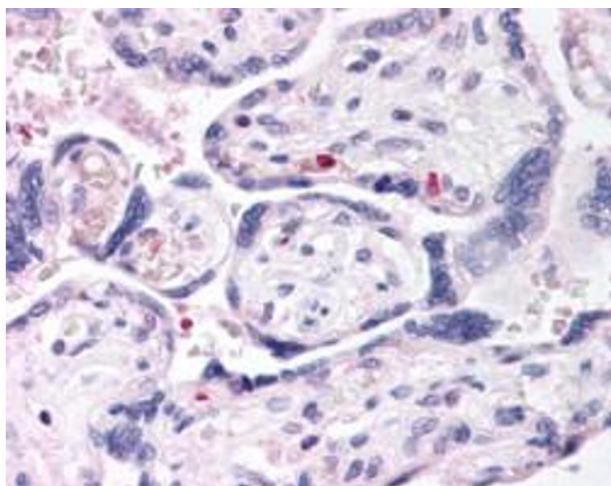
Target:	DUSP16
Alternative Name:	DUSP16 ( <a href="#">DUSP16 Products</a> )
Background:	DUSP16, dual specificity phosphatase 16, MKP7, MKP-7, KIAA1700, MAPK phosphatase-7, MGC129701, MGC129702
Gene ID:	80824, 70686
NCBI Accession:	<a href="#">NP_085143</a>

## Application Details

Application Notes:	<p>Immunohistochemistry: In paraffin embedded Human Placenta shows individual cells in branch villi very close to the surrounding lacuna. Recommended concentration, 2-4 µg/mL.</p> <p>Western Blot: Preliminary experiments gave no signal but low background in Human Brain and Jurkat lysates at up to 1 µg/mL. We would appreciate any feedback from people in the field - have any results been reported with other antibodies/lysates?</p> <p>Peptide ELISA: antibody detection limit dilution 1:32000.</p>
Restrictions:	For Research Use only

## Handling

Format:	Liquid
Concentration:	0.5 mg/mL
Buffer:	Supplied at 0.5 mg/mL in Tris saline, 0.02 % sodium azide, pH 7.3 with 0.5 % bovine serum albumin.
Preservative:	Sodium azide
Precaution of Use:	This product contains Sodium azide: a POISONOUS AND HAZARDOUS SUBSTANCE which should be handled by trained staff only.
Handling Advice:	Minimize freezing and thawing.
Storage:	-20 °C
Storage Comment:	Aliquot and store at -20°C, with minimal freeze/thawing. A working aliquot may be refrigerated at 4°C for a few weeks and still remain viable.



#### Immunohistochemistry

**Image 1.** ABIN184650 (2.5µg/ml) staining of paraffin embedded Human Placenta. Steamed antigen retrieval with citrate buffer pH 6, AP-staining.