



Datasheet for ABIN184657
anti-PLRG1 antibody (C-Term)



[Go to Product page](#)

3 Images

Overview

Quantity:	100 µg
Target:	PLRG1
Binding Specificity:	C-Term
Reactivity:	Human, Mouse
Host:	Goat
Clonality:	Polyclonal
Conjugate:	This PLRG1 antibody is un-conjugated
Application:	Western Blotting (WB), ELISA, Immunohistochemistry (IHC)

Product Details

Purpose:	PLRG1
Immunogen:	Peptide with sequence C-PVSWKPEIHKRKRKRF, from the C Terminus of the protein sequence according to NP_002660.1, NP_001188493.1.
Sequence:	PVSWKPEIHKRKRKRF
Isotype:	IgG
Specificity:	This antibody is expected to recognise isoform 1 (NP_002660.1) and isoform 2 (NP_001188493.1).
Cross-Reactivity:	Cow, Dog, Human, Mouse, Pig, Rat
Purification:	Purified from goat serum by ammonium sulphate precipitation followed by antigen affinity chromatography using the immunizing peptide.

Product Details

Grade: Verified

Target Details

Target: PLRG1

Alternative Name: PLRG1 ([PLRG1 Products](#))

Background: PLRG1, pleiotropic regulator 1 (PRL1 homolog, Arabidopsis), PRL1, MGC110980, pleiotropic regulator 1 (PRL1, Arabidopsis homolog), pleiotropic regulator 1 (PRL1 homolog, Arabidopsis), pleiotropic regulator 1 (PRL1, Arabidopsis homolog)

Gene ID: 5356, 60376

NCBI Accession: [NP_002660](#), [NP_001188493](#)

Application Details

Application Notes: Immunohistochemistry: Paraffin embedded Human Prostate. Recommended concentration: 5 µg/mL.
Western Blot: Approx 60 kDa band observed in nuclear lysates of cell lines HEK293 and NIH3T3 (calculated MW of 57.2 kDa according to Human NP_002660.1 and 56.9 kDa according to Mouse NP_058064.2). Recommended concentration: 0.1-0.3 µg/mL. Primary incubation
Peptide ELISA: antibody detection limit dilution 1:16000.

Restrictions: For Research Use only

Handling

Format: Liquid

Concentration: 0.5 mg/mL

Buffer: Supplied at 0.5 mg/mL in Tris saline, 0.02 % sodium azide, pH 7.3 with 0.5 % bovine serum albumin.

Preservative: Sodium azide

Precaution of Use: This product contains Sodium azide: a POISONOUS AND HAZARDOUS SUBSTANCE which should be handled by trained staff only.

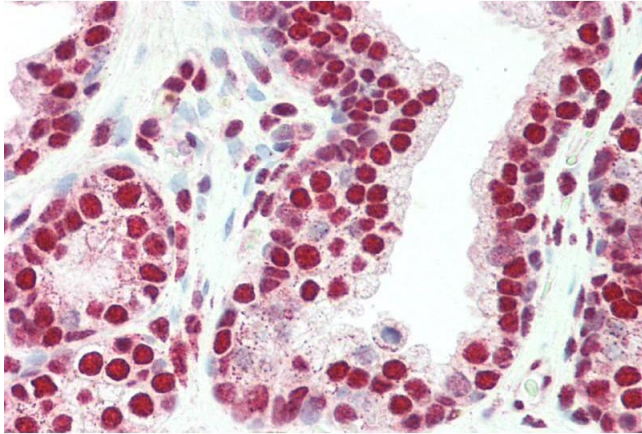
Handling Advice: Minimize freezing and thawing.

Storage: -20 °C

Handling

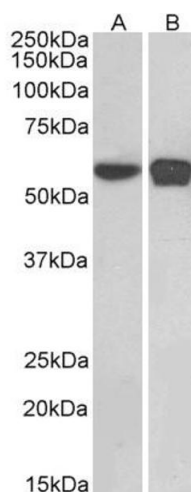
Storage Comment: Aliquot and store at -20°C , with minimal freeze/thawing. A working aliquot may be refrigerated at 4°C for a few weeks and still remain viable.

Images



Immunohistochemistry

Image 1. ABIN184657 ($5\mu\text{g/ml}$) staining of paraffin embedded Human Prostate. Steamed antigen retrieval with citrate buffer pH 6, AP-staining.



Western Blotting

Image 2. ABIN184657 ($0.1\mu\text{g/ml}$) staining of HEK293 (A) and NIH3T3 (B) nuclear cell lysates ($35\mu\text{g}$ protein in RIPA buffer). Detected by chemiluminescence.



Western Blotting

Image 3. ABIN184657 staining ($0.5\mu\text{g/ml}$) of Mouse Kidney extract (RIPA buffer, $35\mu\text{g}$ total protein per lane). Primary incubated for 1 hour. Detected by western blot using chemiluminescence.