

Datasheet for ABIN184658

**anti-LASP1 antibody (N-Term)****2** Images[Go to Product page](#)

## Overview

Quantity:	100 µg
Target:	LASP1
Binding Specificity:	N-Term
Reactivity:	Human
Host:	Goat
Clonality:	Polyclonal
Conjugate:	This LASP1 antibody is un-conjugated
Application:	Western Blotting (WB), ELISA

## Product Details

Purpose:	LASP1 (N Terminus)
Immunogen:	Peptide with sequence NPNCARCGKIVYP, from the N Terminus of the protein sequence according to NP_006139.1.
Sequence:	NPNCARCGKI VYP
Isotype:	IgG
Cross-Reactivity:	Dog, Human, Mouse, Pig, Rat
Purification:	Purified from goat serum by ammonium sulphate precipitation followed by antigen affinity chromatography using the immunizing peptide.
Grade:	Verified

## Target Details

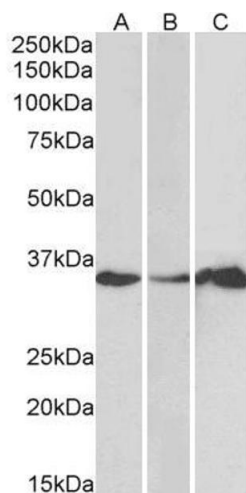
Target:	LASP1
Alternative Name:	LASP1 ( <a href="#">LASP1 Products</a> )
Background:	LASP1, LIM and SH3 protein 1, MLN50, Lasp-1, LIM and SH3 protein
Gene ID:	3927, 16796, 29278
NCBI Accession:	<a href="#">NP_006139</a>

## Application Details

Application Notes:	Western Blot: Approx 35 kDa band observed in Human Brain (Cerebellum) and Human Colon, Duodenum, Liver and Pancreas lysates (calculated MW of 29.7 kDa according to NP_006139.1). Recommended concentration: 1-3 µg/mL. Peptide ELISA: antibody detection limit dilution 1:128000.
Restrictions:	For Research Use only

## Handling

Format:	Liquid
Concentration:	0.5 mg/mL
Buffer:	Supplied at 0.5 mg/mL in Tris saline, 0.02 % sodium azide, pH 7.3 with 0.5 % bovine serum albumin.
Preservative:	Sodium azide
Precaution of Use:	This product contains Sodium azide: a POISONOUS AND HAZARDOUS SUBSTANCE which should be handled by trained staff only.
Handling Advice:	Minimize freezing and thawing.
Storage:	-20 °C
Storage Comment:	Aliquot and store at -20°C, with minimal freeze/thawing. A working aliquot may be refrigerated at 4°C for a few weeks and still remain viable.



Western Blotting

**Image 1.** ABIN184658 (1µg/ml) staining of Human Cerebellum (A), Colon (B) and Duodenum (C) lysate (35µg protein in RIPA buffer). Primary incubation was 1 hour. Detected by chemiluminescence



Western Blotting

**Image 2.** ABIN184658 staining (0.1µg/ml) of Human Brain (Cerebellum) extracts (RIPA buffer, 35µg total protein per lane). Primary incubated for 1 hour. Detected by western blot using chemiluminescence.