

Datasheet for ABIN184664  
**anti-CDCP1 antibody (C-Term)**

## 2 Images

[Go to Product page](#)

## Overview

Quantity:	100 µg
Target:	CDCP1
Binding Specificity:	C-Term
Reactivity:	Human
Host:	Goat
Clonality:	Polyclonal
Conjugate:	This CDCP1 antibody is un-conjugated
Application:	Western Blotting (WB), ELISA, Immunohistochemistry (IHC)

## Product Details

Purpose:	CDCP1 (isoform 1: C term)
Immunogen:	Peptide with sequence C-PLLNTQEPMEPAE, from the C Terminus of the protein sequence according to NP_073753.3.
Sequence:	PLLNTQEPME PAE
Isotype:	IgG
Specificity:	This antibody is expected to recognize isoform 1 (NP_073753.3) only.
Cross-Reactivity:	Human
Purification:	Purified from goat serum by ammonium sulphate precipitation followed by antigen affinity chromatography using the immunizing peptide.
Grade:	Verified

## Target Details

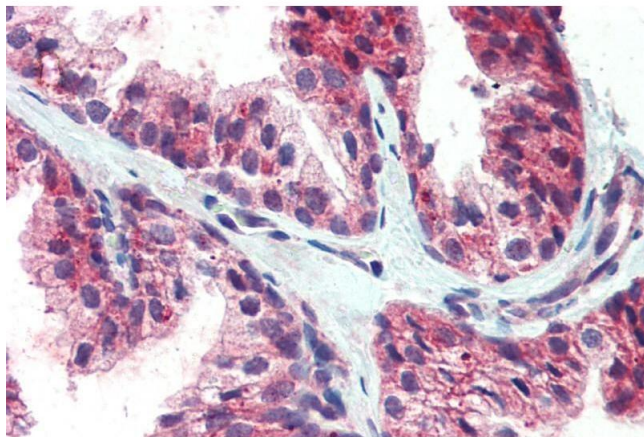
Target:	CDCP1
Alternative Name:	CDCP1 ( <a href="#">CDCP1 Products</a> )
Background:	CDCP1, CUB domain containing protein 1 , HGNC:24357, CD318, SIMA135, TRASK , CUB domain-containing protein 1, transmembrane and associated with src kinases
Gene ID:	64866
NCBI Accession:	<a href="#">NP_073753</a>

## Application Details

Application Notes:	Immunohistochemistry: Paraffin embedded Human Prostate. Recommended concentration: 5 µg/mL.  Western Blot: Approx 90 kDa band observed in Human Colon lysates (calculated MW of 92.3 kDa according to NP_073753.3). Recommended concentration: 1-3 µg/mL. An additional band of unknown identity was also consistently observed at 200 kDa. This band was succ  Peptide ELISA: antibody detection limit dilution 1:32000.
Restrictions:	For Research Use only

## Handling

Format:	Liquid
Concentration:	0.5 mg/mL
Buffer:	Supplied at 0.5 mg/mL in Tris saline, 0.02 % sodium azide, pH 7.3 with 0.5 % bovine serum albumin.
Preservative:	Sodium azide
Precaution of Use:	This product contains Sodium azide: a POISONOUS AND HAZARDOUS SUBSTANCE which should be handled by trained staff only.
Handling Advice:	Minimize freezing and thawing.
Storage:	-20 °C
Storage Comment:	Aliquot and store at -20°C, with minimal freeze/thawing. A working aliquot may be refrigerated at 4°C for a few weeks and still remain viable.



#### Immunohistochemistry

**Image 1.** ABIN184664 (5µg/ml) staining of paraffin embedded Human Prostate. Steamed antigen retrieval with citrate buffer pH 6, AP-staining.



**Image 2.** ABIN184664 (1µg/ml) staining of Human Colon lysate (35µg protein in RIPA buffer). Primary incubation was 1 hour. Detected by chemiluminescence.