

Datasheet for ABIN184666
anti-PACSIN3 antibody (N-Term)

2 Images

[Go to Product page](#)

Overview

Quantity:	100 µg
Target:	PACSIN3
Binding Specificity:	N-Term
Reactivity:	Human
Host:	Goat
Clonality:	Polyclonal
Conjugate:	This PACSIN3 antibody is un-conjugated
Application:	Western Blotting (WB), ELISA

Product Details

Purpose:	PACSIN3
Immunogen:	Peptide with sequence APEEDAGGEALGGS-C, from the N Terminus of the protein sequence according to NP_057307.2.
Sequence:	APEEDAGGEA LGGS
Isotype:	IgG
Cross-Reactivity:	Human, Mouse, Rat
Purification:	Purified from goat serum by ammonium sulphate precipitation followed by antigen affinity chromatography using the immunizing peptide.
Grade:	Verified

Target Details

Target:	PACSIN3
Alternative Name:	PACSIN3 (PACSIN3 Products)
Background:	PACSIN3, protein kinase C and casein kinase substrate in neurons 3, SH3 domain-containing protein 6511, SDP11, syndapin III, SH3 domain-containing protein 6511
Gene ID:	29763, 80708, 311187
NCBI Accession:	NP_057307

Application Details

Application Notes:	Western Blot: EB05271 (0.03 µg/mL) staining of Human Skeletal Muscle lysate (35 µg protein in RIPA buffer). Primary incubation was 1 hour. Detected by chemiluminescence. Peptide ELISA: antibody detection limit dilution 1:4000.
Restrictions:	For Research Use only

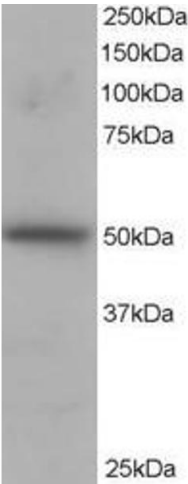
Handling

Format:	Liquid
Concentration:	0.5 mg/mL
Buffer:	Supplied at 0.5 mg/mL in Tris saline, 0.02 % sodium azide, pH 7.3 with 0.5 % bovine serum albumin.
Preservative:	Sodium azide
Precaution of Use:	This product contains Sodium azide: a POISONOUS AND HAZARDOUS SUBSTANCE which should be handled by trained staff only.
Handling Advice:	Minimize freezing and thawing.
Storage:	-20 °C
Storage Comment:	Aliquot and store at -20°C, with minimal freeze/thawing. A working aliquot may be refrigerated at 4°C for a few weeks and still remain viable.



Western Blotting

Image 1. ABIN184666 staining (1µg/ml) of H460 lysate (RIPA buffer, 35µg total protein per lane). Primary incubated for 1 hour. Detected by western blot using chemiluminescence.



Western Blotting

Image 2. ABIN184666 staining (1µg/ml) of H460 lysate (RIPA buffer, 35µg total protein per lane). Primary incubated for 1 hour. Detected by western blot using chemiluminescence.