

Datasheet for ABIN184669
anti-DDAH1 antibody (C-Term)

8 Images

[Go to Product page](#)

Overview

Quantity:	100 µg
Target:	DDAH1
Binding Specificity:	C-Term
Reactivity:	Human
Host:	Goat
Clonality:	Polyclonal
Conjugate:	This DDAH1 antibody is un-conjugated
Application:	Western Blotting (WB), ELISA, Immunofluorescence (IF), Flow Cytometry (FACS)

Product Details

Purpose:	DDAH1
Immunogen:	Peptide with sequence TCCSVLINKKVDS, from the C Terminus of the protein sequence according to NP_036269.1, NP_001127917.1.
Sequence:	TCCSVLINKK VDS
Isotype:	IgG
Specificity:	This antibody is expected to recognize both reported isoforms (NP_036269.1 and NP_001127917.1).
Cross-Reactivity:	Cow, Human
Purification:	Purified from goat serum by ammonium sulphate precipitation followed by antigen affinity chromatography using the immunizing peptide.

Product Details

Grade: Verified

Target Details

Target:	DDAH1
Alternative Name:	DDAH1 (DDAH1 Products)
Background:	DDAH1, dimethylarginine dimethylaminohydrolase 1, DDAH, DDAHI, NG, NG-dimethylarginine dimethylaminohydrolase, RP4-621F18.1, FLJ21264, FLJ25539
Gene ID:	23576
NCBI Accession:	NP_036269 , NP_001127917

Application Details

Application Notes:	Western Blot: Approx 37 kDa band observed in Human Cerebellum, Kidney and Testis lysates, and in lysates of cell lines HepG2 and LNCaP (calculated MW of 31.1 kDa according to NP_036269.1). This molecular weight is routinely observed by other sources. Rec Peptide ELISA: antibody detection limit dilution 1:1000.
Comment:	Immunofluorescence: Strong expression of the protein seen in HeLa and U2OS cells. Recommended concentration: 10µg/ml. Flow Cytometry: Flow cytometric analysis of HeLa cells. Recommended concentration: 10ug/ml.
Restrictions:	For Research Use only

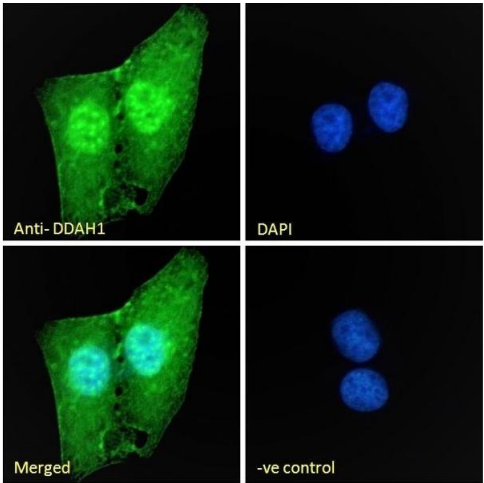
Handling

Format:	Liquid
Concentration:	0.5 mg/mL
Buffer:	Supplied at 0.5 mg/mL in Tris saline, 0.02 % sodium azide, pH 7.3 with 0.5 % bovine serum albumin.
Preservative:	Sodium azide
Precaution of Use:	This product contains Sodium azide: a POISONOUS AND HAZARDOUS SUBSTANCE which should be handled by trained staff only.
Handling Advice:	Minimize freezing and thawing.

Handling

Storage:	-20 °C
Storage Comment:	Aliquot and store at -20°C, with minimal freeze/thawing. A working aliquot may be refrigerated at 4°C for a few weeks and still remain viable.

Images



Immunofluorescence

Image 1. (ABIN184669) Immunofluorescence analysis of paraformaldehyde fixed U2OS cells, permeabilized with 0.15 % Triton. Primary incubation 1hr (10 µg/mL) followed by Alexa Fluor 488 secondary antibody (2 µg/mL), showing nuclear and cytoplasmic staining. The nuclear stai

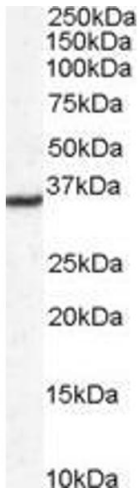


Image 2. ABIN184669 staining (0.1 µg/mL) of human kidney lysate (RIPA buffer, 35 µg total protein per lane). Primary incubated for 1 hour. Detected by western blot using chemiluminescence.



Western Blotting

Image 3. ABIN184669 staining (0.1µg/ml) of human kidney lysate (RIPA buffer, 35µg total protein per lane). Primary incubated for 1 hour. Detected by western blot using chemiluminescence.

Please check the [product details page](#) for more images. Overall 8 images are available for ABIN184669.