



Datasheet for ABIN184671  
**anti-PTGS1 antibody (C-Term)**



[Go to Product page](#)

5 Images

Overview

Quantity:	100 µg
Target:	PTGS1
Binding Specificity:	C-Term
Reactivity:	Human
Host:	Goat
Clonality:	Polyclonal
Conjugate:	This PTGS1 antibody is un-conjugated
Application:	Western Blotting (WB), Immunohistochemistry (IHC), ELISA

Product Details

Purpose:	COX1 / PTGS1
Immunogen:	Peptide with sequence C-QDDGPAVERPSTEL, from the C Terminus of the protein sequence according to NP_000953.2, NP_542158.1.
Sequence:	QDDGPAVERP STEL
Isotype:	IgG
Specificity:	This antibody is expected to recognise both human isoforms of this protein according to NP_000953.2 and NP_542158.1.
Cross-Reactivity:	Human
Purification:	Purified from goat serum by ammonium sulphate precipitation followed by antigen affinity chromatography using the immunizing peptide.

## Product Details

---

Grade: Verified

## Target Details

---

Target: PTGS1

Alternative Name: PTGS1 ([PTGS1 Products](#))

Background: PTGS1, COX1, COX3, PHS1, PCOX1, PGHS1, PTGHS, PGG/HS, PGHS-1, prostaglandin-endoperoxide synthase 1 (prostaglandin G/H synthase and cyclooxygenase), prostaglandin G/H synthase and cyclooxygenase, RP11-542K23.6

Gene ID: 5742

NCBI Accession: [NP\\_000953](#), [NP\\_542158](#)

## Application Details

---

Application Notes: Immunohistochemistry: In paraffin embedded Human Heart shows patchy staining of myocardial fibres in longitudinal section. Recommended concentration, 3-5 µg/mL.  
Western Blot: Approx 70 kDa band observed in lysates of histiocytic lymphoma cell line U937 (calculated MW of 68.7 kDa according to NP\_000953.2) Recommended for use at 0.3-1 µg/mL.  
Primary incubation 1 hour at room temperature.  
Peptide ELISA: antibody detection limit dilution 1:32000.

Restrictions: For Research Use only

## Handling

---

Format: Liquid

Concentration: 0.5 mg/mL

Buffer: Supplied at 0.5 mg/mL in Tris saline, 0.02 % sodium azide, pH 7.3 with 0.5 % bovine serum albumin.

Preservative: Sodium azide

Precaution of Use: This product contains Sodium azide: a POISONOUS AND HAZARDOUS SUBSTANCE which should be handled by trained staff only.

Handling Advice: Minimize freezing and thawing.

Storage: -20 °C

## Handling

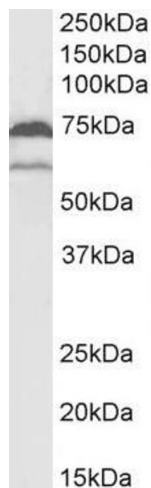
Storage Comment: Aliquot and store at -20°C, with minimal freeze/thawing. A working aliquot may be refrigerated at 4°C for a few weeks and still remain viable.

## Images



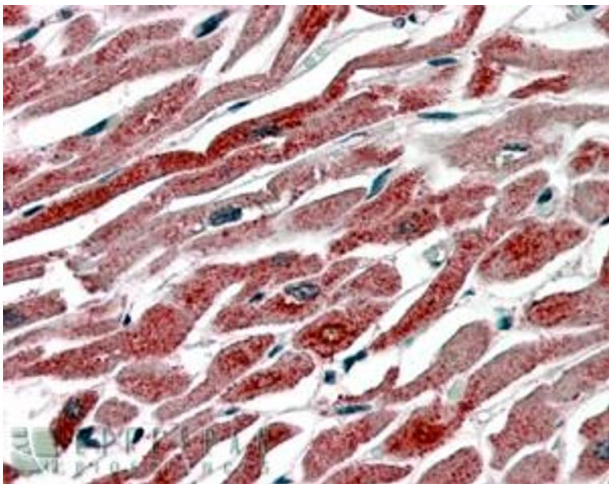
### Western Blotting

**Image 1.** ABIN184671 staining (1µg/ml) of HeLa lysate (RIPA buffer, 30µg total protein per lane). Primary incubated for 1 hour. Detected by western blot using chemiluminescence.



### Western Blotting

**Image 2.** ABIN184671 (2µg/ml) staining of U937 lysate (35µg protein in RIPA buffer). Primary incubation was 1 hour. Detected by chemiluminescence.



### Immunohistochemistry

**Image 3.** ABIN184671 (3.8µg/ml) staining of paraffin embedded Human Heart. Steamed antigen retrieval with citrate buffer pH 6, AP-staining. This data is from a previous batch, not on sale.

Please check the [product details page](#) for more images. Overall 5 images are available for ABIN184671.