

Datasheet for ABIN184674
anti-PYCARD antibody (C-Term)

6 Images

[Go to Product page](#)

Overview

Quantity:	100 µg
Target:	PYCARD
Binding Specificity:	C-Term
Reactivity:	Human
Host:	Goat
Clonality:	Polyclonal
Conjugate:	This PYCARD antibody is un-conjugated
Application:	Western Blotting (WB), ELISA, Immunohistochemistry (IHC)

Product Details

Purpose:	ASC / TMS1
Immunogen:	Peptide with sequence C-RESQSYLVEDLERS, from the C Terminus of the protein sequence according to NP_037390.2, NP_660183.1.
Sequence:	RESQSYLVED LERS
Isotype:	IgG
Specificity:	This antibody is expected to recognise both reported isoforms (NP_037390.2 and NP_660183.1).
Cross-Reactivity:	Human
Purification:	Purified from goat serum by ammonium sulphate precipitation followed by antigen affinity chromatography using the immunizing peptide.

Product Details

Grade: Verified

Target Details

Target: PYCARD

Alternative Name: PYCARD ([PYCARD Products](#))

Background: PYCARD, ASC, TMS1, PYD and CARD domain containing, CARD5, MGC10332, TMS, apoptosis-associated speck-like protein containing a CARD, caspase recruitment domain protein 5, target of methylation-induced silencing-1, TMS-1

Gene ID: 29108

NCBI Accession: [NP_037390](#), [NP_660183](#)

Pathways: [Activation of Innate immune Response](#), [Cellular Response to Molecule of Bacterial Origin](#), [Regulation of Actin Filament Polymerization](#), [Positive Regulation of Endopeptidase Activity](#), [Activated T Cell Proliferation](#), [Inflammasome](#)

Application Details

Application Notes: Immunohistochemistry: In paraffin embedded Human Liver shows staining of sinusoidal lining cells. Recommended concentration: 4-6 µg/mL.
Western Blot: Approx 19 kDa band observed in lysates of cell line HeLa (calculated MW of 20.0 kDa according to NP_660183.1). Recommended concentration: 0.2-0.6 µg/mL. Primary incubation was 1 hour.
Peptide ELISA: antibody detection limit dilution 1:16000.

Restrictions: For Research Use only

Handling

Format: Liquid

Concentration: 0.5 mg/mL

Buffer: Supplied at 0.5 mg/mL in Tris saline, 0.02 % sodium azide, pH 7.3 with 0.5 % bovine serum albumin.

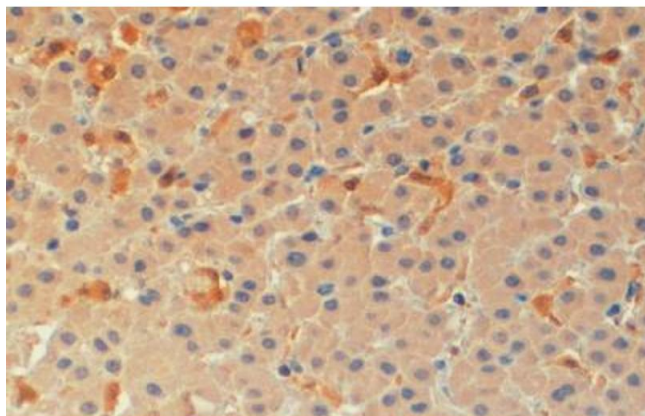
Preservative: Sodium azide

Precaution of Use: This product contains Sodium azide: a POISONOUS AND HAZARDOUS SUBSTANCE which should be handled by trained staff only.

Handling

Handling Advice:	Minimize freezing and thawing.
Storage:	-20 °C
Storage Comment:	Aliquot and store at -20°C, with minimal freeze/thawing. A working aliquot may be refrigerated at 4°C for a few weeks and still remain viable.

Images



Immunohistochemistry

Image 1. ABIN184674 (4µg/ml) staining of paraffin embedded Human Liver. Steamed antigen retrieval with citrate buffer pH 6, HRP-staining.

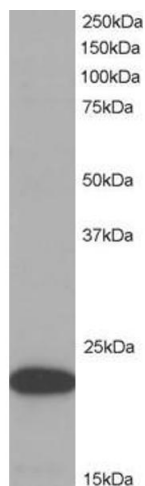
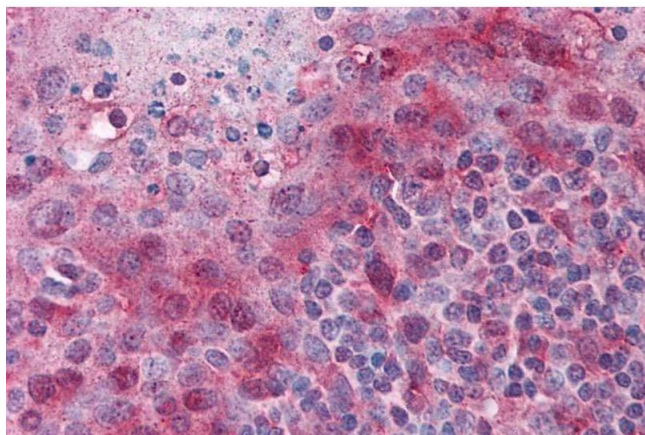


Image 2. ABIN184674 (1µg/ml) staining of HeLa lysate (35µg protein in RIPA buffer). Primary incubation was 1 hour. Detected by chemiluminescence.



Immunohistochemistry

Image 3. ABIN184674 (2.5µg/ml) staining of paraffin embedded Human Tonsil. Steamed antigen retrieval with citrate buffer pH 6, AP-staining.

Please check the [product details page](#) for more images. Overall 6 images are available for ABIN184674.