

Datasheet for ABIN184679
anti-NUMB antibody (C-Term)[Go to Product page](#)

9 Images

Overview

Quantity:	100 µg
Target:	NUMB
Binding Specificity:	C-Term
Reactivity:	Human, Mouse
Host:	Goat
Clonality:	Polyclonal
Conjugate:	This NUMB antibody is un-conjugated
Application:	Immunohistochemistry (IHC), ELISA, Immunofluorescence (IF), Flow Cytometry (FACS)

Product Details

Purpose:	NUMB
Immunogen:	Peptide with sequence C-PFSSDLQKTFEIEL, from the C Terminus of the protein sequence according to NP_001005743.1, 001005744.1, NP_003735, NP_001005745.1.
Sequence:	PFSSDLQKTF EIEL
Isotype:	IgG
Specificity:	This antibody is expected to recognize all reported isoforms (NP_001005743.1, 001005744.1, NP_003735, NP_001005745.1). It is also likely to cross-react with Numbl-like (NUMBL, GeneID: 9253) which has a very similar C-Terminus, although this has not yet been confirmed.
Cross-Reactivity:	Cow, Dog, Human, Mouse
Purification:	Purified from goat serum by ammonium sulphate precipitation followed by antigen affinity

Product Details

chromatography using the immunizing peptide.

Grade: Verified

Target Details

Target: NUMB

Alternative Name: NUMB ([NUMB Products](#))

Background: NUMB, numb homolog (Drosophila), S171, numb homolog

Gene ID: 8650, 18222

NCBI Accession: [NP_001005743](#), [NP_003735](#), [NP_001005745](#)

Pathways: [Cell-Cell Junction Organization](#)

Application Details

Application Notes: Immunohistochemistry: Paraffin embedded Human Prostate. Recommended concentration: 6-8 µg/mL.

Peptide ELISA: antibody detection limit dilution 1:128000.

Comment: **Immunofluorescence:** Strong expression of the protein seen in the cell junctions/plasma membrane and cytoplasm of A431 and NIH3T3 cells. Recommended concentration: 10µg/ml.

Flow Cytometry: Flow cytometric analysis of

Restrictions: For Research Use only

Handling

Format: Liquid

Concentration: 0.5 mg/mL

Buffer: Supplied at 0.5 mg/mL in Tris saline, 0.02 % sodium azide, pH 7.3 with 0.5 % bovine serum albumin.

Preservative: Sodium azide

Precaution of Use: This product contains Sodium azide: a POISONOUS AND HAZARDOUS SUBSTANCE which should be handled by trained staff only.

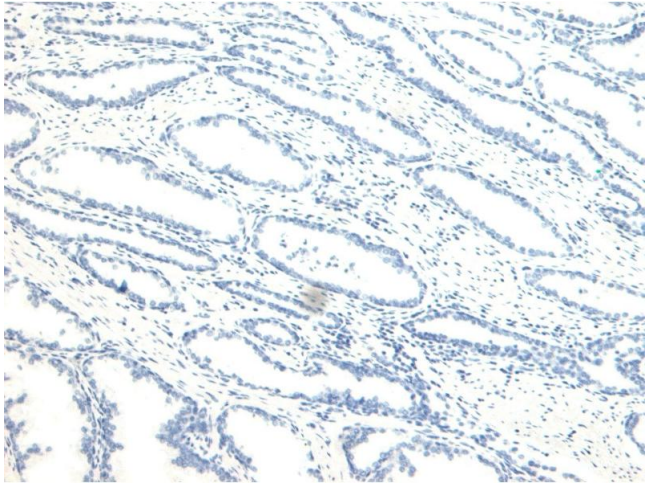
Handling Advice: Minimize freezing and thawing.

Storage: -20 °C

Handling

Storage Comment: Aliquot and store at -20°C, with minimal freeze/thawing. A working aliquot may be refrigerated at 4°C for a few weeks and still remain viable.

Images



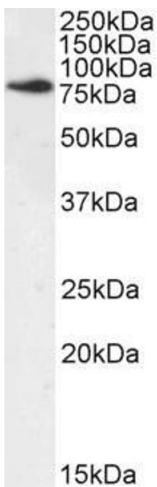
Immunohistochemistry

Image 1. (ABIN184679) Negative Control showing staining of paraffin embedded Human Prostate, with no primary antibody.



Western Blotting

Image 2. ABIN184679 staining (0.03µg/ml) of Mouse Brain lysate (RIPA buffer, 30µg total protein per lane). Primary incubated for 1 hour. Detected by western blot using chemiluminescence.



Western Blotting

Image 3. ABIN184679 (1µg/ml) staining of Mouse Brain lysate (35µg protein in RIPA buffer). Detected by chemiluminescence.

Please check the [product details page](#) for more images. Overall 9 images are available for ABIN184679.