

Datasheet for ABIN184684
anti-ELMO2 antibody (C-Term)[Go to Product page](#)

2 Images

Overview

Quantity:	100 µg
Target:	ELMO2
Binding Specificity:	C-Term
Reactivity:	Human, Mouse, Rat
Host:	Goat
Clonality:	Polyclonal
Conjugate:	This ELMO2 antibody is un-conjugated
Application:	Western Blotting (WB), ELISA, Immunohistochemistry (IHC), Flow Cytometry (FACS), Immunofluorescence (IF)

Product Details

Purpose:	ELMO2
Immunogen:	C-PKEPSSYDFVYHYG
Sequence:	PKEPSSYDFV YHYG
Isotype:	IgG
Cross-Reactivity:	Cow, Dog, Human, Mouse, Pig, Rat
Purification:	Purified from goat serum by ammonium sulphate precipitation followed by antigen affinity chromatography using the immunizing peptide.
Grade:	Verified

Target Details

Target:	ELM02
Alternative Name:	ELM02 (ELM02 Products)
Background:	ELM02, engulfment and cell motility 2 (ced-12 homolog, C. elegans), CED12, FLJ11656, KIAA1834, ced-12 homolog 2, PH domain protein CED12A, engulfment and cell motility 2, engulfment and cell motility 2, RP11-39402.2, CED-12, ELMO-2
Gene ID:	63916, 140579
NCBI Accession:	NP_877496 , NP_573403

Application Details

Application Notes:	<p>Immunohistochemistry: In paraffin embedded Human Prostate shows pixulated staining in the cytoplasm of stroma cells. Recommended concentration: 3-6 µg/mL.</p> <p>Western Blot: Approx 80 kDa band observed in lysates of cell lines HEK293, Jurkat, RAW264.7 and in Human Cerebellum and Rat Brain lysates (calculated MW of 82.6 kDa according to Human NP_573403.1 and NP_877496.1 and Mouse NP_525026.2, and 83.7 kDa according Peptide ELISA: antibody detection limit dilution 1:32000.</p>
Comment:	<p>Immunofluorescence: Strong expression of the protein seen in A549 and U2OS cells. Recommended concentration: 10µg/ml.</p> <p>Flow Cytometry: Flow cytometric analysis of A549 cells. Recommended concentration: 10ug/ml.</p>
Restrictions:	For Research Use only

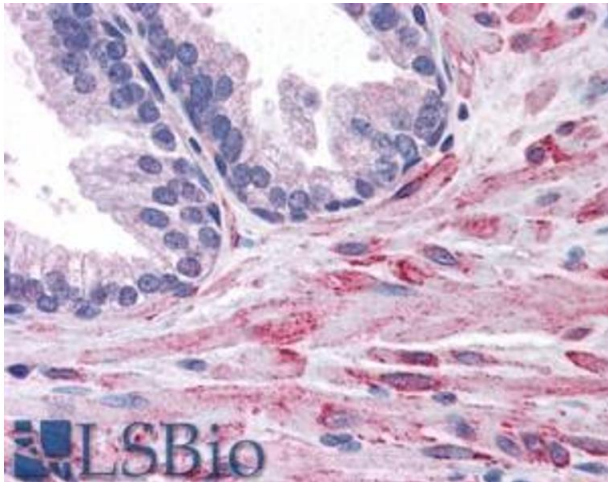
Handling

Format:	Liquid
Concentration:	0.5 mg/mL
Buffer:	Supplied at 0.5 mg/mL in Tris saline, 0.02 % sodium azide, pH 7.3 with 0.5 % bovine serum albumin.
Preservative:	Sodium azide
Precaution of Use:	This product contains Sodium azide: a POISONOUS AND HAZARDOUS SUBSTANCE which should be handled by trained staff only.
Handling Advice:	Minimize freezing and thawing.
Storage:	-20 °C

Handling

Storage Comment: Aliquot and store at -20°C, with minimal freeze/thawing. A working aliquot may be refrigerated at 4°C for a few weeks and still remain viable.

Validation report #103876 for Western Blotting (WB)



Immunohistochemistry

Image 1. ABIN184684 (3.8µg/ml) staining of paraffin embedded Human Prostate. Steamed antigen retrieval with citrate buffer pH 6, AP-staining.



Western Blotting

Image 2. ABIN184684 staining (2µg/ml) of Human Brain lysate (RIPA buffer, 30µg total protein per lane). Primary incubated for 12 hour. Detected by chemiluminescence.