

Datasheet for ABIN184686
anti-Annexin a10 antibody (N-Term)[Go to Product page](#)

1 Image

Overview

Quantity:	100 µg
Target:	Annexin a10 (ANXA10)
Binding Specificity:	N-Term
Reactivity:	Human
Host:	Goat
Clonality:	Polyclonal
Conjugate:	This Annexin a10 antibody is un-conjugated
Application:	ELISA, Immunohistochemistry (IHC)

Product Details

Purpose:	Annexin A10 / Annexin 14
Immunogen:	Peptide with sequence FCGDYVQGTIFPAPN, from the N Terminus of the protein sequence according to NP_009124.2.
Sequence:	FCGDYVQGTI FPAPN
Isotype:	IgG
Cross-Reactivity:	Cow, Human, Mouse, Rat
Purification:	Purified from goat serum by ammonium sulphate precipitation followed by antigen affinity chromatography using the immunizing peptide.
Grade:	Verified

Target Details

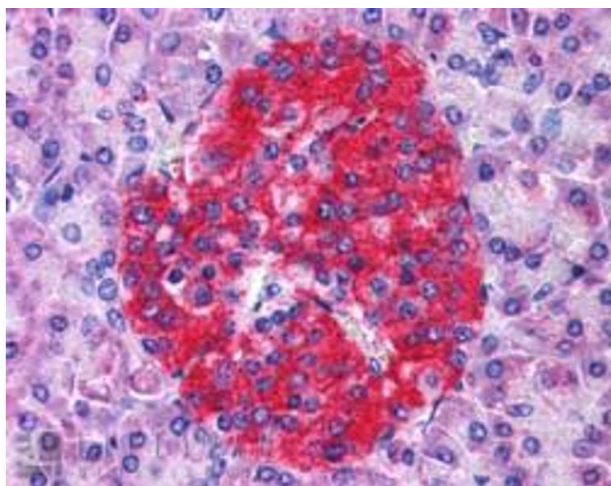
Target:	Annexin a10 (ANXA10)
Alternative Name:	ANXA10 (ANXA10 Products)
Background:	ANXA10, annexin A10, ANX14, annexin 14
Gene ID:	11199
NCBI Accession:	NP_009124

Application Details

Application Notes:	<p>Immunohistochemistry: In paraffin embedded Human Pancreas shows staining of islet of Langerhans . Recommended concentration, 3-5 µg/mL.</p> <p>Western Blot: Preliminary experiments (at 1 µg/mL) gave an approx 45-48 kDa band in Hela, A431 and Human Kidney lysates. Please note that currently we cannot find an explanation in the literature for the band we observe given the predicted size of approx.</p> <p>Peptide ELISA: antibody detection limit dilution 1:8000.</p>
Restrictions:	For Research Use only

Handling

Format:	Liquid
Concentration:	0.5 mg/mL
Buffer:	Supplied at 0.5 mg/mL in Tris saline, 0.02 % sodium azide, pH 7.3 with 0.5 % bovine serum albumin.
Preservative:	Sodium azide
Precaution of Use:	This product contains Sodium azide: a POISONOUS AND HAZARDOUS SUBSTANCE which should be handled by trained staff only.
Handling Advice:	Minimize freezing and thawing.
Storage:	-20 °C
Storage Comment:	Aliquot and store at -20°C, with minimal freeze/thawing. A working aliquot may be refrigerated at 4°C for a few weeks and still remain viable.



Immunohistochemistry

Image 1. ABIN184686 (3.8µg/ml) staining of paraffin embedded Human Pancreas. Steamed antigen retrieval with citrate buffer pH 6, AP-staining.