

Datasheet for ABIN184689  
**anti-RAC2 antibody (C-Term)**

## 5 Images

[Go to Product page](#)

## Overview

Quantity:	100 µg
Target:	RAC2
Binding Specificity:	C-Term
Reactivity:	Human
Host:	Goat
Clonality:	Polyclonal
Conjugate:	This RAC2 antibody is un-conjugated
Application:	Western Blotting (WB), ELISA, Immunohistochemistry (IHC)

## Product Details

Purpose:	RAC2
Immunogen:	Peptide with sequence PQPTRQQKRACSL, from the C Terminus of the protein sequence according to NP_002863.1.
Sequence:	PQPTRQQKRA CSL
Isotype:	IgG
Cross-Reactivity:	Human, Mouse, Rat
Purification:	Purified from goat serum by ammonium sulphate precipitation followed by antigen affinity chromatography using the immunizing peptide.
Grade:	Verified

## Target Details

Target:	RAC2
Alternative Name:	RAC2 ( <a href="#">RAC2 Products</a> )
Background:	RAC2, ras-related C3 botulinum toxin substrate 2 (rho family, small GTP binding protein Rac2), EN-7, Ras-related C3 botulinum toxin substrate 2, rho family, small GTP binding protein Rac2, Ras-related C3 botulinum toxin substrate 3 (rho family, small GTP-
Gene ID:	5880
NCBI Accession:	<a href="#">NP_002863</a>
Pathways:	<a href="#">RTK Signaling</a> , <a href="#">VEGF Signaling</a>

## Application Details

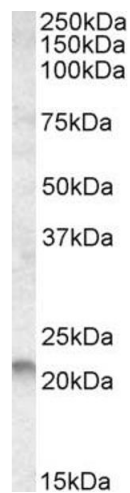
Application Notes:	<p>Immunohistochemistry: In paraffin embedded Human Tonsil shows staining in mantle zone and some in the interfollicular area. Unstained in germinal centre. Recommended concentration, 2-4 µg/mL.</p> <p>Western Blot: Approx 22 kDa band observed in lysates of cell line Molt4 (calculated MW of 21.4 kDa according to NP_002863.1). Recommended concentration: 0.1-0.3 µg/mL. Primary incubation 1 hour at room temperature.</p> <p>Peptide ELISA: antibody detection limit dilution 1:32000.</p>
Restrictions:	For Research Use only

## Handling

Format:	Liquid
Concentration:	0.5 mg/mL
Buffer:	Supplied at 0.5 mg/mL in Tris saline, 0.02 % sodium azide, pH 7.3 with 0.5 % bovine serum albumin.
Preservative:	Sodium azide
Precaution of Use:	This product contains Sodium azide: a POISONOUS AND HAZARDOUS SUBSTANCE which should be handled by trained staff only.
Handling Advice:	Minimize freezing and thawing.
Storage:	-20 °C
Storage Comment:	Aliquot and store at -20°C, with minimal freeze/thawing. A working aliquot may be refrigerated

at 4°C for a few weeks and still remain viable.

Images



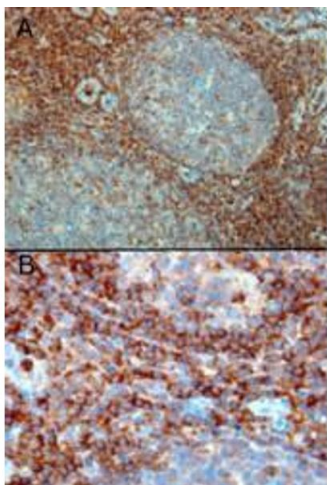
**Western Blotting**

**Image 1.** (ABIN184689) (0.1 µg/mL) staining of Molt4 lysate (35 µg protein in RIPA buffer). Detected by chemiluminescence.



**Western Blotting**

**Image 2.** ABIN184689 staining (2µg/ml) of MOLT-4 lysate (RIPA buffer, 35µg total protein per lane). Primary incubated for 1 hour. Detected by western blot using chemiluminescence.



**Immunohistochemistry**

**Image 3.** ABIN184689 (0.3µg/ml) staining of paraffin embedded Human Tonsil. Microwaved antigen retrieval with Tris/EDTA buffer pH9, HRP-staining. A) Strong staining in the interfollicular area and mantle zone. B) Positive cells in the interfollicular area.

Please check the [product details page](#) for more images. Overall 5 images are available for ABIN184689.