

Datasheet for ABIN184696
anti-TRF1 antibody (C-Term)



[Go to Product page](#)

1 Image

Overview

Quantity:	100 µg
Target:	TRF1 (TERF1)
Binding Specificity:	C-Term
Reactivity:	Human
Host:	Goat
Clonality:	Polyclonal
Conjugate:	This TRF1 antibody is un-conjugated
Application:	Western Blotting (WB), ELISA

Product Details

Purpose:	TERF1 / PIN2
Immunogen:	C-TMKKLLKLISSDSED
Sequence:	TMKKLKLISS DSED
Isotype:	IgG
Specificity:	This antibody is expected to recognise isoform 1 (NP_059523.2) and isoform 2 (NP_003209.2).
Cross-Reactivity:	Cow, Human, Pig
Purification:	Purified from goat serum by ammonium sulphate precipitation followed by antigen affinity chromatography using the immunizing peptide.
Grade:	Verified

Target Details

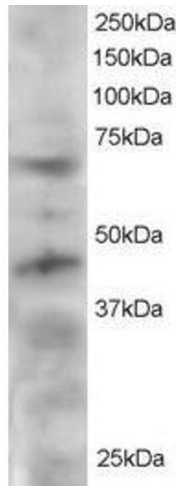
Target:	TRF1 (TERF1)
Alternative Name:	TERF1 (TERF1 Products)
Background:	TERF1, PIN2, TRF, TRF1, TRBF1, hTRF1-AS, telomeric repeat binding factor (NIMA-interacting) 1, Telomeric repeat binding factor 1, telomeric repeat binding protein 1, FLJ41416, t-TRF1
Gene ID:	7013
NCBI Accession:	NP_003209 , NP_059523
Pathways:	Cell Division Cycle , Telomere Maintenance , Hormone Transport , Chromatin Binding , Regulation of Cell Size , Positive Regulation of Endopeptidase Activity

Application Details

Application Notes:	Western Blot: Approx 60-65 kDa and 45 kDa bands seen in HeLa lysate. Recommended for use at 1-3 µg/mL. Peptide ELISA: antibody detection limit dilution 1:8000.
Restrictions:	For Research Use only

Handling

Format:	Liquid
Concentration:	0.5 mg/mL
Buffer:	Supplied at 0.5 mg/mL in Tris saline, 0.02 % sodium azide, pH 7.3 with 0.5 % bovine serum albumin.
Preservative:	Sodium azide
Precaution of Use:	This product contains Sodium azide: a POISONOUS AND HAZARDOUS SUBSTANCE which should be handled by trained staff only.
Handling Advice:	Minimize freezing and thawing.
Storage:	-20 °C
Storage Comment:	Aliquot and store at -20°C, with minimal freeze/thawing. A working aliquot may be refrigerated at 4°C for a few weeks and still remain viable.



Western Blotting

Image 1. ABIN184696 staining (2 ug/ml) of HeLa lysate (RIPA buffer, 30 ug total protein per lane). Primary incubated for 12 hour. Detected by western blot using chemiluminescence.