

Datasheet for ABIN184697  
**anti-STUB1 antibody (C-Term)**

## 5 Images

[Go to Product page](#)

## Overview

Quantity:	100 µg
Target:	STUB1
Binding Specificity:	C-Term
Reactivity:	Human
Host:	Goat
Clonality:	Polyclonal
Conjugate:	This STUB1 antibody is un-conjugated
Application:	Western Blotting (WB), ELISA, Immunohistochemistry (IHC)

## Product Details

Purpose:	STUB1 / CHIP
Immunogen:	Peptide with sequence C-DAFISENGWVEDY, from the C Terminus of the protein sequence according to NP_005852.2.
Sequence:	DAFISENGWV EDY
Isotype:	IgG
Cross-Reactivity:	Cow, Dog, Human, Mouse, Rat
Purification:	Purified from goat serum by ammonium sulphate precipitation followed by antigen affinity chromatography using the immunizing peptide.
Grade:	Verified

### Target Details

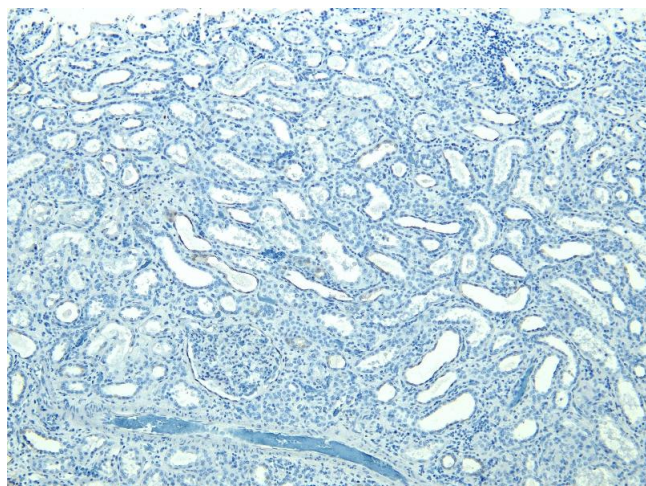
Target:	STUB1
Alternative Name:	STUB1 ( <a href="#">STUB1 Products</a> )
Background:	STUB1, CHIP, STIP1 homology and U-Box containing protein 1, HSPABP2, NY-CO-7, SDCCAG7, serologically defined colon cancer antigen 7, carboxy terminus of Hsp70p-interacting protein, heat shock protein A binding protein 2 (c-terminal), LA16c-313D11.6, UBOX1
Gene ID:	10273
NCBI Accession:	<a href="#">NP_005852</a>
Pathways:	<a href="#">Regulation of Hormone Metabolic Process</a> , <a href="#">Response to Water Deprivation</a>

### Application Details

Application Notes:	Immunohistochemistry: Paraffin embedded Human Kidney. Recommended concentration: 5-6 µg/mL.  Western Blot: Approx 35 kDa band observed in Human Muscle lysates (calculated MW of 34.9 kDa according to NP_005852.2). Recommended concentration: 0.3-1 µg/mL. Primary incubation was for 1 hour.  Peptide ELISA: antibody detection limit dilution 1:64000.
Restrictions:	For Research Use only

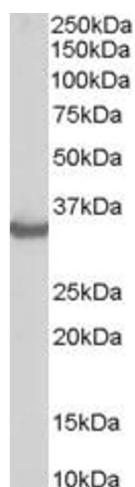
### Handling

Format:	Liquid
Concentration:	0.5 mg/mL
Buffer:	Supplied at 0.5 mg/mL in Tris saline, 0.02 % sodium azide, pH 7.3 with 0.5 % bovine serum albumin.
Preservative:	Sodium azide
Precaution of Use:	This product contains Sodium azide: a POISONOUS AND HAZARDOUS SUBSTANCE which should be handled by trained staff only.
Handling Advice:	Minimize freezing and thawing.
Storage:	-20 °C
Storage Comment:	Aliquot and store at -20°C, with minimal freeze/thawing. A working aliquot may be refrigerated at 4°C for a few weeks and still remain viable.



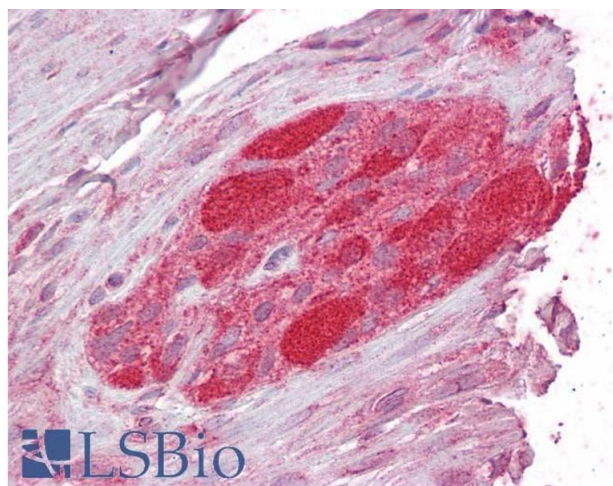
#### Immunohistochemistry

**Image 1.** (ABIN184697) Negative Control showing staining of paraffin embedded Human Kidney, with no primary antibody.



#### Western Blotting

**Image 2.** ABIN184697 staining (0.3µg/ml) of Human Muscle lysate (RIPA buffer, 35µg total protein per lane). Primary incubated for 1 hour. Detected by western blot using chemiluminescence.



#### Immunohistochemistry

**Image 3.** ABIN184697 (2.5µg/ml) staining of paraffin embedded Human Small Intestine. Steamed antigen retrieval with citrate buffer pH 6, AP-staining. This data is from a previous batch, not on sale.

Please check the [product details page](#) for more images. Overall 5 images are available for ABIN184697.